

# Dickinson

CENTER FOR SUSTAINABILITY  
EDUCATION



# Sustainability Manual

---

# Contents

Center For Sustainability Education (CSE) .....	3
Vision & Mission .....	3
Eco-Reps Program .....	4
Goals .....	4
Get Involved .....	5
How You Can Learn More About Sustainability at Dickinson .....	5
Connect With Us .....	6
Tips for Hosting Sustainability Events or Workshops .....	6
Event/Workshop Ideas .....	7
Climate Change Needs Behavior Change .....	8
Walking, Biking and Ridesharing .....	8
Waste Minimization at Dickinson .....	8
Purchase Consciously .....	9
Waste Diversion at Dickinson .....	9
Turn Off Lights & Unplug .....	10
How Do I Do That? .....	11
Effective Communication .....	11
Dickinson Definitions: FYI .....	12
Dickinson Sustainability Resources .....	13
Campus Offices/ Centers .....	13
Student Organizations Clubs .....	15
Signage .....	16
Reporting Concerns/Missing/Damages .....	16
Next Steps .....	17
Green Devil Certification .....	17
Green Living Guide .....	17
Green Event Checklist .....	18
Green Office Checklist .....	18
Contacts .....	19

*We hope this manual provides the information, tools and strategies for YOU to make positive changes for sustainability at Dickinson. This student produced publication can't include every facet of our ever-changing programs, but is aimed to help you learn where to start and how to connect to the resources, people, and projects critical to this work at Dickinson.*

---

## Center For Sustainability Education (CSE)

Dickinson chose to make sustainability a part of every student's education. [CSE](#) supports this educational mission by creating, enhancing and connecting opportunities for learning about, innovating for, and practicing sustainability in and beyond the classroom. CSE works with faculty members in all academic departments to infuse sustainability across Dickinson's liberal arts curriculum, providing resources to assist faculty. Additionally, in collaboration with a variety of partners, CSE also supports co-curricular activities that engage students and other members of the Dickinson community in exploring complex problems and creating, testing and evaluating sustainable solutions on campus, in Carlisle and in other communities. Working with a variety of partners, CSE brings speakers to campus, serves as an information hub for all facets of Dickinson's sustainability efforts, and mentors student interns, researchers, and volunteers to be agents of change working to create sustainable communities.

### CSE Vision & Mission

CSE wants every Dickinsonian to develop the knowledge, skills, and passions for helping create an inclusive and just world that is socially, economically, and ecologically sustainable. CSE engages Dickinsonians in learning about, innovating for and practicing sustainability in the classroom, on campus and in communities near and far.



---

## Eco-Reps Program



Eco-Reps are a network of leaders who work to empower others to make sustainable changes in their lives and in their communities through peer education, programming, and outreach.

Any Dickinsonian (student, faculty or staff) can commit to serving a community as an Eco-Rep. Communities can include residential spaces,

sports teams, places of work, offices, club/organizations or academic building. Through the support of CSE, Eco-Reps create educational engagement opportunities to advance sustainability at Dickinson. This is a great place to start. Volunteer your time, learn more and meet like-minded Dickinsonians to work with on creating action and change!

Join the team and apply online at [www.dickinson.edu/ecoreps](http://www.dickinson.edu/ecoreps)

### Goals:

- Help Dickinsonians gain a better understanding of sustainability at Dickinson and how to connect these opportunities to their lives.
- Create a more sustainable campus through peer education.
- Develop a peer education system/structure that allows Eco-Reps to learn, teach, and lead.
- Develop student, faculty, and staff leaders that can effectively educate others and be proactive agents of change.
- Make resources for promoting sustainability at Dickinson more accessible.
- Educate peers about how certain choices affect their environments, including natural resources, finances, and their communities.
- Empower constituents to make sustainable decisions through peer education and programming.

---

## Get Involved

Dickinson prepares sustainability leaders inside and outside of the classroom. Competencies and dispositions for creating a sustainable world are developed through knowing and doing: studying sustainability in the classroom and abroad, conducting research, advancing campus greening efforts, practicing sustainable living skills, working in internships, serving communities and using the campus as a living laboratory in which to act on ideas. We want students to be able to:

- Think critically about problems of improving the human condition equitably in this and future generations, while conserving environmental systems necessary to support healthy and vibrant societies.
- Solve problems by applying sustainability concepts and principles.
- Communicate effectively to raise awareness, increase understanding, and motivate action for sustainability.
- Collaborate with others, working with and leading teams or groups to advance shared sustainability goals.

## How You Can Learn More About Sustainability at Dickinson

- Attend sustainability events and workshops for current information and networking.
- Follow CSE on social media.
- Subscribe and read the bi-weekly student produced Sustainability E-Newsletter.
- Communicate with CSE interns, Eco-Reps or sustainability staff about your interests.
- Visit the Center for Sustainability Education and introduce yourself- Kaufman 190.
- Conduct research or apply classroom projects to Dickinson's sustainability efforts.
- Volunteer your time to help with a campus project like The Hive, The Handlebar or Free xChange to network with others and find out what matters most to you!
- Take sustainability courses across the curriculum.
- Pay attention to campus issues and get involved to make the changes you want to see.

## Connect With Us

### Like/Follow Us on Social Media:

- Facebook Page: @CSE.Dickinson
- Instagram: cse\_dickinson
- Twitter: CSE\_dickinson

### Sustainability E-Newsletter: [www.dickinson.edu/sustainabilitynews](http://www.dickinson.edu/sustainabilitynews)

Do you want to keep up with the latest sustainability news, events, and general announcements from across Dickinson College? [Sign up online](#) for the Sustainability E-newsletter student-produced publication that comes out every other week!

We are always accepting story ideas, nominations for sustainability spotlights (highlight students advancing sustainability at Dickinson), event information, or written pieces for the newsletter (<250 words). Please send these to [sustainability@dickinson.edu](mailto:sustainability@dickinson.edu).

## Tips for Hosting Sustainability Events or Workshops

Host or attend an educational event, project, or campaign events to provide an opportunity to talk face-to-face about issues and ideas. They also help to keep everyone accountable for their responsibilities and create a space for collaboration and teamwork. Events can take on many different forms to meet your goals, so be creative and inclusive as you build your ideas.

### **Here are tips to consider as you begin brainstorming.**

- Use the [Green Event Checklist](#) for any event you are planning. This can be found online and on [EngageD](#). This list will help you think through everything you need to do to make your event as sustainable as possible.
- Think about the goal of your event/workshop. Focus on things participants can do differently. [What change/action are you hoping participants make?](#) Provide education about how and why to change behaviors, campus systems or individual actions.
- [Network with others](#) to learn what is already being done and work with partners. Contact [CSE](#), [ALLARM](#), the [Farm](#), and many other organizations to connect!

## Event/Workshop Ideas

- **Encourage Biking:** Organize a group bike ride to explore the Carlisle community. Stop by and check out The Handlebar. Red Bikes are available for daily loan for those that don't have a bike. Pick them up at the Department of Public Safety (DPS).
- **Assess Behaviors with Green Devil Certification (GDC):** Gather a group to complete the online individual assessment together and have participants discuss areas of strengths, ways to increase sustainable behavior practices and campus barriers.
- **Host "Power Downs":** Get a group of students to head outside, power down their residential spaces, and discuss energy sources and conservation strategies while outdoors.
- **Create Action via Movie Night:** Show a film about an environmental issue and have a discussion before and or after about the issue and what Dickinsonians can do about it.
- **Promote Plant-Based Potluck:** Organize with a speaker about an environmental issue. Encourage them to use local, plant-based ingredients and bring their own dishware.
- **Build Sustainable Communities:** Collaborate with clubs or organizations and encourage sustainable food options and community action. Create inclusive spaces for sharing of ideas in focus groups to work on issues like wages, voter registration, or local policy.
- **Support Efforts for Diversity, Equity and Inclusion:** Upcycle items to support National Coming Out Month that demonstrate your pride and support of the LGBTQ+ community.
- **Promote Reuse:** Organize a clothing drive, make T-shirt tote bags or visit local thrift shops to discuss the benefits of upcycling, buying second hand and creating alternatives to online ordering.
- **Look for Action Ideas on a Sustainability Tour:** Organize a tour of a sustainability efforts or sustainable location on Dickinson's campus (Treehouse, Greenhouse, College Farm, The Hive, The Handlebar, Farmers Market, etc.).
- **Gather items for DsonMarket or U-Turn:** Clean out houses and spaces and donate or sell items using DsonMarket online marketplace platform. Have a yard sale with other apartments near you or donate unwanted items to U-turn at the end of the year.

---

## Climate Change Needs Behavior Change

*We strive to promote initiatives that create positive change for our planet and for all people. The following behavior-based programs are accessible to Dickinsonians and also have a direct impact on our carbon footprints now and in our lives after Dickinson.*

### Walking, Biking and Ridesharing

- Walk, don't drive to classes and athletic practices and games. It's good for the planet and your health!
- [The Green Bikes Program](#) free long-term bike share that allows Dickinsonians to borrow a bicycle, lock and helmet for a semester for a refundable \$25 cash deposit. Join the waiting list online at [www.dickinson.edu/biking](http://www.dickinson.edu/biking).
- [The Red Bikes Program](#) free daily bike share that allows Dickinsonians to borrow a bicycle, lock and helmet for the day. Visit the Department of Public Safety (DPS) dispatch window in Kaufman Hall with your Dickinson ID to pick up a bike.
- [The Safety Shuttle](#) is a FREE service that runs 7 days a week between 6:00 p.m. and 12:00 a.m. when classes are in session. The Safety Shuttle stops at Drayer Circle Drive, Adams/Witwer; Morgan Circle; Goodyear parking lot; McKenney Suites; Factory Apts.; Denny/Stuart; and Walmart.
- [Break Shuttle](#) Dickinson offers regular shuttles to the Harrisburg Airport, Amtrak, and Greyhound Bus station for \$10. Shuttle schedules are available on the Dickinson website.
- **D-Pool** Dickinson student programmers are working to build a custom rideshare platform only for Dickinsonians. More to come online soon!



## Waste Minimization at Dickinson

The best option. Waste minimization reduces the amount of generated waste. The following projects and programs help us produce less waste as a community. Order less, ship less,

- **Reduce Food Waste:** The choice is yours! Pick your portions and eat what you take! Compost is still waste so do your part to take what you need and minimize food waste.
- **EcoTainers:** Dickinson's Dining services provides EcoTainers to the campus community that are aimed at minimizing waste, water and energy consumption while providing convenient and cost-effective To-Go options for Dickinsonians.
- **Bring your Own:** Please carry your own water bottles, cups, utensils and tote bags so that single use disposable items are not needed any longer on campus.

## Purchase Consciously

- **Dson Market:** This is our online community platform designed to safely support the buying, selling and trading of goods and services by Dickinson students, faculty and staff. The program aims to create a safe, inclusive online marketplace where you can save/make money, reduce carbon emissions and interact with others in support of sustainability at Dickinson. [www.dickinson.edu/dsonmarket](http://www.dickinson.edu/dsonmarket)
- **The Free xChange:** On campus free store that aims to 1) reduce waste and promote reuse, 2) provide a safe, equitable and accessible space for the exchange of second-hand clothing, accessories and textbooks to every Dickinsonian and 3) create awareness of the social, economic, and environmental impacts of consumerism. Don't buy new! Visit Free xChange.

## Waste Diversion at Dickinson

Waste diversion is a method of redirecting waste from landfills. Campus signage is available to assist you in knowing what materials should be going to the landfill, recycled, or composted. The systems are dynamic and it's important to stay informed and ask questions.

**Plastic Bag Recycling:** Plastic bags collected on our campus are taken to Giant Foods and turned into lumber through the Bags to Benches program! These can't go in single stream recycling.

1. Save, reuse and then recycle all plastic bags and film. Plastic bag collection bins are in the HUB and near the mailroom.
2. Establish a plastic bag recycling collection bin if not already present near you.
3. Take the collected bags to CSE in Kaufman 190 or to local grocery stores as able.

**E-Waste:** Electronics should NOT go into single stream recycling bins.

1. Save and recycle all personal and college-owned e-waste and batteries. The collection bins are in the HUB near the old mailboxes. The list of acceptable items are [online here](#).

**Composting:** Compost bins can be borrowed for the semester from CSE for any Dickinsonians willing to care for it. Four central campus locations have been established for you to dump the bins. Those are then collected and taken to the College Farm. If you would like to borrow a bin, you must come to CSE, Kaufman 190 to sign-out a bin.

1. Bins need to be emptied, cleaned and managed on a weekly basis. No meat/dairy.
2. Signage is provided when bins are signed out.
3. Bins must be returned at the end of each semester.

**U-Turn/Green Move Out:** At the end of each year, United Way of Carlisle and Cumberland County, hosts a large community sale of donated items. In 2024, the sale raised about \$25,000! Bins are placed around campus for students and staff to donate items that they no longer need for resale.

## Turn off Lights & Unplug

It is our responsibility to turn off lights and electronics when they are not being used by others. Yes, Dickinson has many motion sensor lights, but you can still save energy by turning them off on your way out. Air conditioners or heaters should managed appropriately, and issues reported immediately.

---

## How Do I Do That?

### Effective Communication and Outreach:

#### Focus on changing behavior, not just sharing info

- **Target Your Audience (Use Emotional Appeals):** Ask yourself, what motivates this person or group? If you don't know, try to find out. Your audience will respond better to messages that speak to their values. You will have to balance emotional and fiscal arguments to reach your entire community. How can you leverage the power of pride and provoke surprise to create emotional appeals to connect with your audience? Be flexible and genuine! Don't assume a tactic that worked for one person will work for everyone.
- **Connect with Your Audience (Use Social Incentives):** Your audience will be more willing to listen to people they know and trust. When talking with them, try to stress shared interests and community standards. If you do not know the person you are talking to, try emphasizing your shared experience as a Dickinsonian. Work to strengthen group identity and establish and clarify norms. How can you make your work more visible and make others see the value?
- **Allow Your Audience to Arrive at Their Own Conclusions:** Instead of telling them what changes they should make, guide them to arrive at their own conclusions. Give your audience enough information in order for them to make their own informed decisions. Once they take ownership of an issue, they will be more likely to carry out new behaviors.
- **Your Audience Plan Their Goals (Create Choice Architecture):** While defining goals for your audience, remember to outline how these goals will be implemented, and identify what barriers might exist. Plan ahead and involve stakeholders from the beginning, not at the end!
  - Build on existing beliefs
  - Make choices clear and simple
  - Reduce barriers and hassle factors.

- **Things to Avoid:** Do not overload your audience with apocalyptic messages. Make sure your message includes a balance of the issues and possible solutions; otherwise, you will leave your audience feeling helpless. Make them feel like their actions will have a positive impact! Do not present unsustainable behaviors as normal behavior. Help those interested in sustainability see that a sustainable lifestyle is simply part of being a Dickinsonian, being a productive citizen.
- 

## Dickinson Definitions: FYI

**Climate Action Plan:** The Climate Action Plan (CAP) facilitates Dickinson's commitment for carbon neutrality. Established in 2008 by students, faculty, staff, and administrators, the plan outlines our path to reduce Dickinson's carbon emissions by 25% and purchase offsets for the remaining 75% for 2020 with more goals for 2025 and 2030. The plan includes measures to increase use of renewable energy, improve energy efficiency, and improve conservation efforts.

**EcoTainer:** Reusable to-go container provided by Dickinson's Dining Service to minimize waste. The program works on an opt-in, one-time fee (\$7.00) basis where participants possess either an EcoTainer or an equivalent token. Joining the program will give you one soup and one entrée container. Dirty EcoTainers can be exchanged for tokens and tokens can be redeemed for clean.

**E-Waste:** Also known as electronic waste. A recycle stream collected in bins on the lower level of the HUB near Bookstore. Acceptable materials include light bulbs, batteries, wires, cable, cords, charges, mobile devices, laptops, CDs, etc. These should not be disposed of in landfill!

**Expo:** The biggest sustainability-related event of the year!

**Green Devil:** Dickinson's sustainability-focused mascot. You'll see the Green Devil at many Dickinson events across campus.

**Sustainability Connections (SCON):** Courses that fulfill the sustainability graduation requirement. touch on sustainability. Sustainability is a visible and explicit part of SCON courses, but sustainability typically is not a major focus. While students will be made aware of multiple dimensions of sustainability, it is not necessary or expected that SCON courses will

address more than one dimension in depth. You can search for these courses under the “Attribute Type” section in the course catalog and course schedule search.

[Sustainability Investigations \(SINV\)](#): Courses that fulfill the sustainability graduation requirement. touch on sustainability. SINV courses engage students in deep and focused exploration of sustainability and its multiple dimensions as a major theme of the course. You can search for these courses under the “Attribute Type” section in the course catalog and course schedule search.

---

## Dickinson Sustainability Resources

Dickinson’s sustainability-focused offices and clubs are great partners for collaboration to better promote sustainability goals and further inspire change in campus culture. Check them out.

### Campus Offices/Centers

[Alliance for Aquatic Resource Monitoring \(ALLARM\)](#): ALLARM is an organization that provides technical assistance to watershed groups, K-12 environmental education, and public education and outreach. Rather than monitoring streams throughout the state, ALLARM teaches local watershed groups how to monitor their streams and performs quality assurance tests to confirm the local groups’ results. ALLARM also monitors our local LeTort Spring Run, which travels directly through Carlisle.



[Center for Sustainability Education \(CSE\)](#): CSE is an organization that creates opportunities to learn about sustainability both inside and outside of the classroom. Working with many partners, CSE serves as a hub of Dickinson’s sustainability efforts, funds student-faculty research, helps faculty incorporate sustainability into their teaching, and hosts speakers, events, and workshops. CSE interns work on projects including Dickinson’s biking programs, analyzing sustainability data, coordinating the Eco-Reps program, The Hive, The Handlebar, Free xChange and more.

- [The Free xChange](#): On campus free reuse store for the exchange of clothing and accessories. Located in the lower level of the HUB, open 24/7.

- [The Handlebar](#): Dickinsonians learn to fix and build bikes. The cooperative is run by student and staff volunteers and CSE interns. Located in the lowest level of Davidson-Wilson Residential Hall, accessible from D-Walk.
- [The Hive](#): Engages students, staff, and faculty in learning about sustainability problems and solutions through the direct experience of beekeeping, honey production and community building. Members of The Hive advocate for pollinator-friendly policies, build and improve native bee habitats on and off campus, and participate in educational programs on the significance of pollinators and the challenges facing them. Our active beehives are located to the right of Rector Hall by the train tracks. Working groups include 1) Beekeeping 2) Honey Harvesting 3) Value-Added Products 4) Pollinators and Habitat.

[Dickinson College Organic Farm](#): A 60-acre working farm and a living laboratory where students can gain distinctive, hands-on learning experiences. The farm offers opportunities for vegetable production, Farm Works, animal care, biogas production and other sustainability projects. Volunteers wanted. Email the farm coordinator to set up your own service day. Contact [farmcoordinator@dickinson.edu](mailto:farmcoordinator@dickinson.edu) to set up your own service day.



[EcoLeague](#): A consortium of six liberal arts schools dedicated to environmental stewardship, social change, and educating students to build a sustainable future. EcoLeague schools offer semester exchange programs allowing students of one school to study at another, giving them access to ecosystems, faculty, and unique place-based experiences.



[The Office of Equity & Inclusivity \(OEI\)](#): Builds and strengthens campus awareness on how various forms of oppression impact communities and empowers Dickinsonians by providing tools to combat multiple forms of injustice and inequity. OEI creates educational and cocurricular experiences to build capacity and skills, develops programs focused on domestic and global issues, and provides community-building opportunities. OEI operates through an intersectional lens which recognizes that ability, class, ethnicity, gender, race, religion, sexuality, and other social identities always overlap.

- [Access and Disability Services](#)
- [Asbell Center for Jewish Life](#)
- [Center for Spirituality & Social Justice \(CSSJ\)](#)
- [Office of LGBTQ Services](#)
- [Popel Shaw Center for Race & Ethnicity](#)
- [Women's & Gender Resource Center \(WGRC\)](#)

## Student Organizations: Clubs

Here lists some of the active sustainability related clubs on campus. This list is dynamic.

- **Eating Ethics Collective (EEC)**: EEC aims to take an intersectional approach as we provide an open forum for conversation about food and eating ethics. We welcome diverse perspectives to deepen our understanding of challenges and possibilities within our food system. [ethicaleatingclub@dickinson.edu](mailto:ethicaleatingclub@dickinson.edu).
- **Outing Club**: The club is a resource for the entire Dickinson community to explore the natural world around campus ranging from hiking and camping to climbing and skiing. The outing club's gear is available for loan through "The Gear Box", a place for equipment loan to Dickinson students, faculty or staff. There is a one-time fee of \$10 to borrow the equipment. For more information, contact: [outingclub@dickinson.edu](mailto:outingclub@dickinson.edu)
- **Tree Club**: Provides students the opportunity to discuss and explore environmental issues and their intersectionality with other relevant social and economic justice issues. Through experiential learning and facilitated dialogues this group helps empower students to become environmental advocates. The club supports student-led projects related to sustainability. For more information, contact: [dsontreeclub@dickinson.edu](mailto:dsontreeclub@dickinson.edu).
- **The Workers Party**: We as students are in a unique position that allows us to act as agents of change at this institution. This is not just a problem for workers, this is a Dickinson

problem, and the Workers Party is dedicated to fixing it. Our activities will generally be geared towards community outreach, volunteer work, fundraising, and more. All are more than welcome to join; the group has no formal leadership, but members are encouraged to take initiative and contribute if they are able. Dickinson doesn't work without you! For more information, contact: [dsonworkersparty@gmail.com](mailto:dsonworkersparty@gmail.com).

## Signage

- To order, please email [sustainability@dickinson.edu](mailto:sustainability@dickinson.edu) indicating size and quantity.
- The poster can be picked up at CSE, Kaufman 190.



## Reporting Concern and Leaks: Fix Inefficiencies

Facilities can provide waste bins, repair leaks, broken washers/dryers/refrigerators etc.

- Let them know the issues and problems! Especially in residential spaces
- Go to the [Facilities icon](#) on the Dickinson Gateway webpage.
- First time users need to register in SchoolDude with your Dickinson email. Click on “Register Here” and fill out the required fields.
- Login with your Dickinson email and password.
- If the problem is urgent, be sure to describe the problem as such
- **STEP 5 PASSWORD IS: “password”**
- Press submit and you should receive a confirmation e-mail. Follow up as needed.



# Next Steps for Action

## Green Devil Certification (GDC)



Dickinson

The [GDC program](#) is an educational self-assessment tool that helps empower all Dickinsonians to engage the world sustainably by thinking critically, reflecting on everyday choices, and advocating for change. Becoming certified will help identify an individual's opportunities to live more sustainably while fostering positive change in our communities by educating Dickinsonians on sustainable practices, actions, and attitudes. The program is open to students, faculty, and staff of Dickinson College. Once Dickinsonians understand where they are beginning, you can show them how they can take the steps to start living a healthier lifestyle.

Get certified now online by completing the self assessment at [www.dickinson.edu/greendevil](http://www.dickinson.edu/greendevil)

## Green Living Guide

The [Green Living Guide](#) at Dickinson can help you make a few small changes to your routine which can make a big difference for your environmental impact. Do your part and share with others.

**Dickinson Green Living Guide**

Check out these easy to follow tips so you can make a big contribution to sustainability at Dickinson!

- Bring Your Own**
  - Use reusable dishes
  - Carry a water bottle
  - Buy an Eco-Tainer
  - Bring your own coffee cup
  - Pack food in tupperware
- Cut the Cord**
  - Use natural light
  - Dress for the season
  - Share appliances
  - Use power strips
  - Power down
- Watch your Waste**
  - Take only what you can eat
  - Compost waste
  - Take reusable bags with you
  - Buy in bulk
  - Upcycle and donate
- Recycle your Rubbish**
  - Recycle plastic bags
  - Bring cardboard to the HUB
  - Recycle batteries in the HUB
  - Talk to Eco-Reps
  - Encourage and educate

**Laundry**  
Reduce your carbon footprint

- Only wash full loads
- Wash clothes with cold water
- Air dry clothes
- Use eco-friendly detergent

**Bathroom**  
Shower Smarter!  
Keep showers limited to less than 5 minutes

- Turn Off the Faucet  
While brushing teeth, washing hands, etc.
- Submit Work Orders  
Send a work order if you notice a leaky faucet or if any appliance is not working properly.

**Educate**

- Monitor carbon footprint with energy dashboard
- Take a sustainability class
- Become an Eco-Rep
- Attend CSE sponsored events
- Volunteer

**Eat Green**

- Eat local
- Go to the Farmer's Market
- Eat from campus edible gardens
- Learn the source of your food

**Less is More**

- Upcycle reusable materials
- Donate to Dickinson U-Turn
- Swap clothing with Dickinson Free x Change
- Buy used textbooks
- Shop at second hand stores

**Get Outside**

- Take a walk
- Sit on Morgan Field/KW Lawn
- Bike
- Take the campus shuttle
- Carpool with friends
- Zip Car to the mountains

**Buy Green**

- Buy a plant
- Choose environmentally conscious products
- Reduce animal products in your diet
- Invest in reusable products

**Stay Connected**

- Facebook: @CSE.Dickinson
- Instagram: cse\_dickinson
- Twitter: CSE\_dickinson

**Dickinson**  
CENTER FOR SUSTAINABILITY EDUCATION

## Green Events Checklist

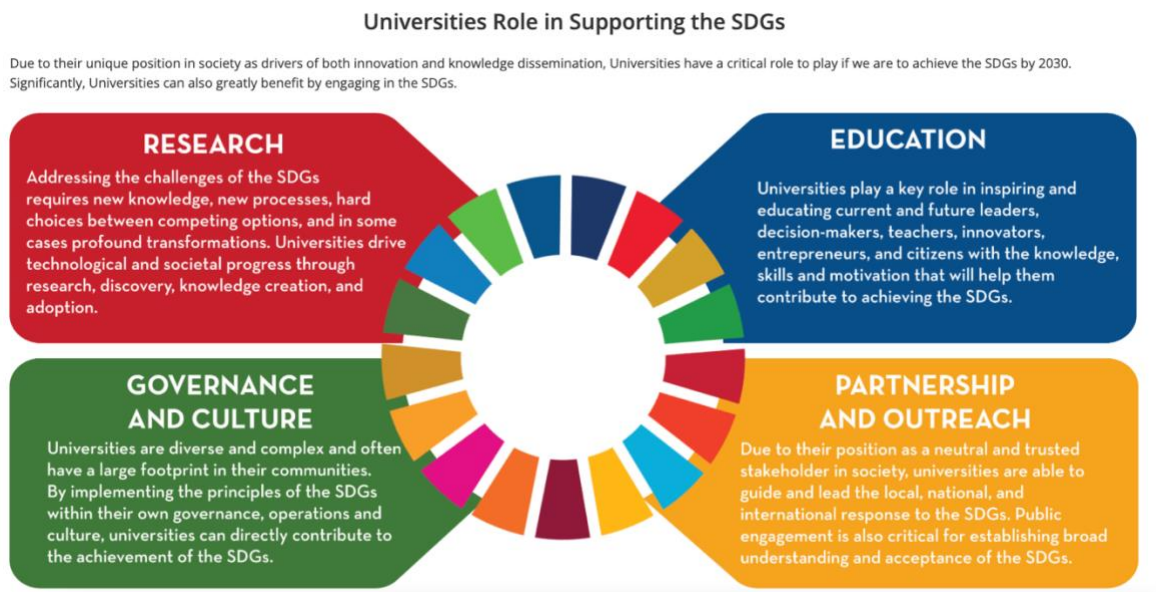
The [Green Event Checklist](#) helps make events more sustainable and helps you consider the environmental and social impacts of various aspects of event programming on campus. This checklist will help event organizers to explore and practice Dickinson values including sustainability, leadership, ethical reasoning, and inclusivity.

## Green Office Checklist

The [Green Office Checklist](#) will help the office to identify the dimensions of sustainability in the office spaces and departmental operations. Our hope is that by evaluating these actions, behaviors may change to increase sustainability at Dickinson.

Contact [sustainability@dickinson.edu](mailto:sustainability@dickinson.edu) for more information on how to use this checklist or to schedule an audit. The scores are to help assess your community's improvement over time.

Learn more.... Working towards the UN Sustainable Development Goals is part of every Dickinsonians commitment to this place. Visit [www.dickinson.edu/sustainability](http://www.dickinson.edu/sustainability).



Graphic Borrowed from: <https://sdg.umn.edu/about>

---

## Contacts

The Center for Sustainability Education  
Kaufman Hall 190

### Staff:

Neil Leary, Director

[learyn@dickinson.edu](mailto:learyn@dickinson.edu)

717-245-1954, Kaufman 195

Lindsey Lyons, Director of Sustainability Learning

[lyonsli@dickinson.edu](mailto:lyonsli@dickinson.edu)

717-245-1117, Kaufman 194

Sumaiya Quayum, Administrative Assistant

[quayums@dickinson.edu](mailto:quayums@dickinson.edu)

717-245-1781, Kaufman 190

### Student Interns:

To contact one of our interns, email: [sustainability@dickinson.edu](mailto:sustainability@dickinson.edu).

The Biking Intern: [biking@dickinson.edu](mailto:biking@dickinson.edu).

The Hive Intern: [thehive@dickinson.edu](mailto:thehive@dickinson.edu).

