

50 Years of Geology at Dickinson College



Althouse



James



Tome



Kaufman

Early Years (from Sellers, 1973)

1811--Thomas Cooper included Geology in Natural Philosophy.

1830--Henry Darwin Rogers taught briefly, but was let go by the Trustees for teaching using what we today might call the “inquiry method” rather than memorization. He later published first Geology of Pennsylvania in 1852.

1840--Geology offered to Freshmen and Seniors.

1930--Geology apparently not taught after John F. Mohler died.

1946-54--Col. John R. Embick first Professor of Geology (and Chemistry)--seven Courses offered by 1947.

1954-66--Winthrop C. Difford

1957-1991--William W. Vernon--Geology and Chemistry

1957--Geology major approved.

Faculty Meeting, December 9, 1957

Present:
Bill Vernon



Absent:
Win Difford

From the desk of
Winthrop C. Difford
Special Agent

3509 North Front Street
P. O. Box 89
Harrisburg, Pa.
Phone 4-7028

We made it!

27 to 22

Geology Major
9 Dec. 1957
Special Faculty Meeting

What's
this?

In 1958-59 the following courses were listed in the Catalog:

Physical Geology
Historical Geology
Mineralogy
Petrology
Introductory Paleontology
Stratigraphy
Economic Geology: non-metals
Economic Geology: metals
Structural Geology
Sedimentology
Geomorphology
Field Geology
Geochemistry
Engineering Geology
Seminary in Geology
Honors Course

All this with a two-person department!

1960's-Events

Win Difford leaves 1966

Bill Vernon becomes Dept Chair

Tom Mentzer--1965-1969

Henry Hanson arrives 1966

First XRD 1967

First overseas trip, Iceland, 1969

Noel Potter arrives 1969

Man Studies New Machine

Prof. William W. Vernon, chairman of the geology department at Dickinson College, examines a new piece of X-ray diffraction equipment. The apparatus provides a method of analyzing solid materials, such as pulverized minerals, by using reflection of x-rays from crystalline substances. A finely ground mineral mounted on "powder" camera gives a film pattern which identifies the mineral and supplies information on its composition and structure. The apparatus, purchased through a \$7,500 National Science Foundation grant, was put into use last week at the college.



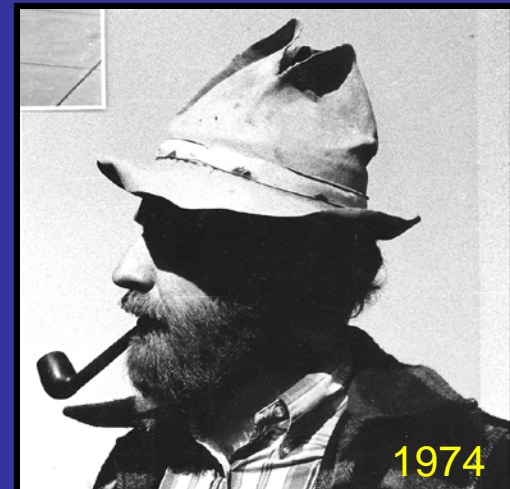
1967



1970

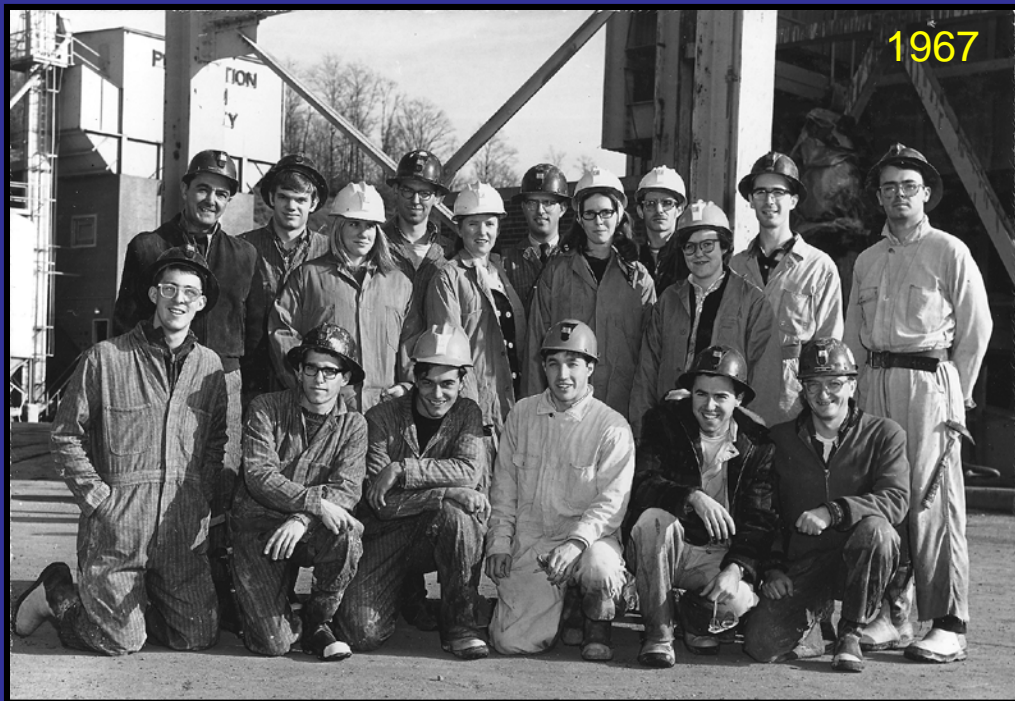


1973



1974

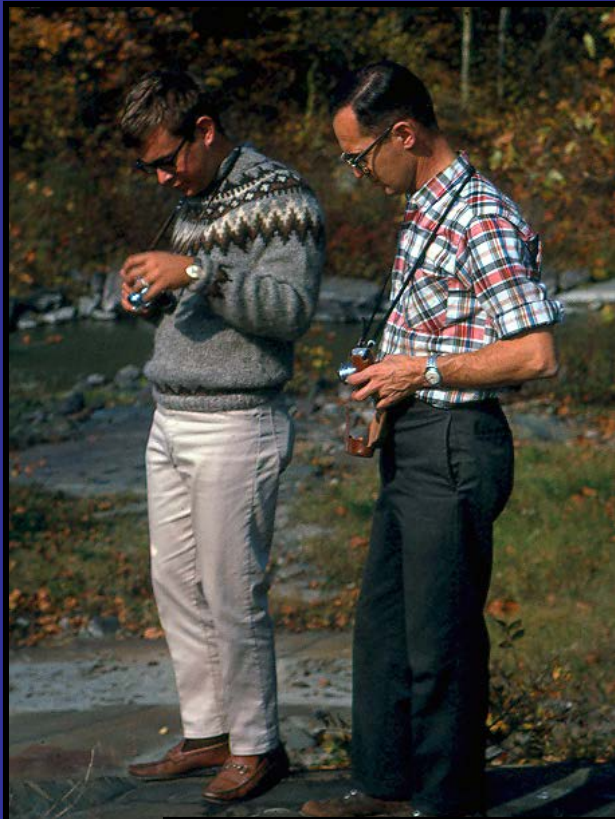
1960's-Students, Trips



1960's-Students, Trips



1960's-Students, Trips



1969



1969



1969



1969

1970's-Events

First Dept Vehicle, 1972

Agnes Flood, 1972

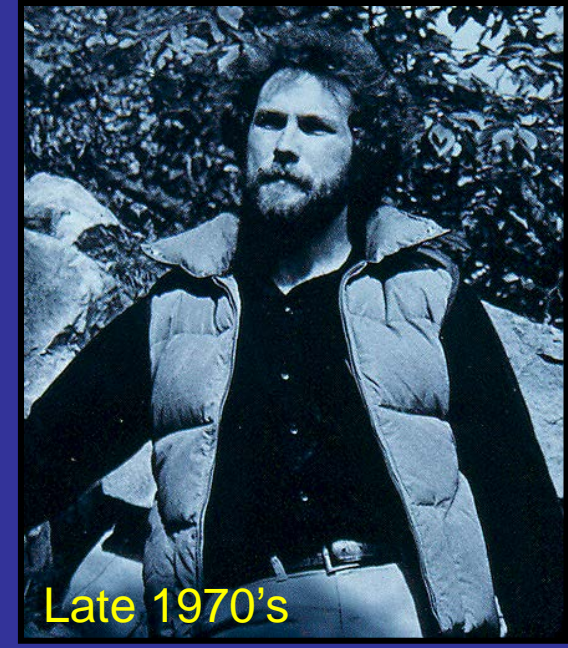
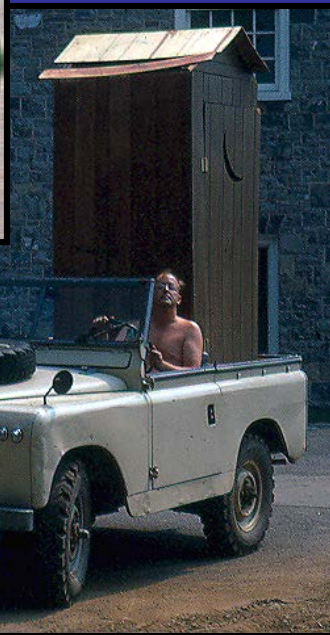
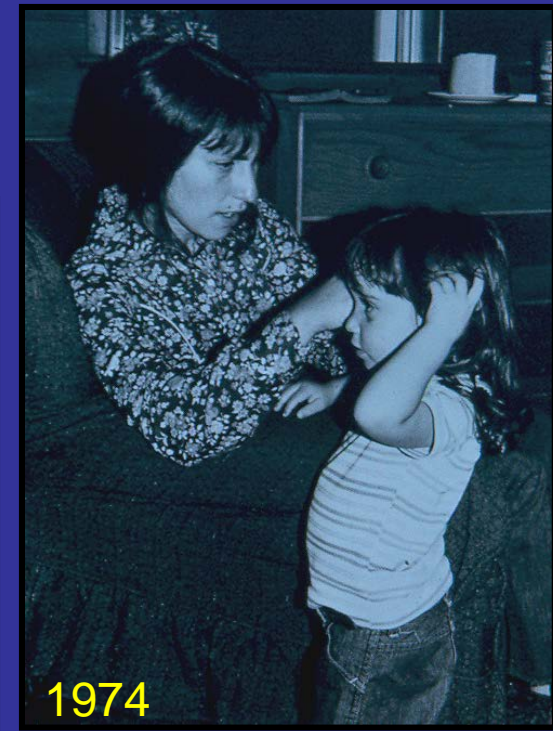
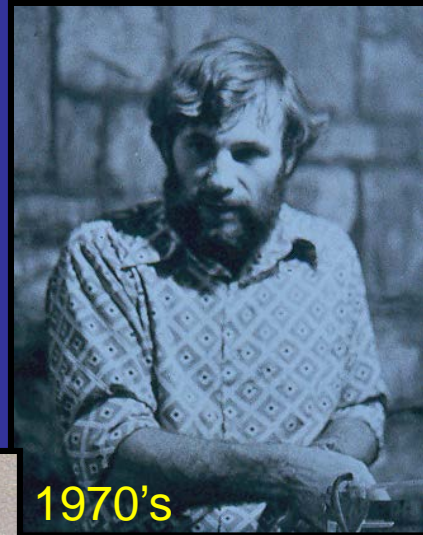
Candie Wilderman arrives 1974

Jeff Niemitz arrives 1977

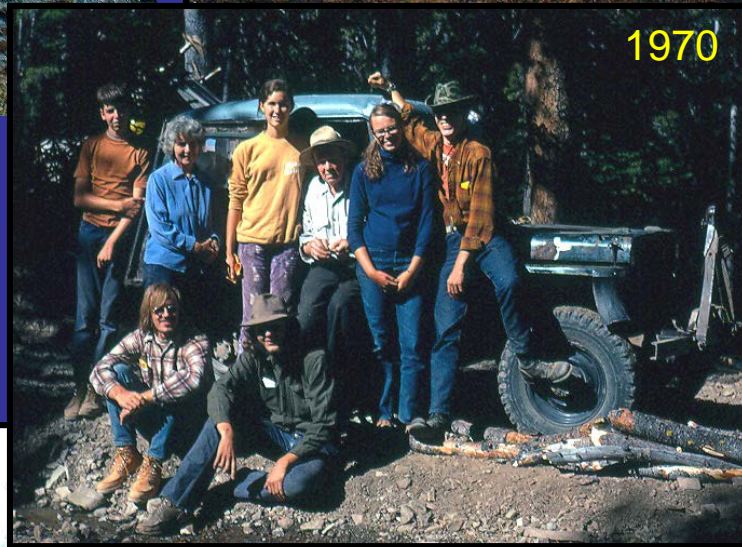
More extended trips--Alaska,
Wyoming, Florida

Various short-term faculty:

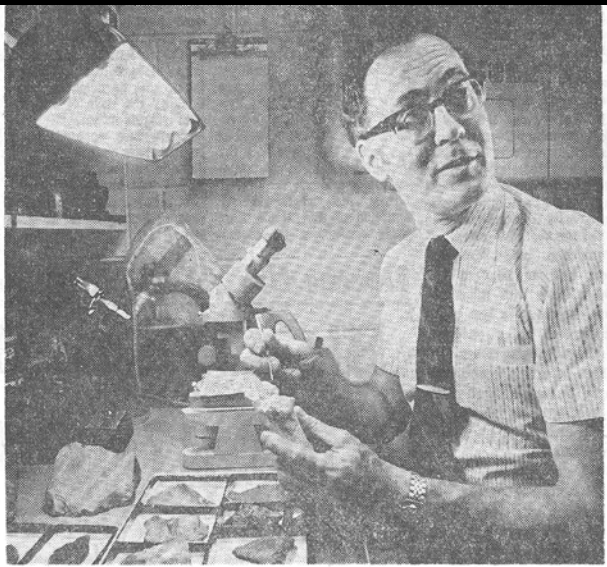
Pete Robelen, Ken Wolgemuth,
Rob Graham, Lisa Rossbacher,
Betty Barnes, Peter Kimmel



1970's-Students, Trips



1970's-People, Events



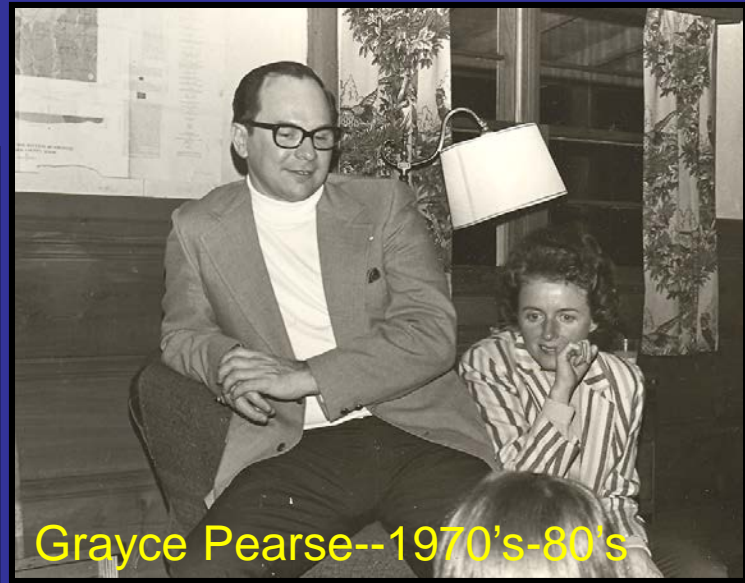
—Sunday Patriot-News Photo

Bones Provide Key to Early Man
 Prof. William W. Vernon examines a bone in laboratory at Dickinson College. Vernon, head of the school's geology department, will lead an archeological dig this summer in New York State, where he will look for clues to the date of man's first appearance in North America.

Hunt 'Old World' Artifacts *Patriot*
6/2/74
4 From Dickinson
Will Dig for Bones



1974



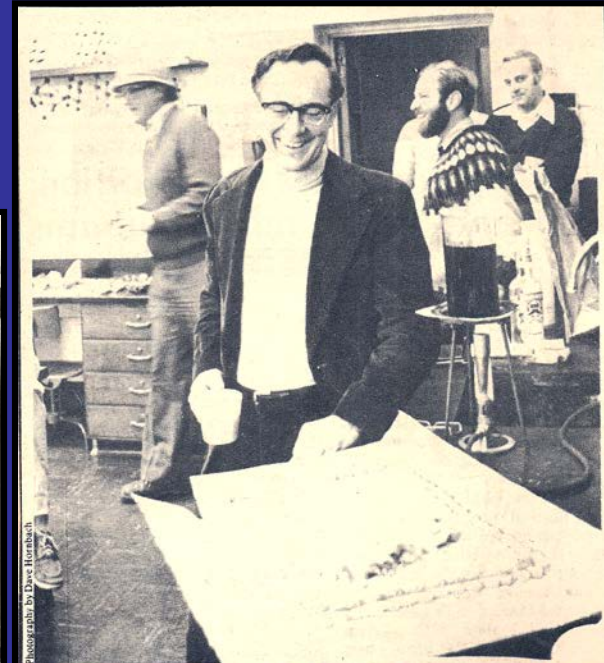
Grayce Pearse--1970's-80's



1976



1974



Photograph by Dave Hornbush

The Geology department celebrated its 20th birthday on Wednesday. Professor William Vernon, shown above, was responsible for the faculty approval of the major and is the only remaining member of the original two-man staff. The College has graduated 115 majors since the department was founded.

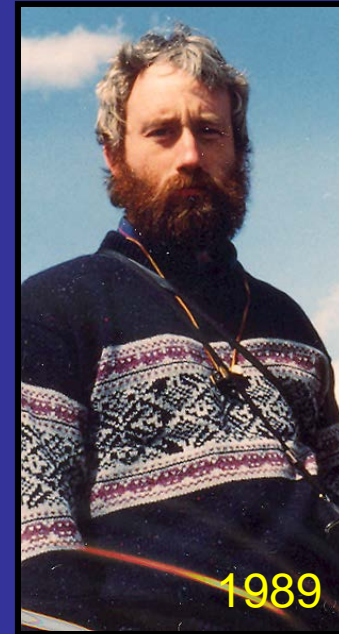
1970's-Students, Trips



1980's-Events

Betty Barnes dies 1983
Move Althouse to James 1986
40 people to Iceland over mid-term pause in 1986
Marcus Key arrives 1989
Norwich Science Program begins 1989

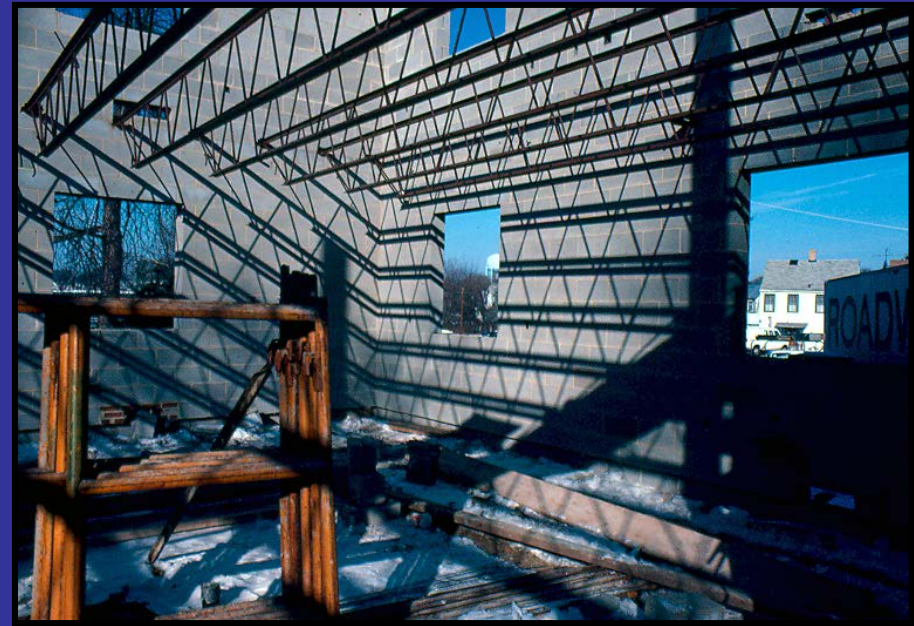
Various short-term faculty:
Liz Gordon, Frank Dudas,
Paul Strother, Cecilia Lenk,
James Ebert, Bob Blodgett,



1986-The (first) Move--Goodbye Althouse & HUB Basement



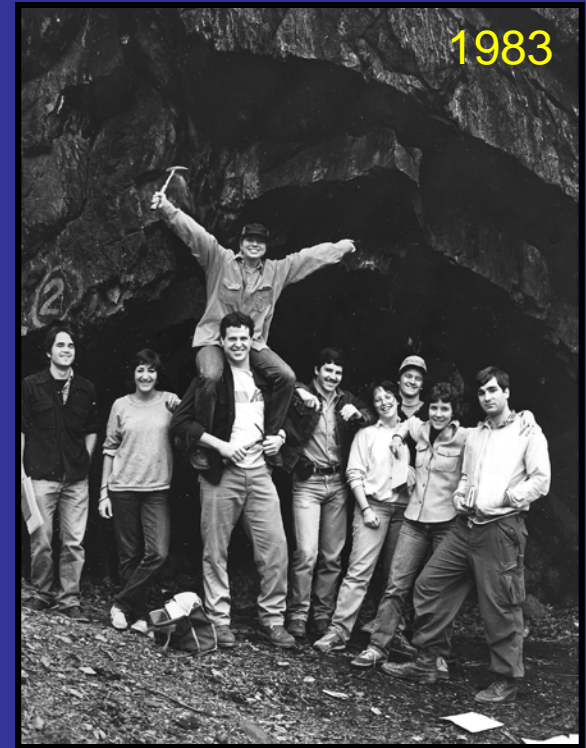
1986-The (first) Move--Hello James Center



1980's-Students, Trips, Museum



1980



1983



1980



1989

1980's-Students, Trips



1986



1989



1986



1986

1990's-Events

Bill Vernon retires 1991
Henry Hanson dies 1994
Gene Yogodzinski arrives 1995
Well field established 1995
Cassa Field Trip Endowment established 1997.
XRF acquired 1998
Old Physical/Historical OUT, Topical Intro. courses IN, 1999
"Global Ed" starts to affect where extended field trips go (farther).



Various short-term faculty:
Gale Blackmer, Jen Elick



Bill Smith/The Sentinels
Jeff Niemitz, left and Marcus Key have put yellow flags near well sites.

1990's-Events



1990's-Events



1997--Our 40th Anniversary

1990's-Field Trips



1993



1995



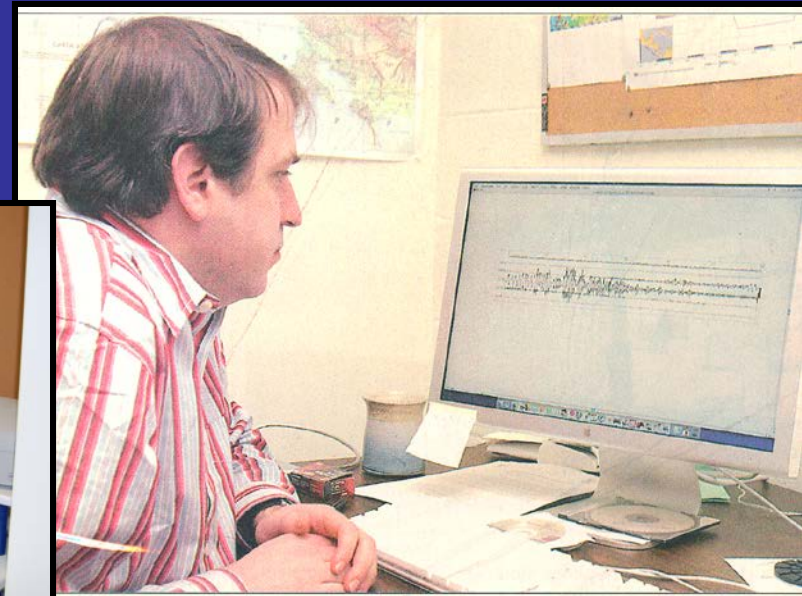
1993



1995

2000's-Events

SEM acquired 2000
Gene Yogodzinski leaves in 2001
George Lee gifts to Dept.
Ben Edwards arrives in 2002
Pete Sak arrives 2005
Move from James to Kaufman in
2006
2004-06-08-10--Succession of
Geology faculty at Norwich
Science Program
2007--Official birthday of Dept.
Various short-term faculty:
Jennifer Elick, Martin Helmke,
Beth O'Shea, Meaghen Pollock



Wally Shank/The Sentinel
Dickinson College professor Peter Sak looks at a chart from the time of the earthquake that caused the tsunamis.

2000's-Cassa Field Trips



Yellowstone and Glacier Parks, 2002



2000's-Cassa Field Trips

Hawaii, 2004



England and Scotland, 2006

2000's-Other Field Trips

Galapagos, 2003--actually Quito



Heimaey, Iceland, 2005

2006-The (second) Move--Goodbye James Center



Photo courtesy of College Relations

2006-The (second) Move--Hello Kaufman Hall,
the former Reeves-Hoffman Crystal Plant



2006-Hello Kaufman Hall



2008--The Department Today



It seems in good hands. Wish them well for the future!