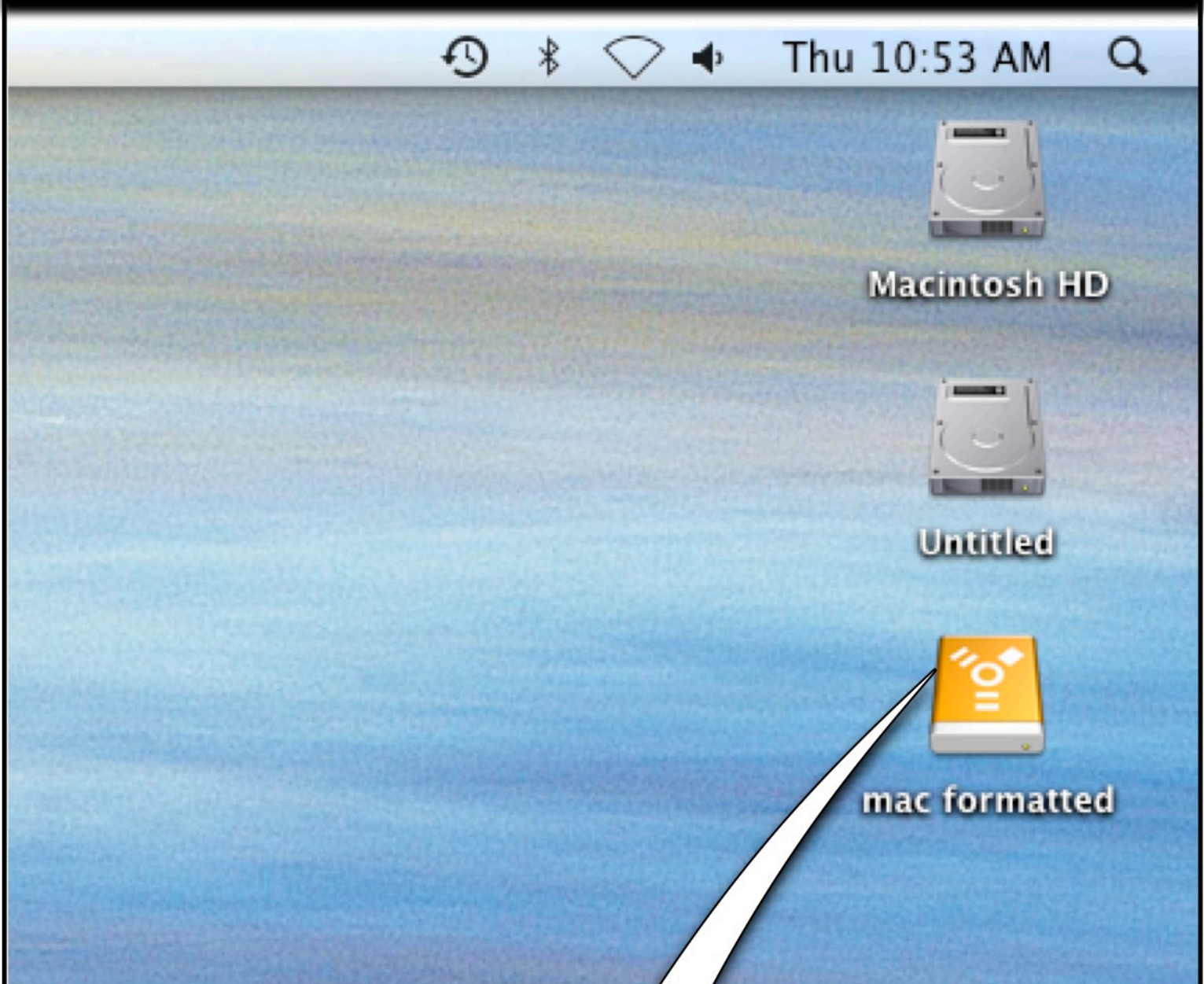


HOW TO FORMAT

AN

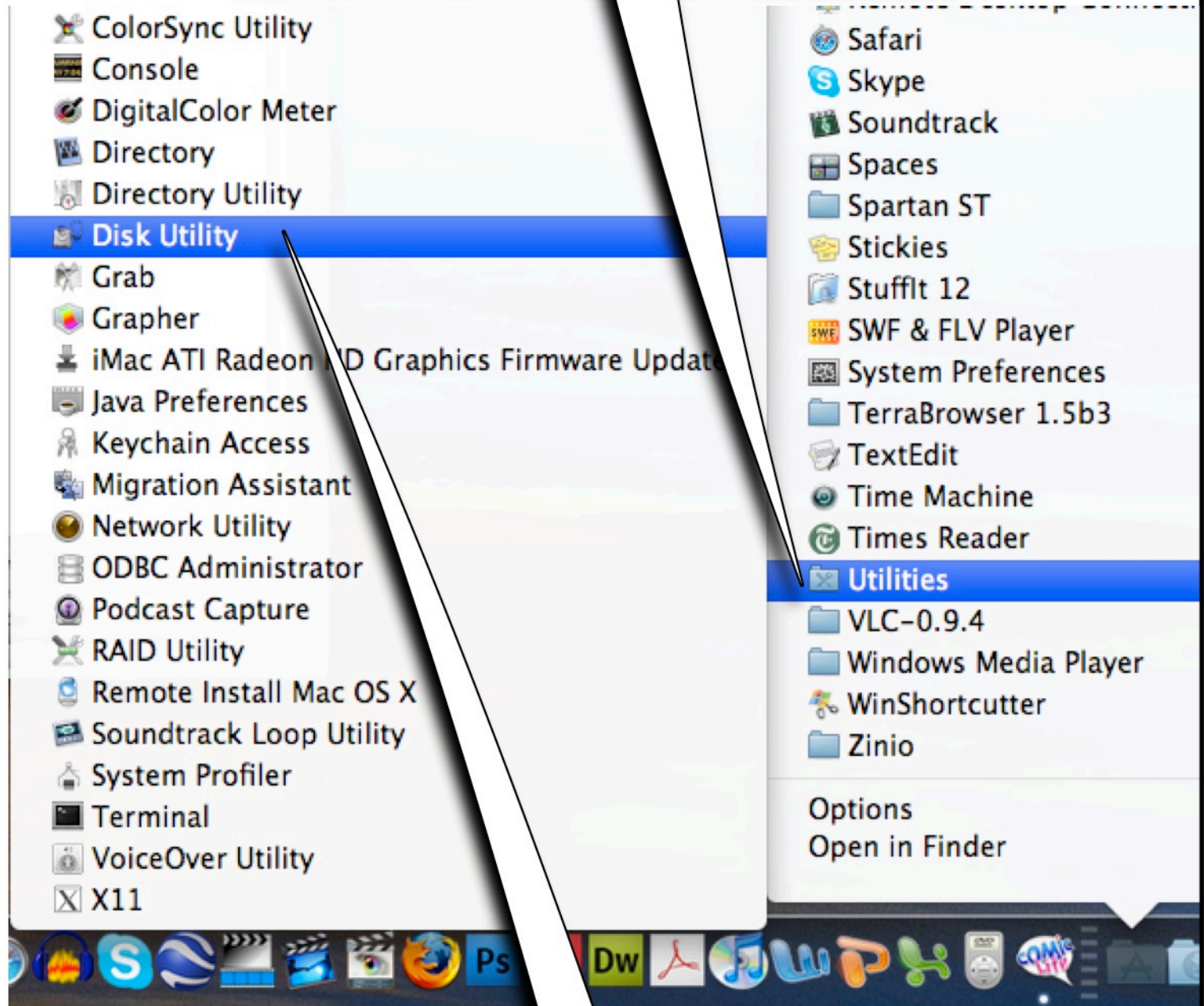
EXTERNAL HARD DRIVE

1. Connect the hard drive to a computer



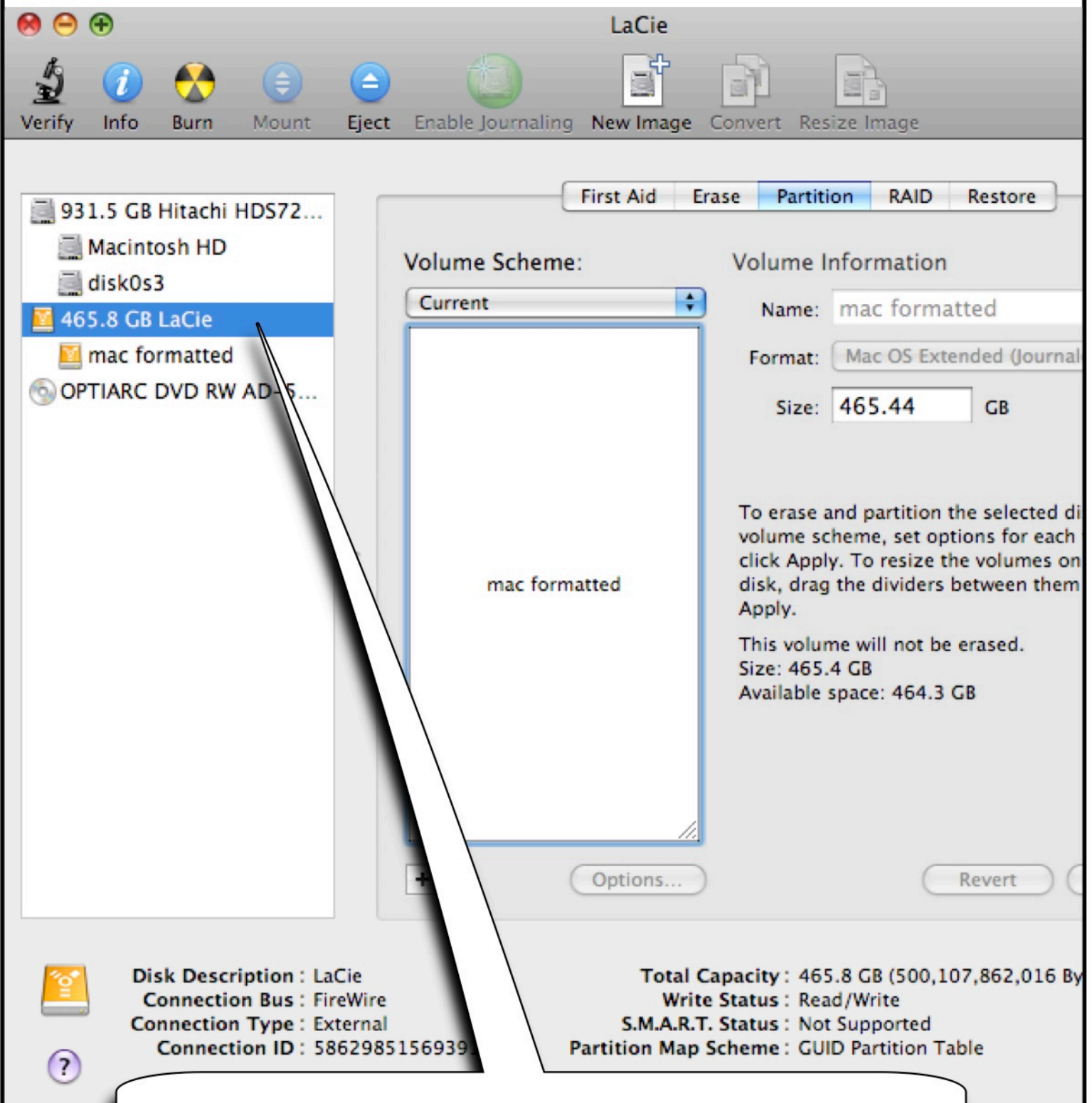
2. The hard drive will appear on the screen.

3. Go to applications and select "Utilities" from the list.



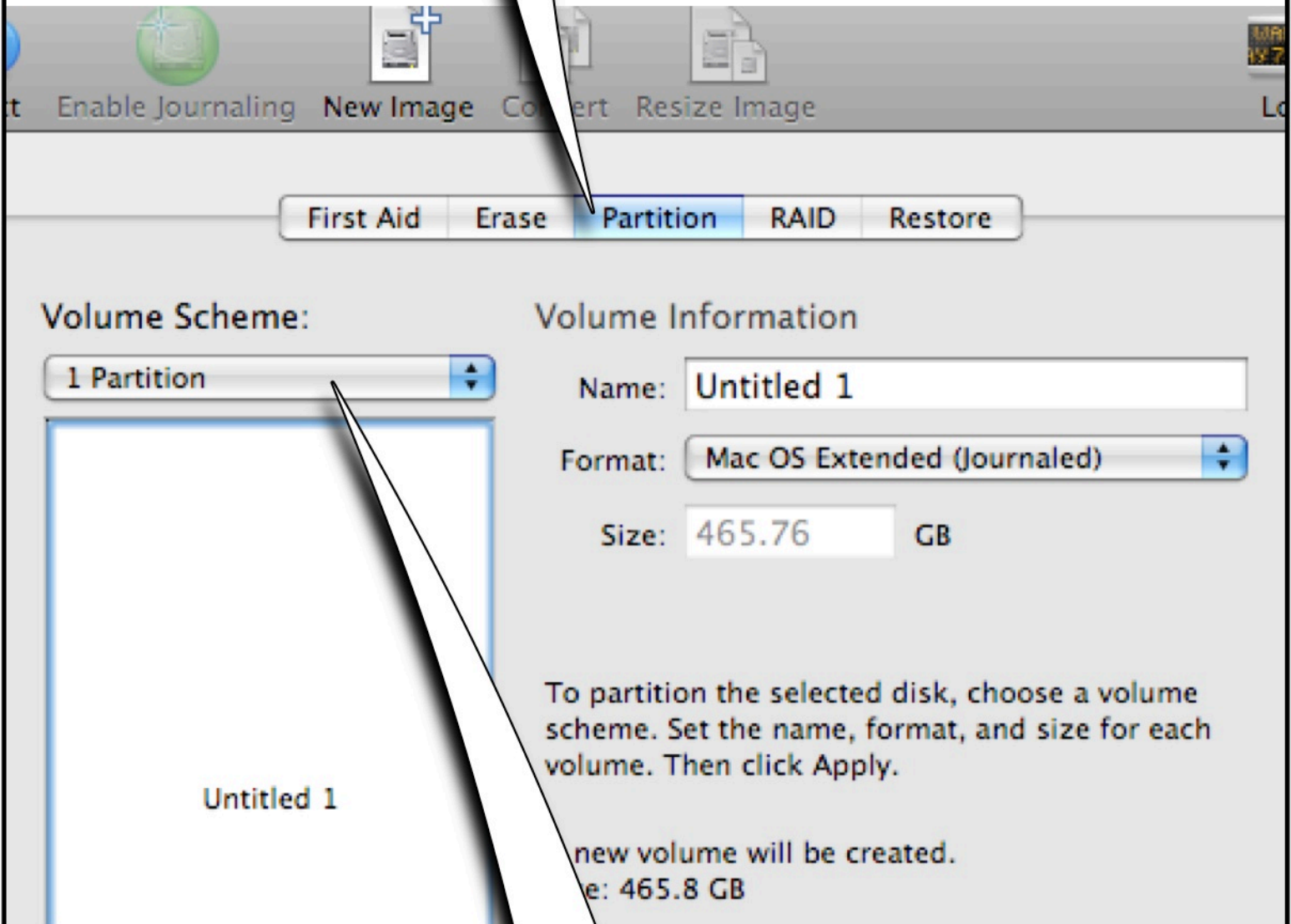
4. Select "Disk Utility" from the side menu.

5. An application window will pop up.



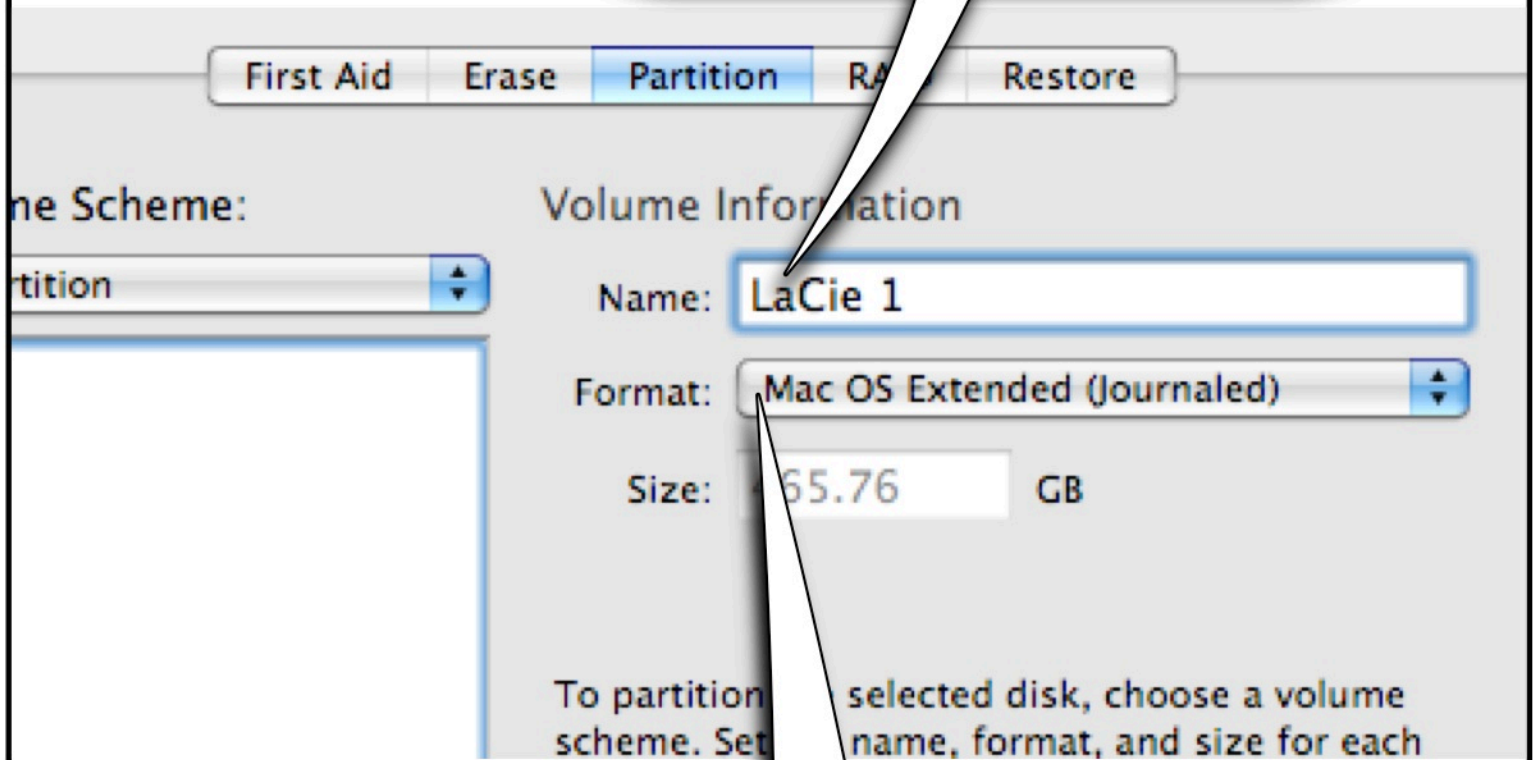
6. Select the External Hard Drive you want to format.

7. Select "Partition".



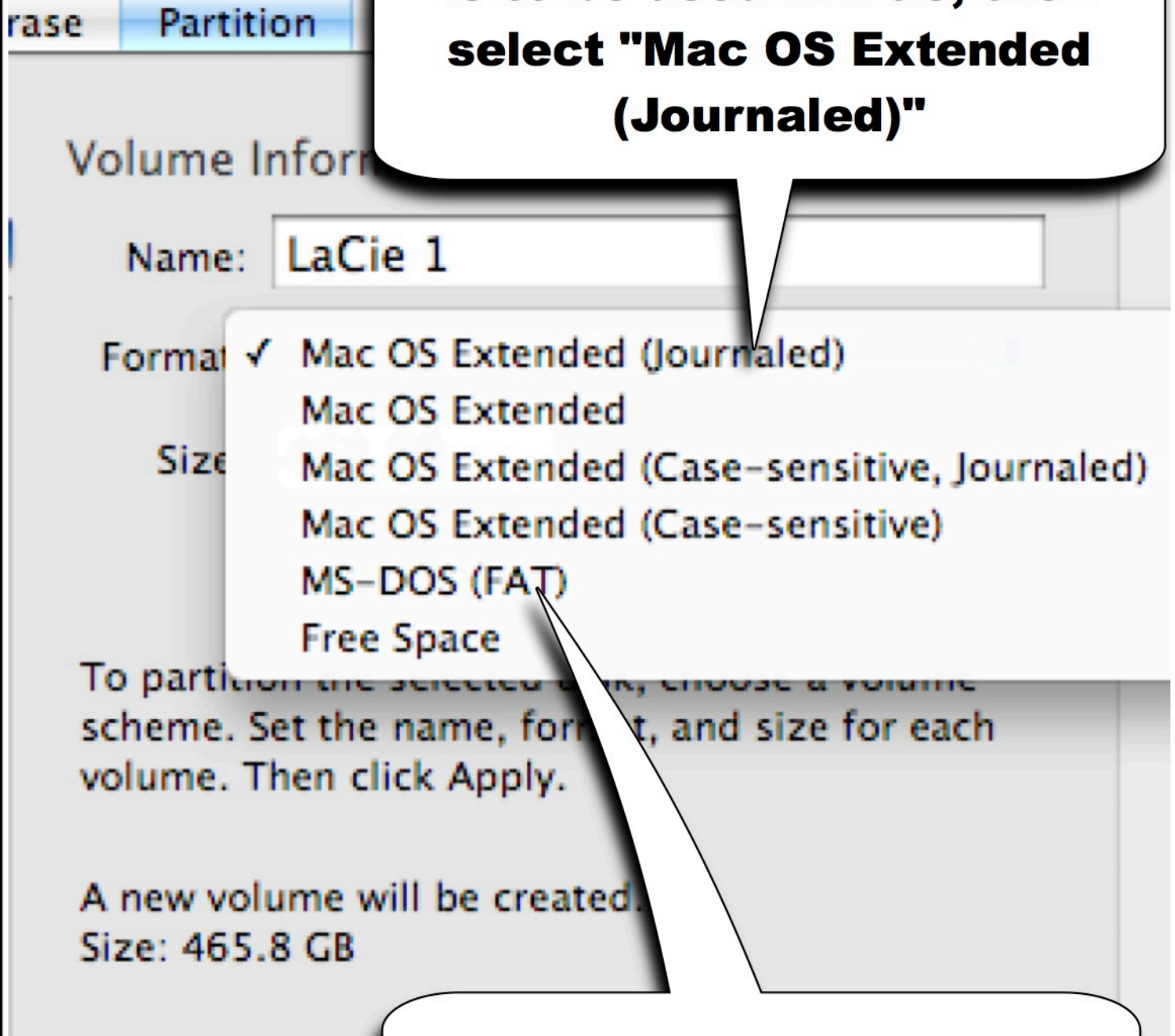
8. Click on "Volume Scheme" and select "1 Partition" from the drop down menu.

9. Give a name to the partition.



10. Click on "Format". A drop down menu will pop up.

11. If the external hard drive is to be used in Mac, then select "Mac OS Extended (Journaled)"



11. If the external hard drive is to be used in Windows, then select "MS-DOS (FAT)".

First Aid

Erase

Partition

RAID

Restore

Volume Scheme:

1 Partition

Volume Information

Name: LaCie 1

Format: Mac OS Extended (Journaled)

Size: 465.76 GB

LaCie 1

To partition the selected disk, choose a volume scheme. Set the name, format, and size for each volume. Then click Apply.

A new volume will be created.
Size: 465.8 GB

+ -

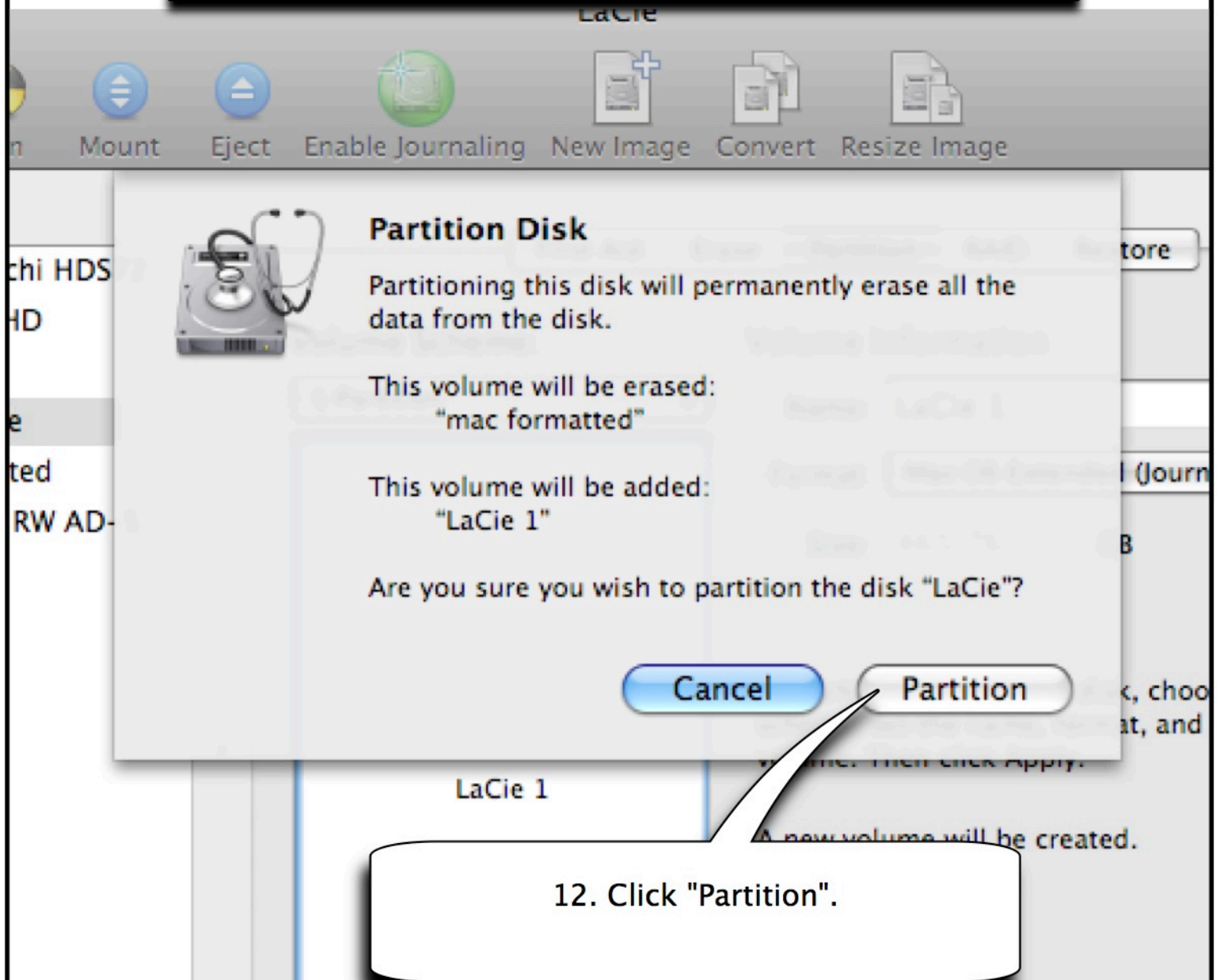
Options...

Revert

Apply

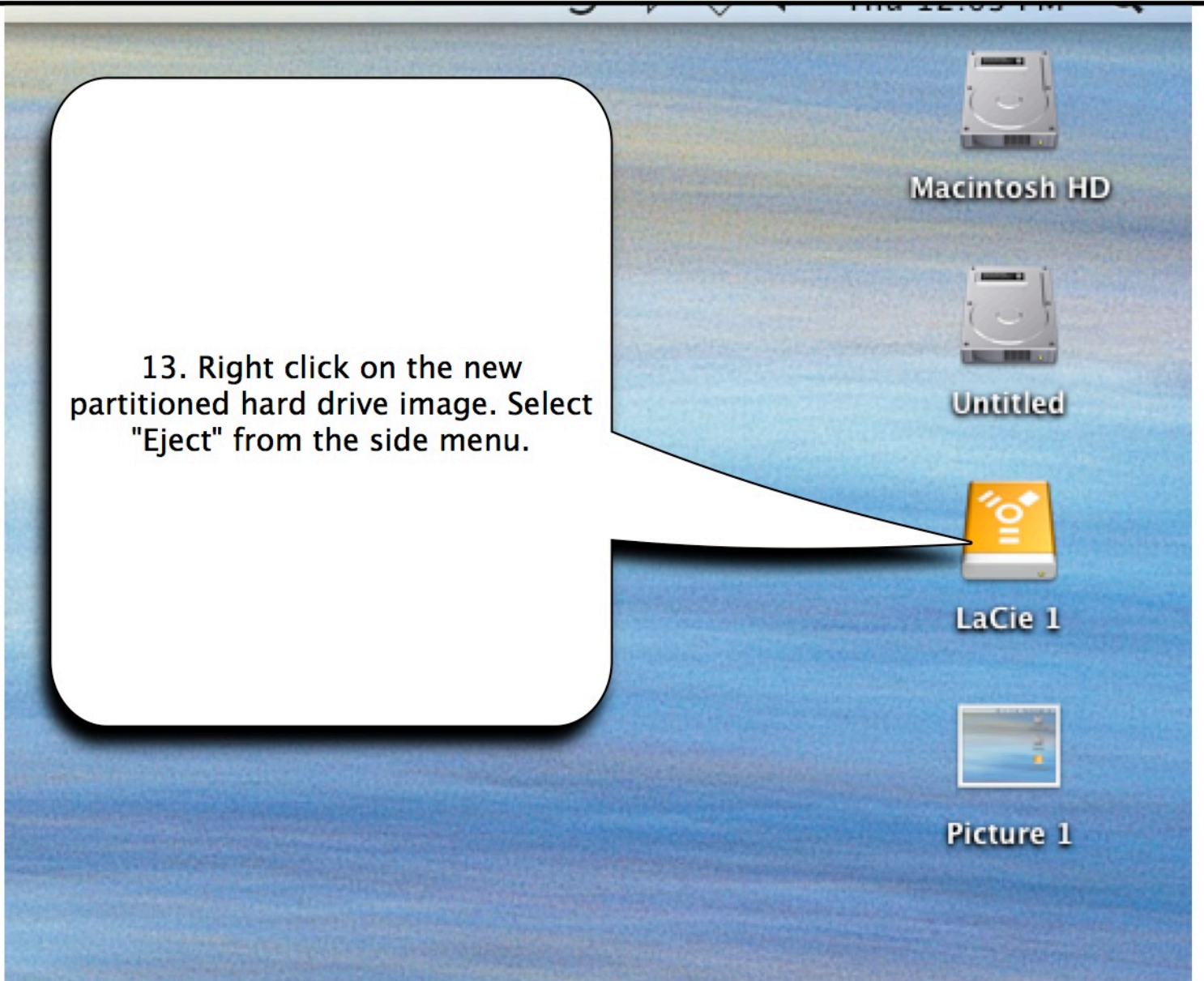
12. Then hit "Apply"

A pop up screen like the one below might appear.



Then exist the "Disk Utility" window.

13. Right click on the new partitioned hard drive image. Select "Eject" from the side menu.



Finally disconnect the external hard drive from the computer.