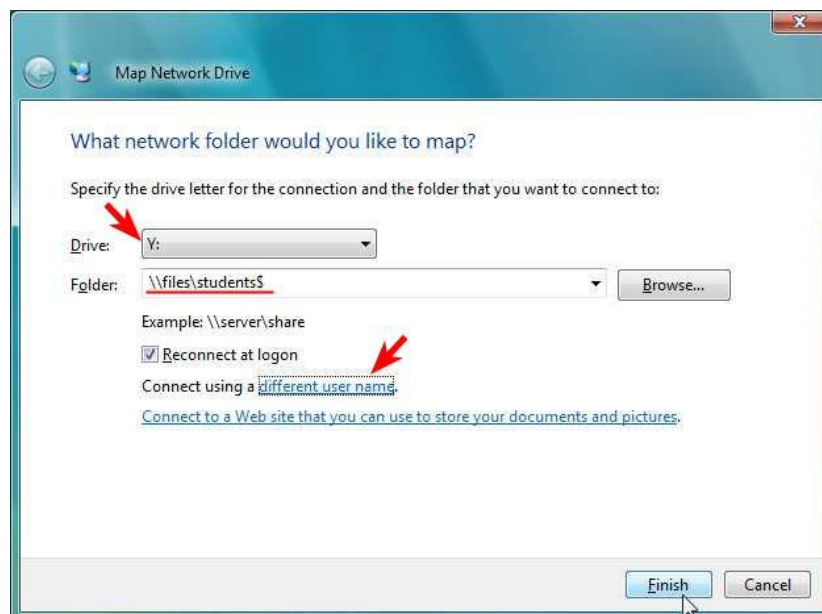


Vista - Connecting to Your Network Folder

From the Start menu, right-click on **Computer** and select **Map Network Drive...**

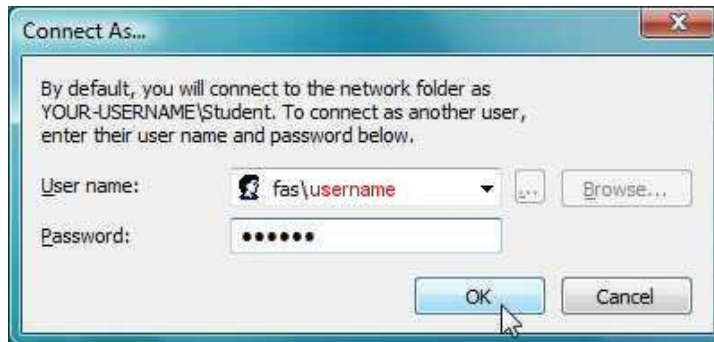


- Select **Y:** as the drive letter
- Type **\\files\students\$** as the folder.
This is not a typo; you need the \$ (dollar sign) at the end!
- If you want your network drive to be connected every time you start your computer, check the **Reconnect at logon** box.
- Then click on **Connect using a different user name**. *Do not* click on Finish yet!



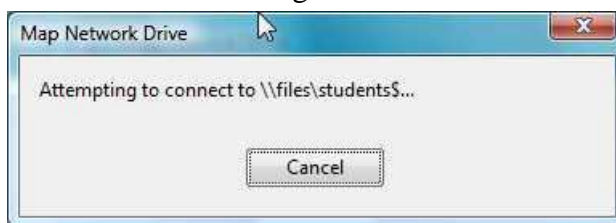
In the window that appears...

- In the **User name** box, type **fas\username** (use your own username)
- Type in your network password in the **Password** box.
- Click **OK**.



- Then click **Finish** in the **Map Network Drive** window.

You'll see it connecting....



Then the Y drive should open on your screen:

