

Dauphin County Stream Team Data Interpretation Workbook

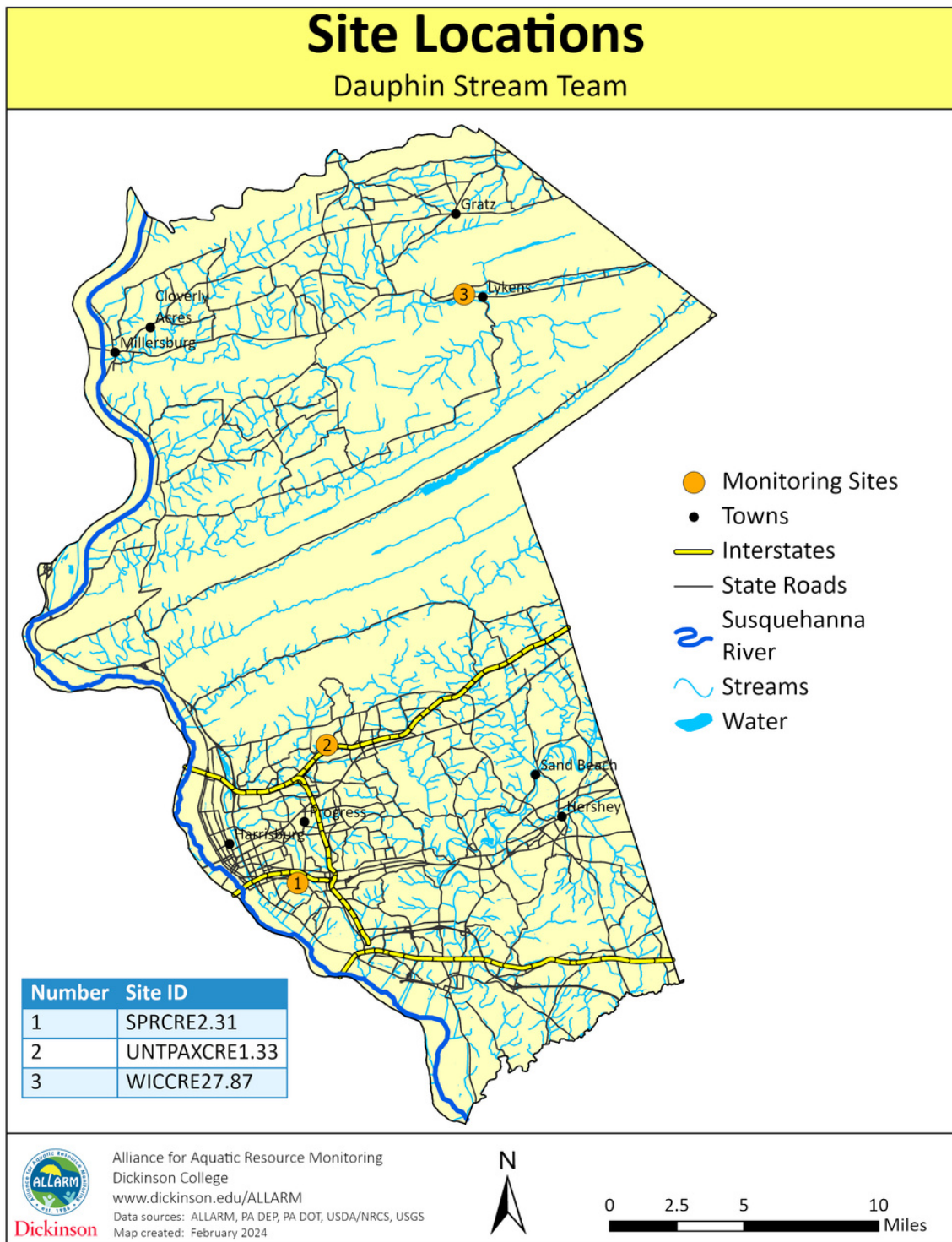


Dickinson

Stream Team | streamteam@dickinson.edu
Alliance for Aquatic Resource Monitoring (ALLARM)
dickinson.edu/ALLARM | [@ALLARMwater](https://www.instagram.com/ALLARMwater) | 717.245.1565

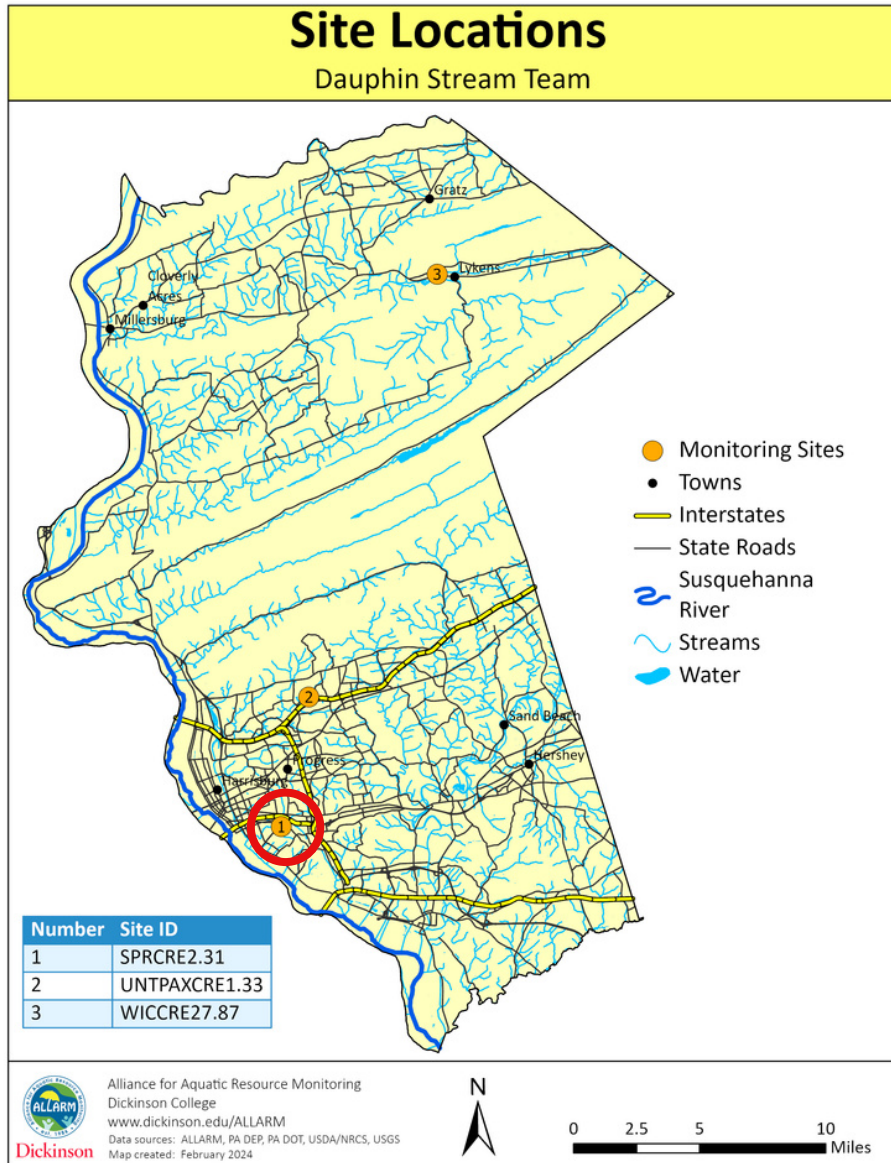


Monitoring Site Locations



Spring Creek (SPRCRE 2.31)

Monitor(s): Illyse Kazar & James Dillon



Site information:

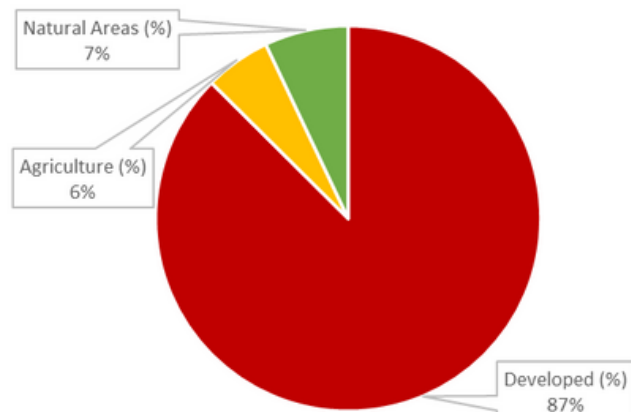
Drains: 10 mi²

Impaired: Yes, aquatic life - urban runoff/storm sewers, habitat

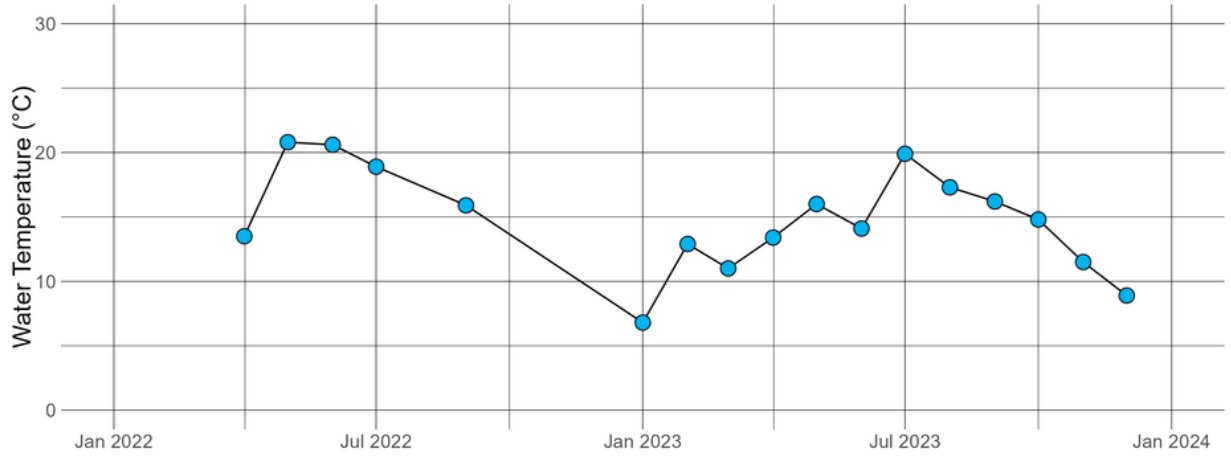
Designation: Cold water fishes (CWF)

Geology: 30% Calcareous, 70% Non-calcareous

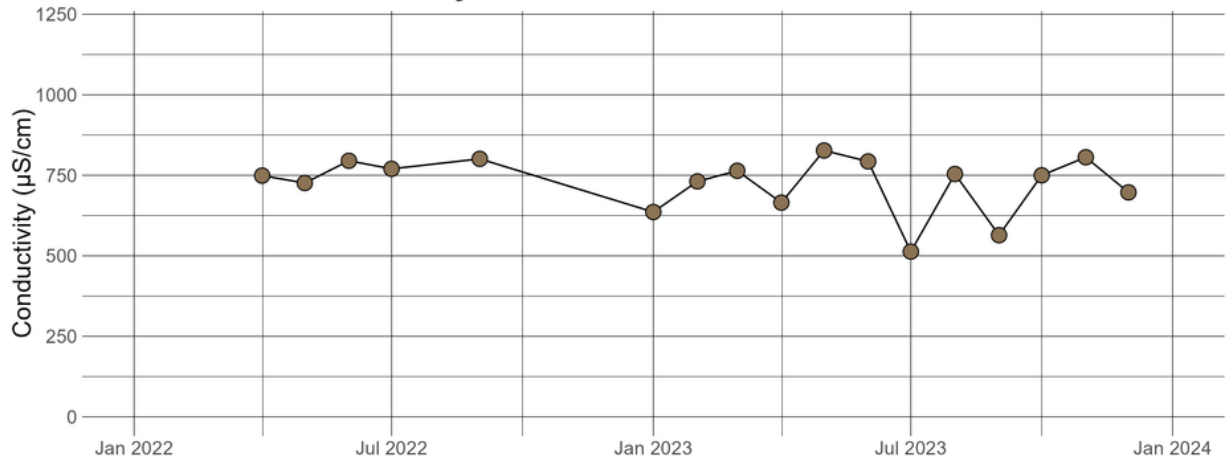
Land Use



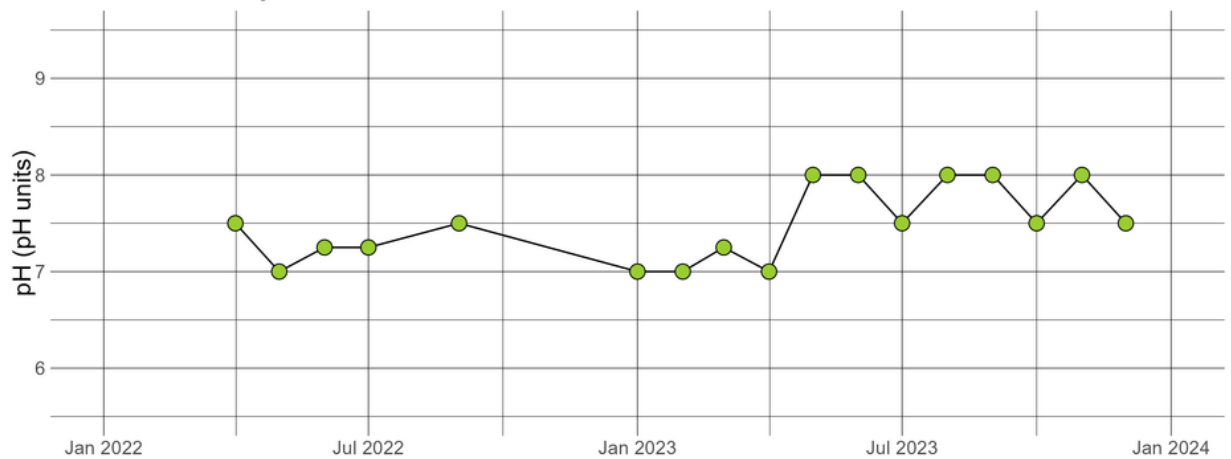
SPRCRE2.31 - Water Temperature



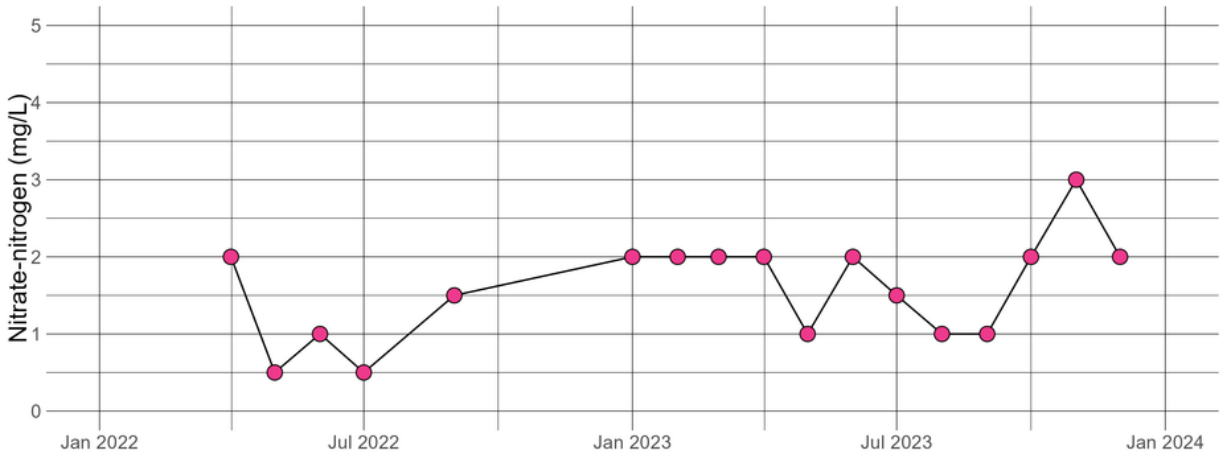
SPRCRE2.31 - Conductivity



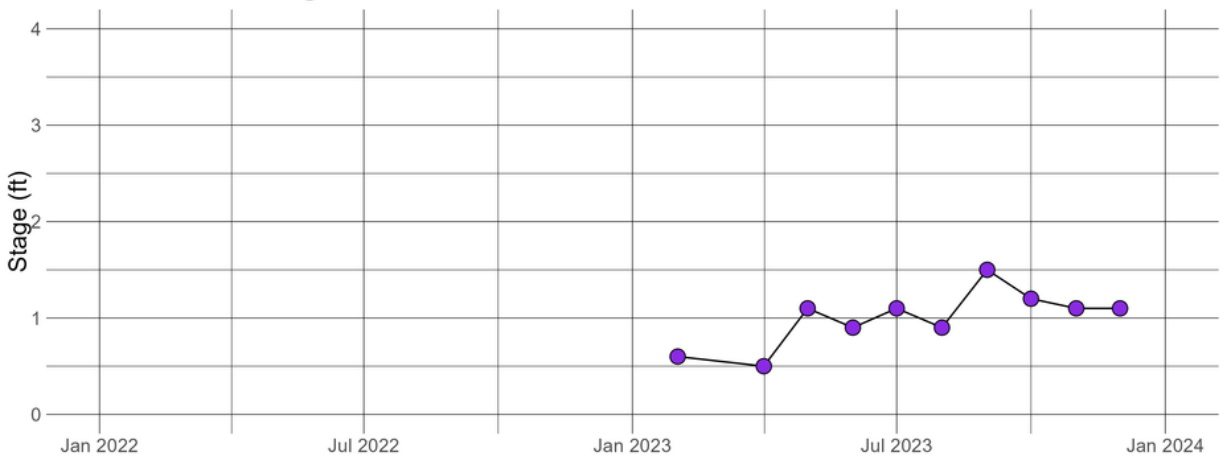
SPRCRE2.31 - pH



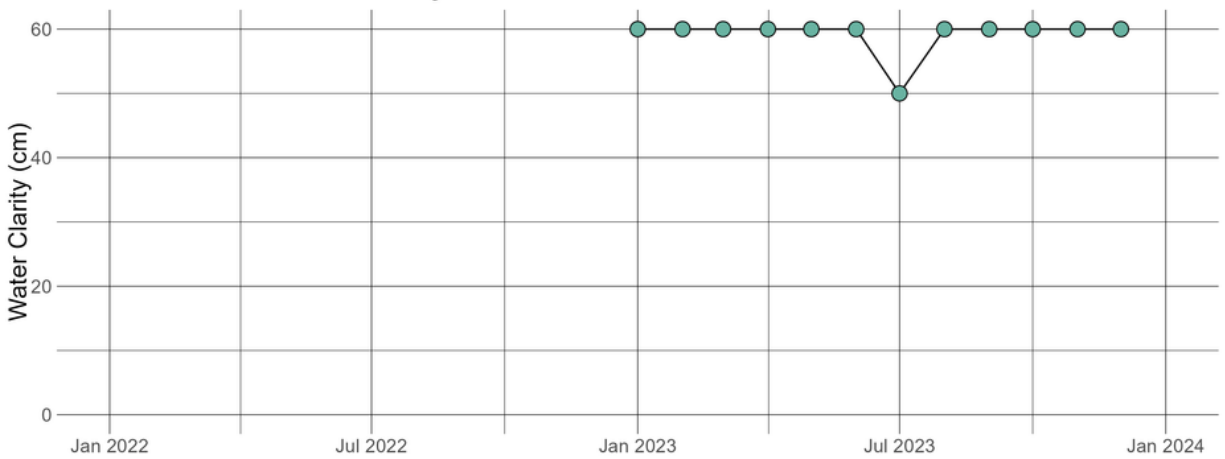
SPRCRE2.31 - Nitrate-nitrogen



SPRCRE2.31 - Stage



SPRCRE2.31 - Water Clarity



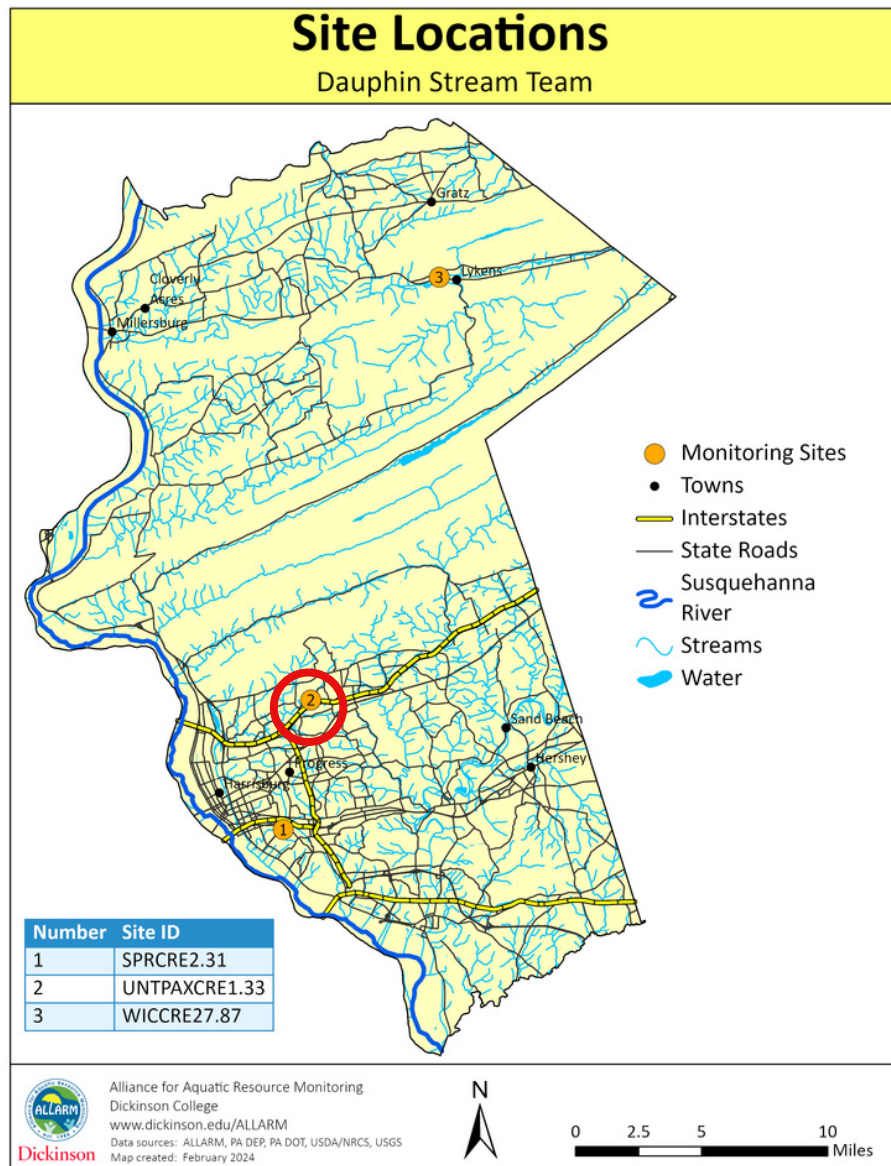
Raw Data and Summary Statistics

date	con	nitrate	ph	stage	clarity	watemp
Apr-22	749	2	7.5			13.5
May-22	726	0.5	7			20.8
Jun-22	795	1	7.25			20.6
Jul-22	770	0.5	7.25			18.9
Sep-22	801	1.5	7.5			15.9
Jan-23	636	2	7		60	6.8
Feb-23	731	2	7	0.6	60	12.9
Mar-23	764	2	7.25		60	11
Apr-23	665	2	7	0.5	60	13.4
May-23	827	1	8	1.1	60	16
Jun-23	793	2	8	0.9	60	14.1
Jul-23	513	1.5	7.5	1.1	50	19.9
Aug-23	754	1	8	0.9	60	17.3
Sep-23	564	1	8	1.5	60	16.2
Oct-23	750	2	7.5	1.2	60	14.8
Nov-23	806	3	8	1.1	60	11.5
Dec-23	697	2	7.5	1.1	60	8.9

Variable	Min	Max	Range	Average	Median
Conductivity	513	827	314	726	750
Nitrate-Nitrogen	0.5	3	2.5	1.6	2
pH	7	8	1	7.5	7.5
Stage	0.5	1.5	1	1	1.1
Water Clarity	50	60	10	59	60
Water Temp.	6.8	21	14	15	15

Paxton Creek Tributary (UNTPAXCRE1.33)

Monitor(s): Cori Crum & Donnie Frysinger



Land Use

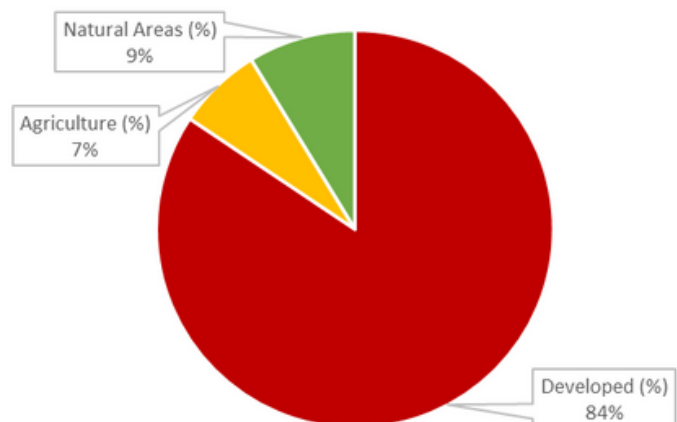
Site information:

Drains: 3 mi²

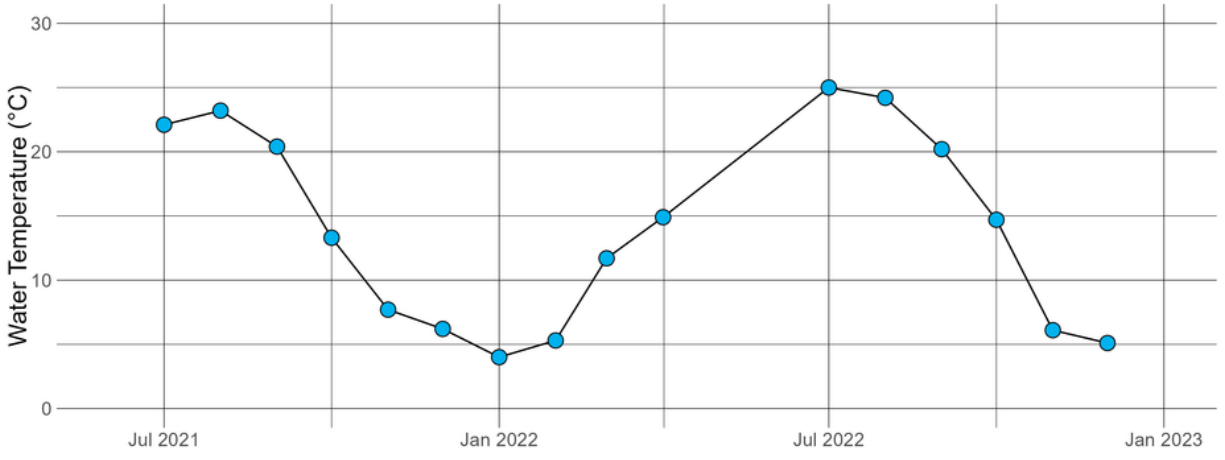
Impaired: Yes, recreation - pathogens

Designation: Warm water fishes (WWF)

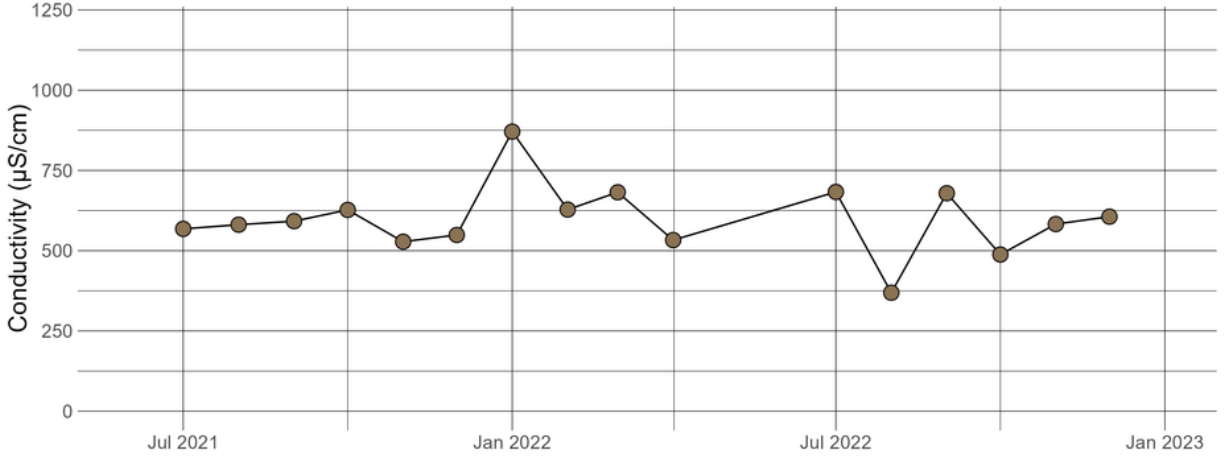
Geology: 16% Calcareous, 84% Non-calcareous



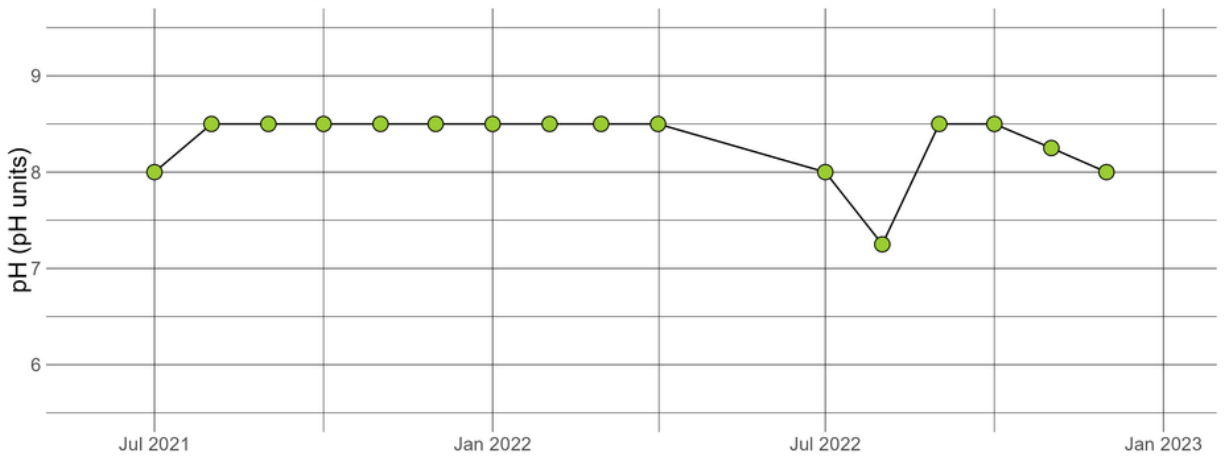
UNTPAXCRE1.33 - Water Temperature



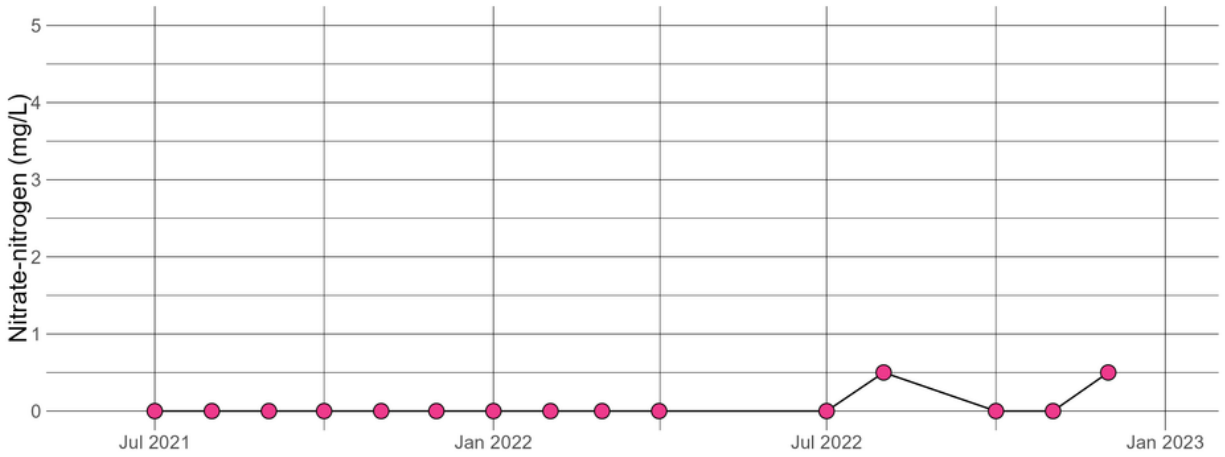
UNTPAXCRE1.33 - Conductivity



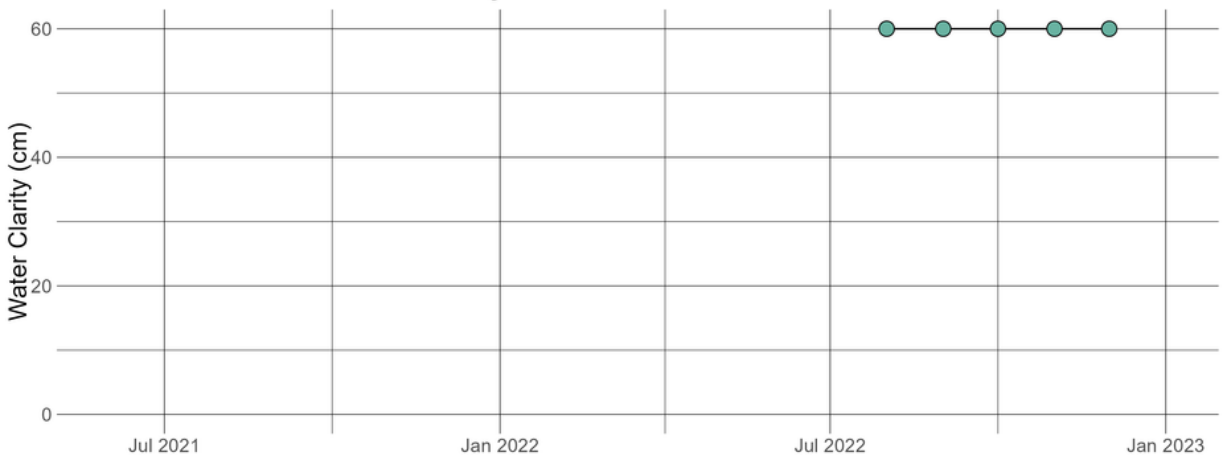
UNTPAXCRE1.33 - pH



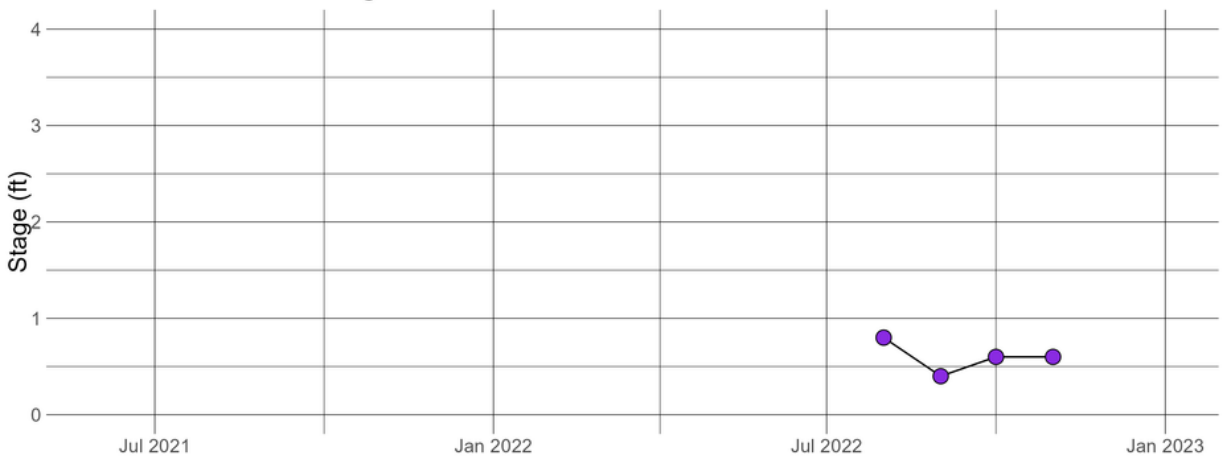
UNTPAXCRE1.33 - Nitrate-nitrogen



UNTPAXCRE1.33 - Water Clarity



UNTPAXCRE1.33 - Stage



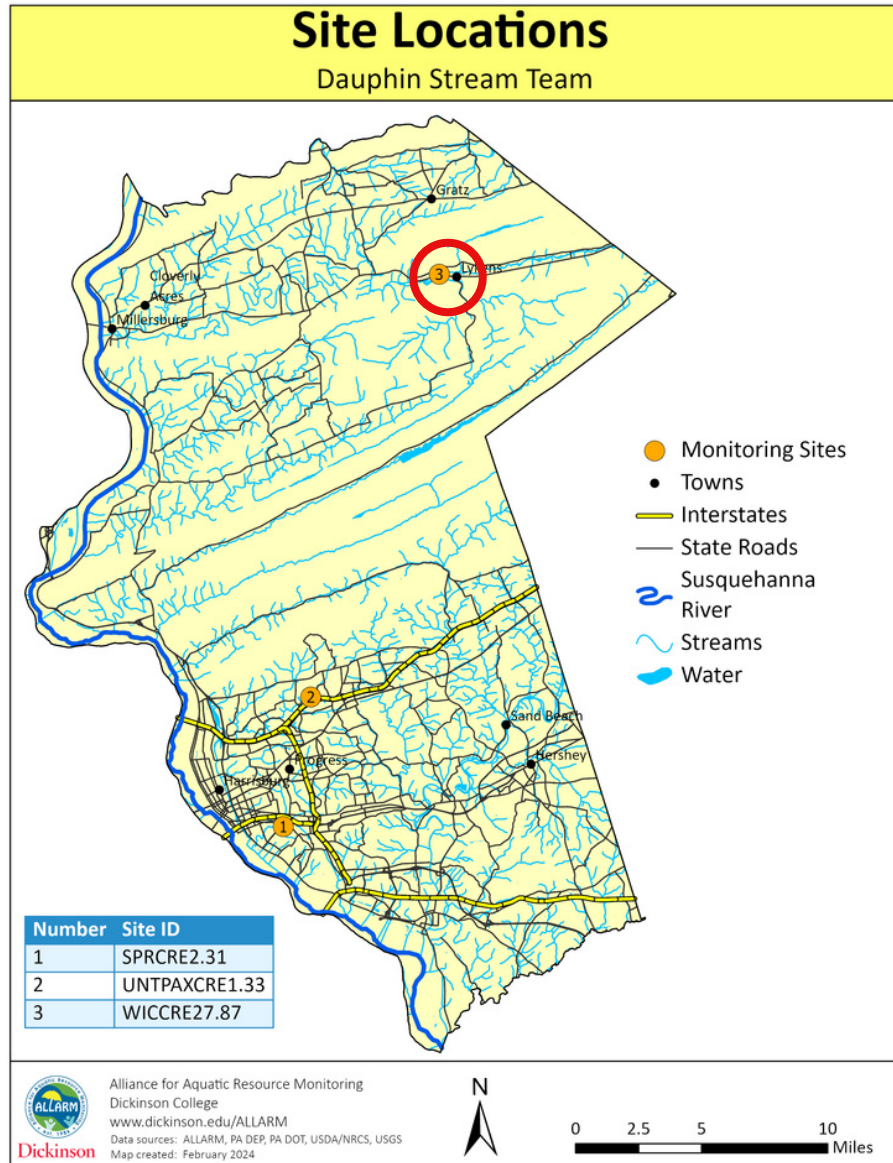
Raw Data and Summary Statistics

date	con	nitrate	ph	stage	clarity
Jul-21	568	0	8		
Aug-21	581	0	8.5		
Sep-21	592	0	8.5		
Oct-21	627	0	8.5		
Nov-21	528	0	8.5		
Dec-21	549	0	8.5		
Jan-22	871	0	8.5		
Feb-22	628	0	8.5		
Mar-22	682	0	8.5		
Apr-22	533	0	8.5		
Jul-22	683	0	8		
Aug-22	369	0.5	7.25	0.8	60
Sep-22	679		8.5	0.4	60
Oct-22	488	0	8.5	0.6	60
Nov-22	583	0	8.25	0.6	60
Dec-22	606	0.5	8		60

Variable	Min	Max	Range	Average	Median
Conductivity	369	871	502	598	588
Nitrate-Nitrogen	0	0.5	0.5	0.067	0
pH	7.2	8.5	1.2	8.3	8.5
Stage	0.4	0.8	0.4	0.6	0.6
Water Clarity	60	60	0	60	60
Water Temp.	4	25	21	14	14

Wiconisco Creek (WICCRE27.87)

Monitor(s): Ellen Shenk & William Fee



Site information:

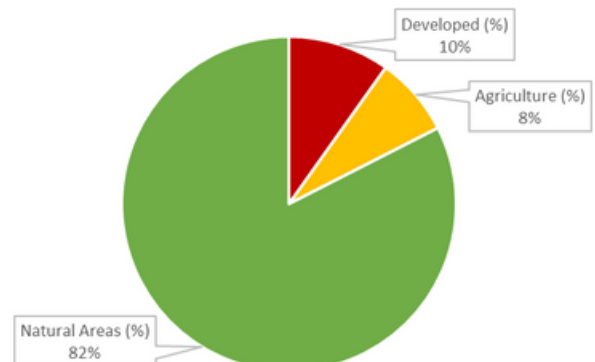
Drains: 34 mi²

Impaired: Yes, recreation - pathogens

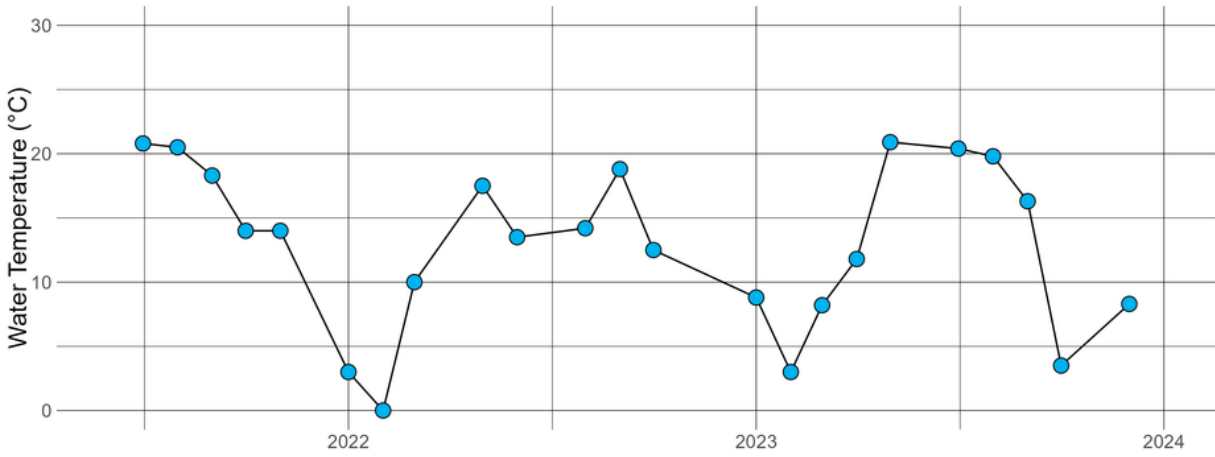
Designation: Warm water fishes (WWF)

Geology: 100% Non-calcareous

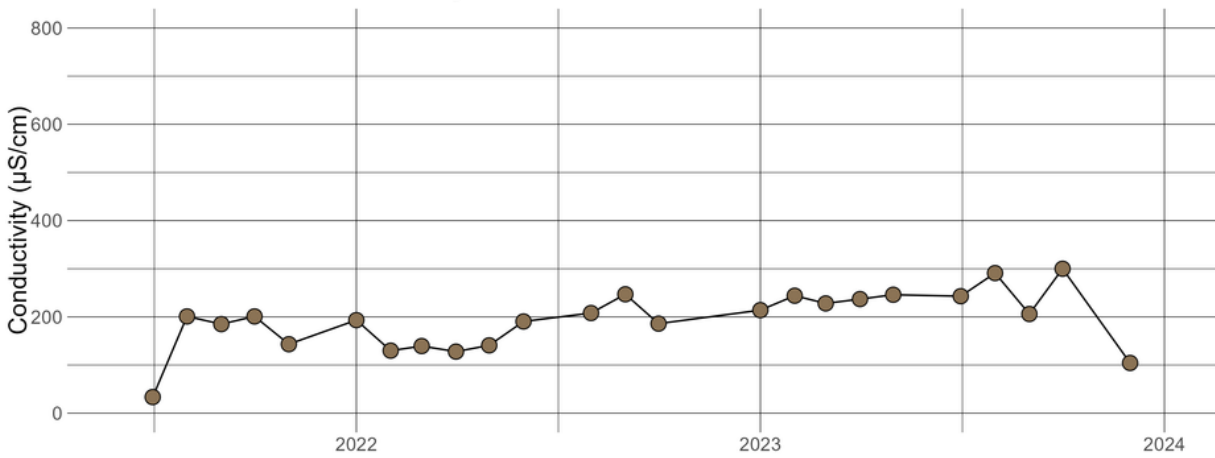
Land Use



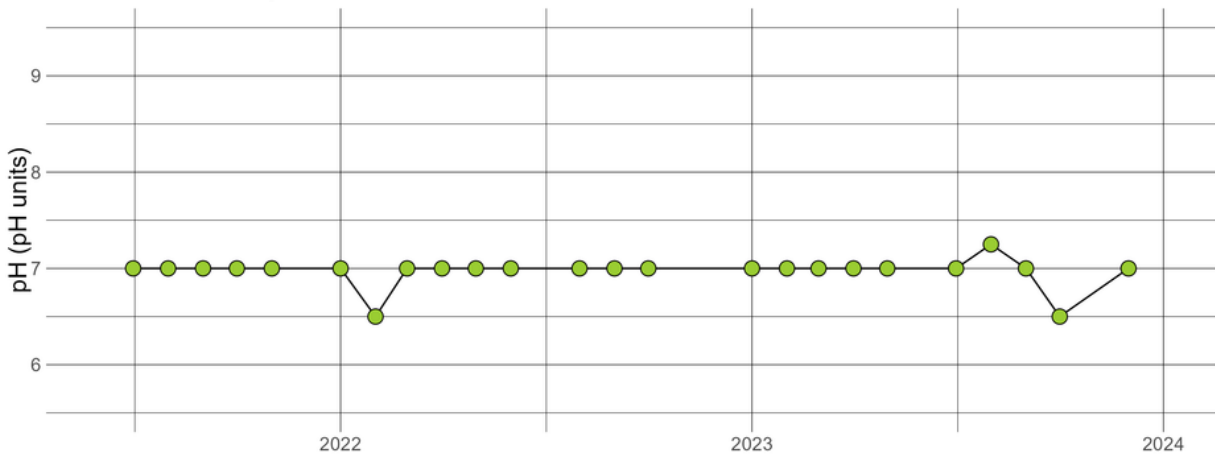
WICCRE27.87 - Water Temperature



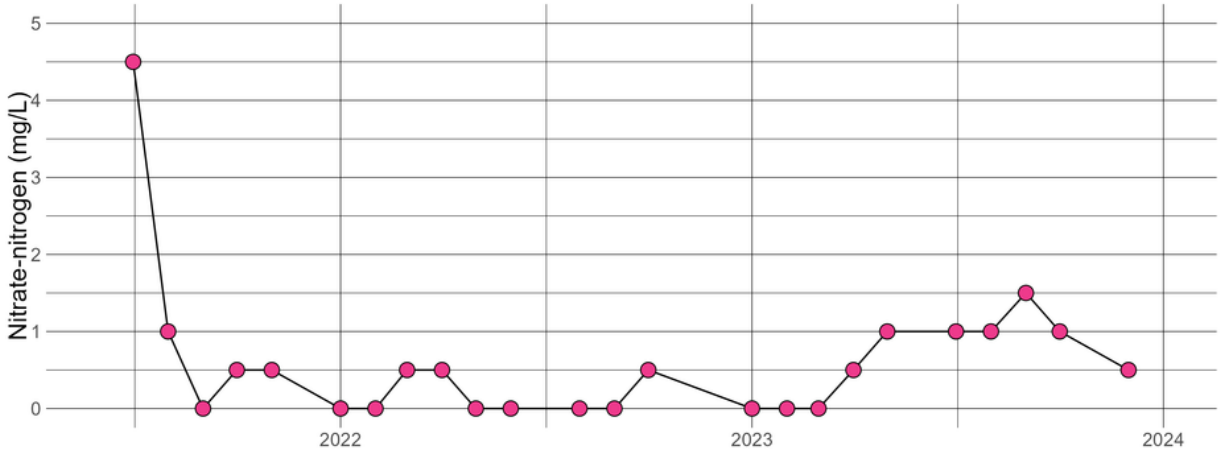
WICCRE27.87 - Conductivity



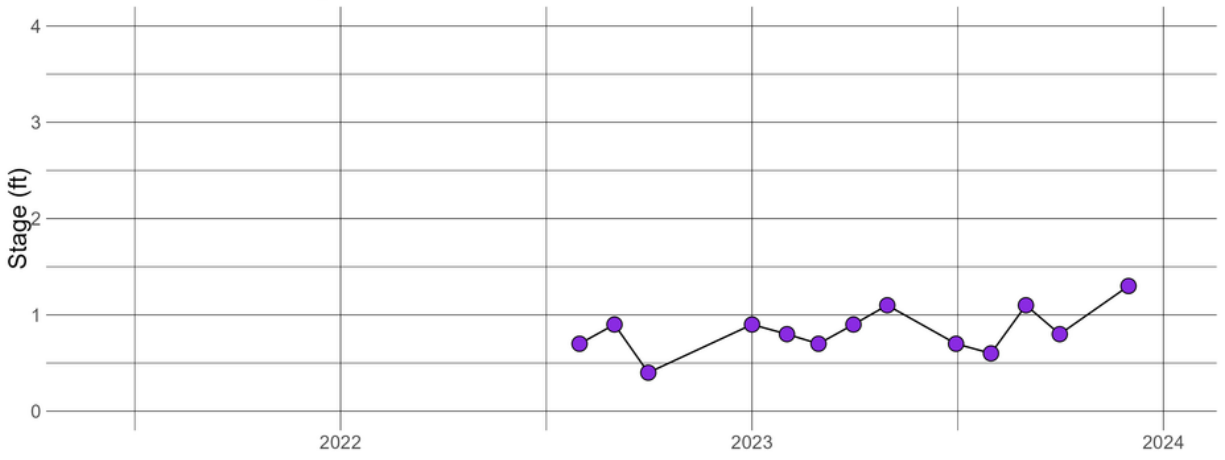
WICCRE27.87 - pH



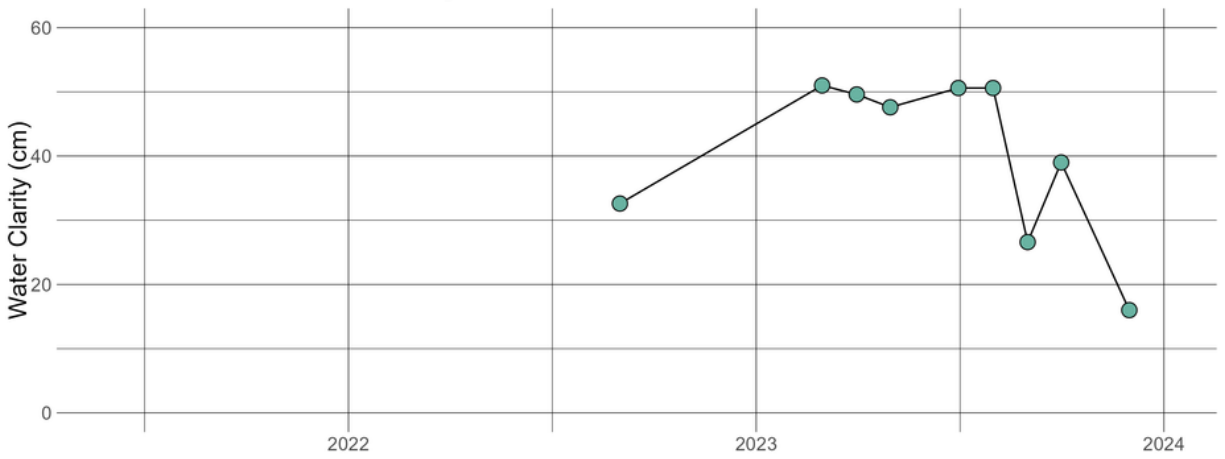
WICCRE27.87 - Nitrate-nitrogen



WICCRE27.87 - Stage



WICCRE27.87 - Water Clarity



Raw Data and Summary Statistics

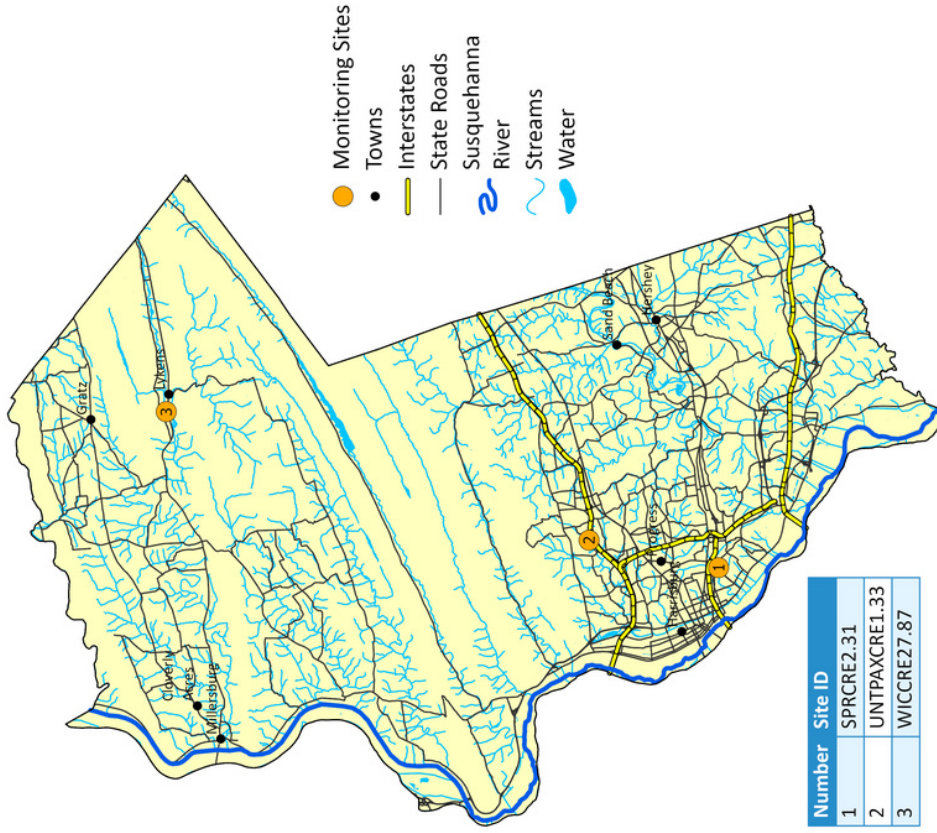
date	con	nitrate	ph	stage	clarity	watemp
Jul-21	33.5	4.5	7			20.8
Aug-21	201	1	7			20.5
Sep-21	185	0	7			18.3
Oct-21	201	0.5	7			14
Nov-21	143.3	0.5	7			14
Jan-22	193.3	0	7			3
Feb-22	129.9	0	6.5			0
Mar-22	139.4	0.5	7			10
Apr-22	127.9	0.5	7			
May-22	140.9	0	7			17.5
Jun-22	190.5	0	7			13.5
Aug-22	208	0	7	0.7		14.2
Sep-22	247	0	7	0.9	32.6	18.8
Oct-22	186	0.5	7	0.4		12.5
Jan-23	214	0	7	0.9		8.8
Feb-23	244	0	7	0.8		3
Mar-23	228	0	7	0.7	51	8.2
Apr-23	237	0.5	7	0.9	49.6	11.8
May-23	246	1	7	1.1	47.6	20.9
Jul-23	243	1	7	0.7	50.6	20.4
Aug-23	291	1	7.25	0.6	50.6	19.8
Sep-23	206	1.5	7	1.1	26.6	16.3
Oct-23	300	1	6.5	0.8	39	3.5
Dec-23	104.3	0.5	7	1.3	16	8.3

Variable	Min	Max	Range	Average	Median
Conductivity	34	300	266	193	201
Nitrate-Nitrogen	0	4.5	4.5	0.6	0.5
pH	6.5	7.2	0.75	7	7
Stage	0.4	1.3	0.9	0.84	0.8
Water Clarity	16	51	35	40	48
Water Temp.	0	21	21	13	14

Supplemental Maps

Site Locations

Dauphin Stream Team

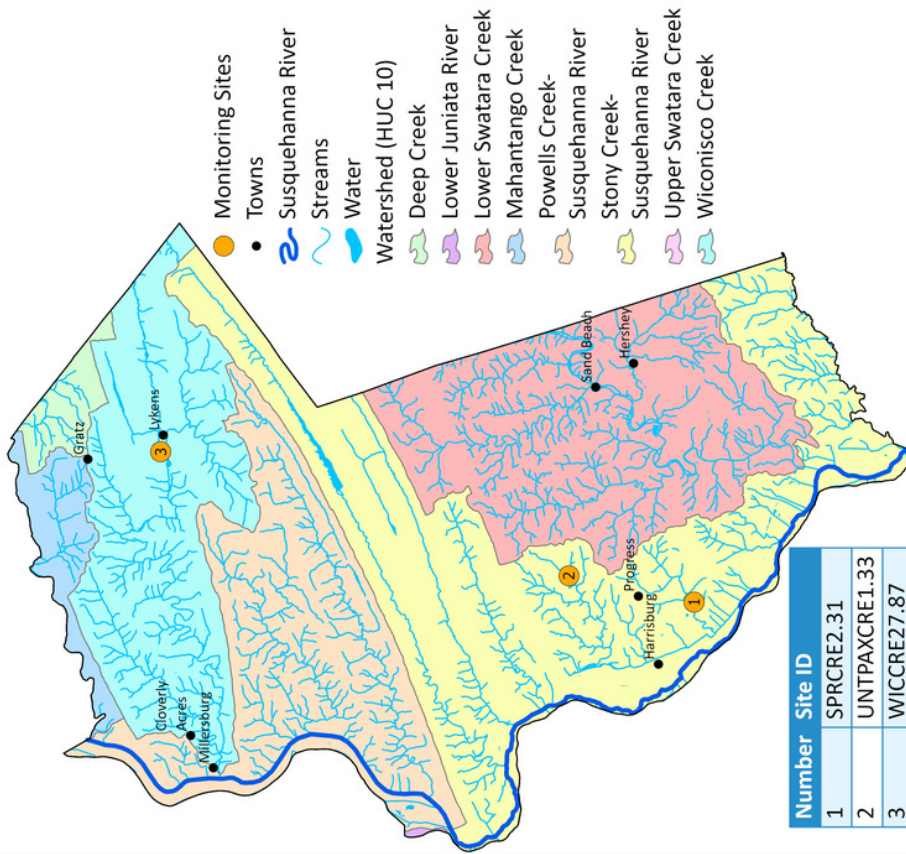


Alliance for Aquatic Resource Monitoring
Dickinson College
www.dickinson.edu/ALLARM
Data sources: ALLARM, PA DEP, PA DOT, USDA/NRCS, USGS
Map created: February 2024



Subwatersheds

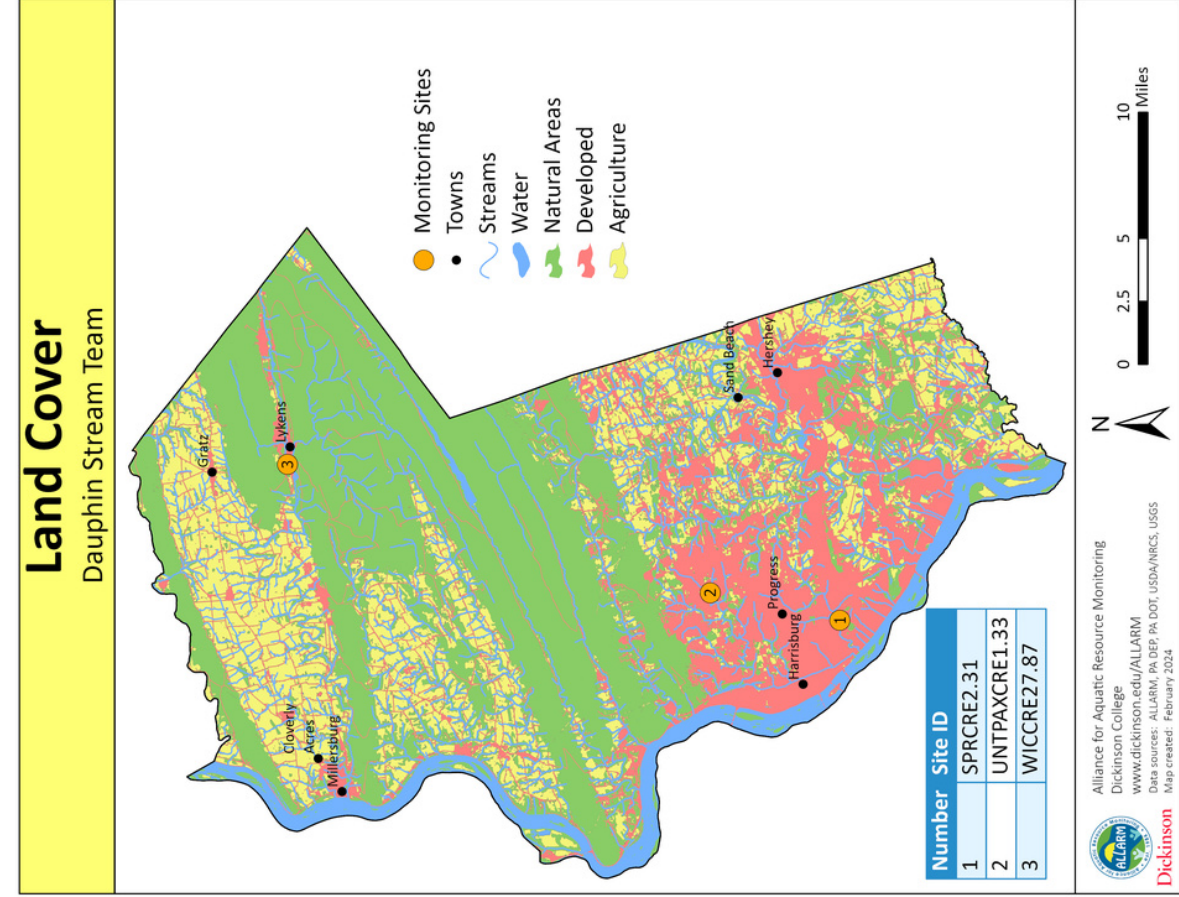
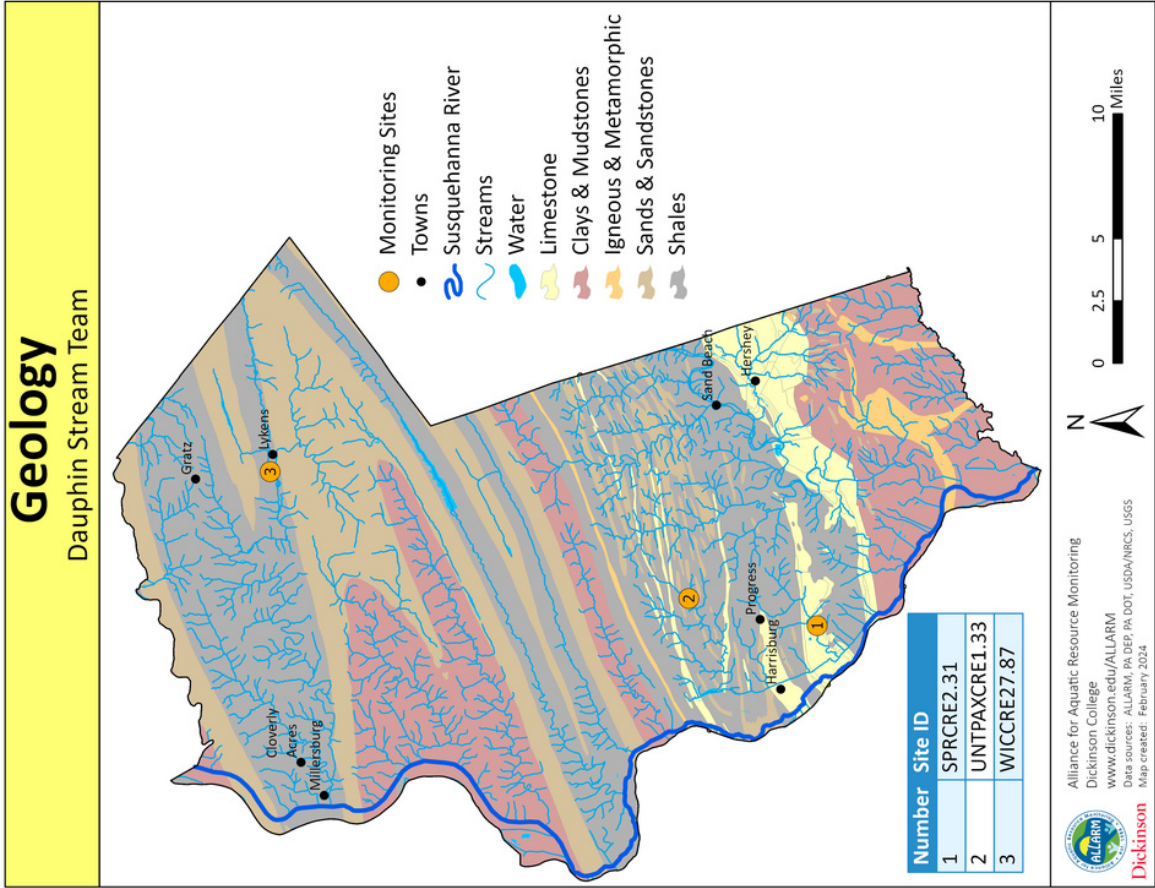
Dauphin Stream Team



Alliance for Aquatic Resource Monitoring
Dickinson College
www.dickinson.edu/ALLARM
Data sources: ALLARM, PA DEP, PA DOT, USDA/NRCS, USGS
Map created: February 2024



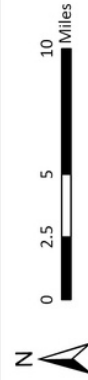
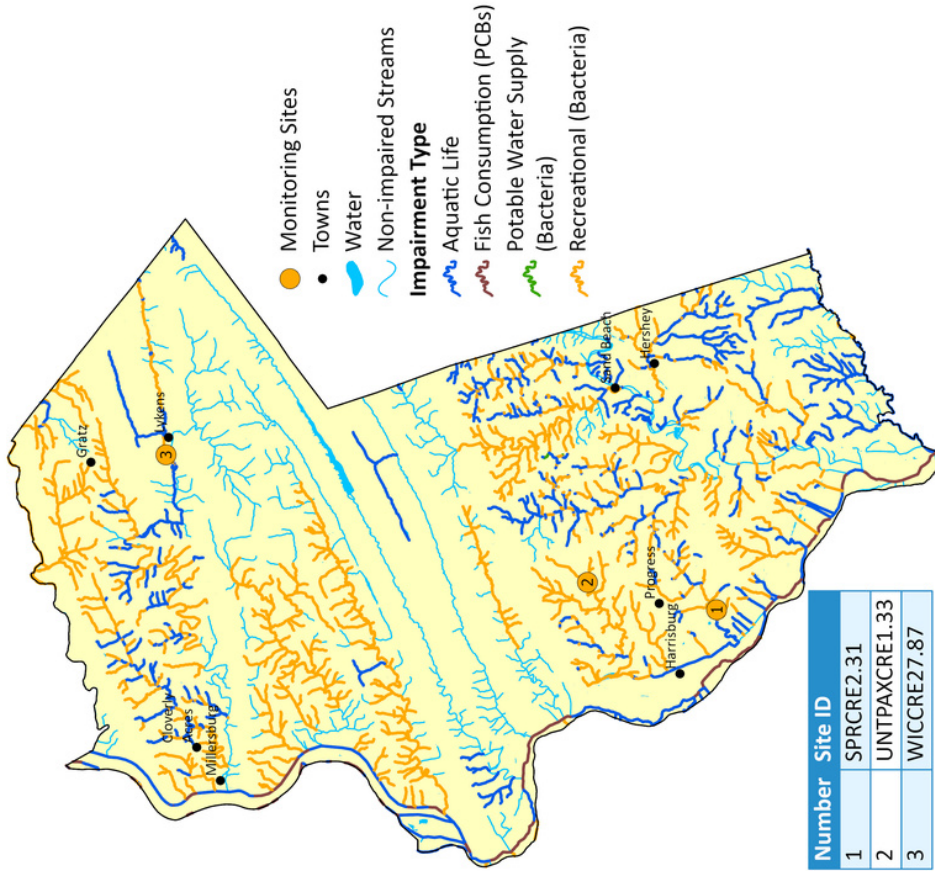
Supplemental Maps



Supplemental Maps

Impaired Streams

Dauphin Stream Team

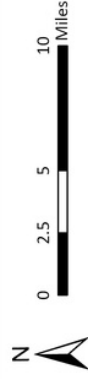
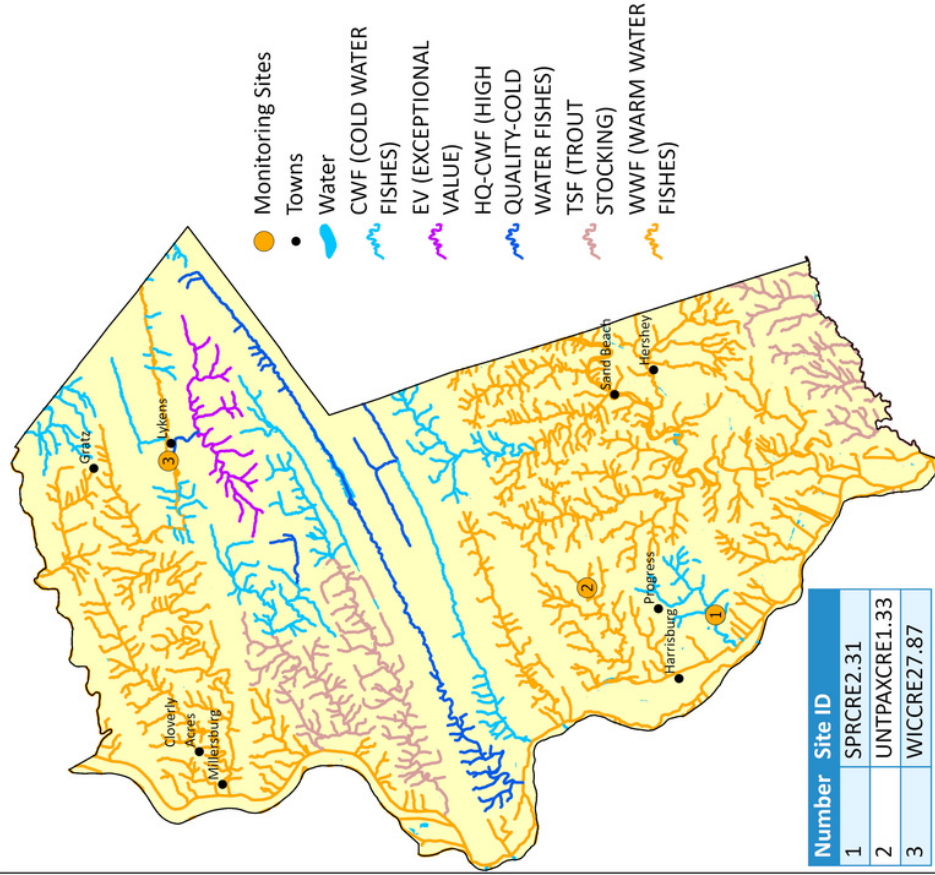


Alliance for Aquatic Resource Monitoring
 Dickinson College
www.dickinson.edu/ALLARM
 Data sources: ALLARM, PA DEP, PA DOT, USDA/NRCS, USGS
 Map created: February 2024



Stream Designated Uses

Dauphin Stream Team



Alliance for Aquatic Resource Monitoring
 Dickinson College
www.dickinson.edu/ALLARM
 Data sources: ALLARM, PA DEP, PA DOT, USDA/NRCS, USGS
 Map created: February 2024

