

Lycoming County Stream Team Data Interpretation Workbook



Dickinson

Stream Team | streamteam@dickinson.edu
Alliance for Aquatic Resource Monitoring (ALLARM)
dickinson.edu/ALLARM | [@ALLARMwater](https://www.instagram.com/ALLARMwater) | 717.245.1565



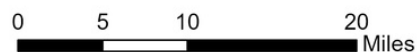
Monitoring Site Locations

Monitoring Site Locations Lycoming Stream Team



Dickinson

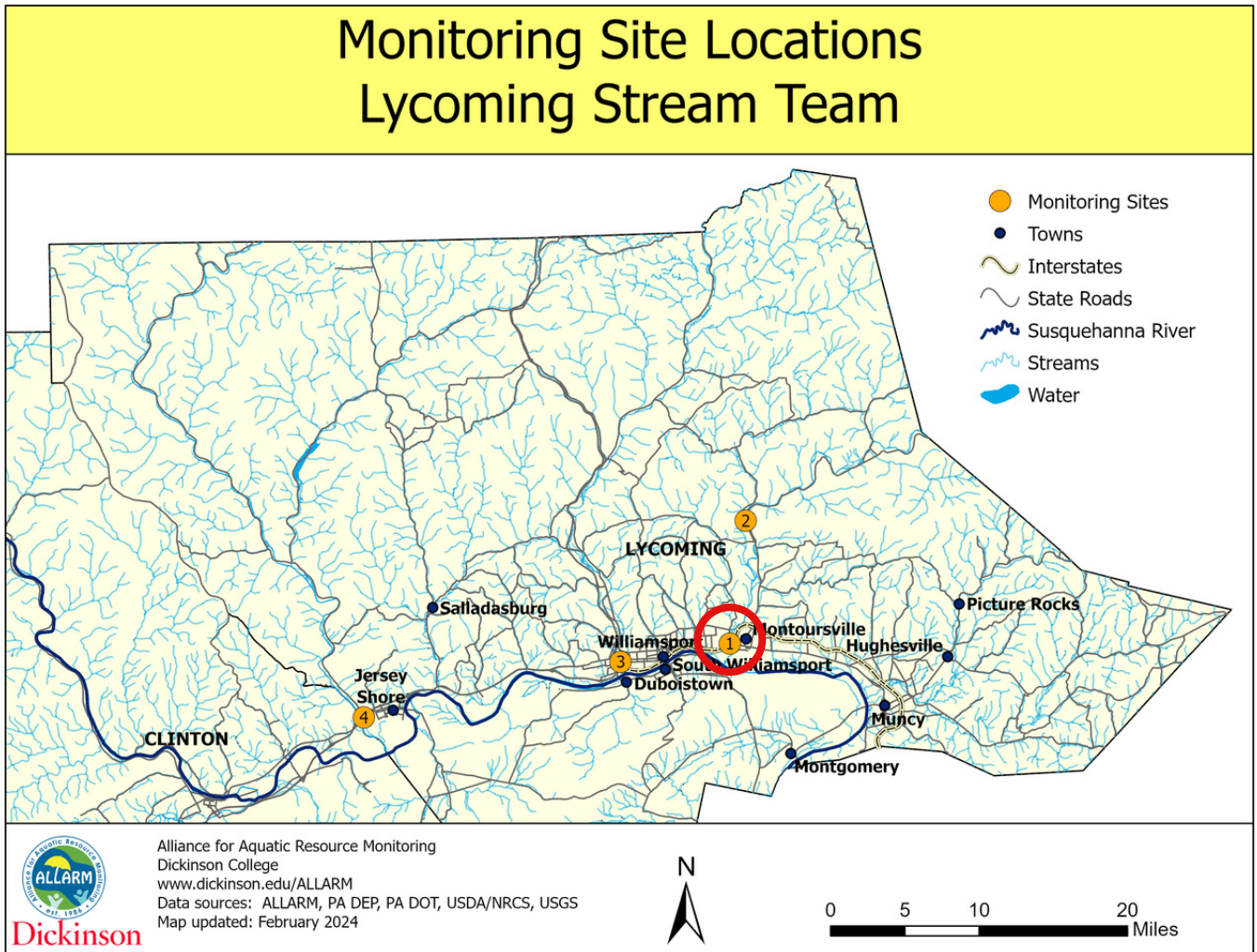
Alliance for Aquatic Resource Monitoring
Dickinson College
www.dickinson.edu/ALLARM
Data sources: ALLARM, PA DEP, PA DOT, USDA/NRCS, USGS
Map updated: February 2024



Site Number	Name	Site ID
1	Loyalsock Creek (downstream)	LOYCRE1.17
2	Loyalsock Creek (upstream)	LOYCRE8.66
3	Lycoming Creek	LYCCRE0.67
4	Pine Creek	PINCRE2.61

Loyalsock Creek- Downstream (LOYCRE1.17)

Monitor(s): Lee Robinson, Robert Raker, Chad Belcher, & Kelly Crist



Site information:

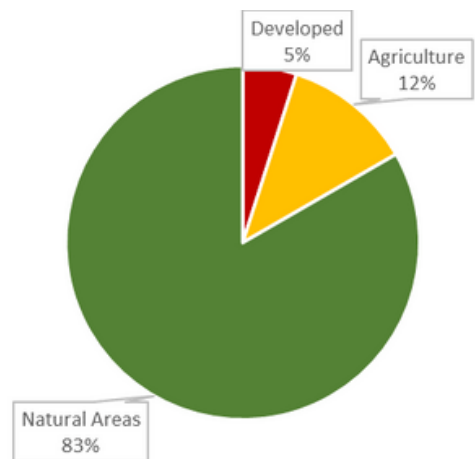
Drains: 494 mi²

Impaired: No

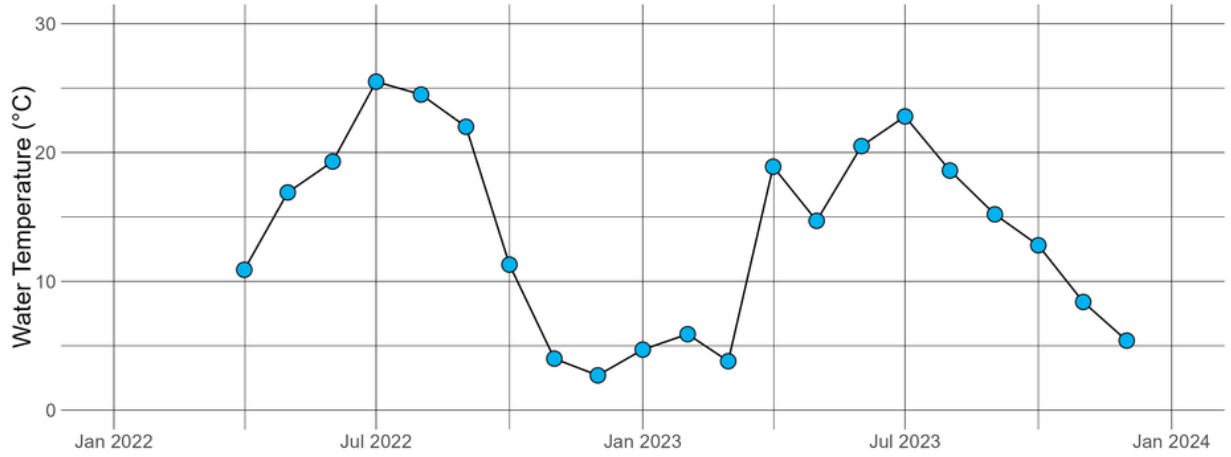
Designation: Trout stocking (TSF)

Geology: 100% Non-calcareous

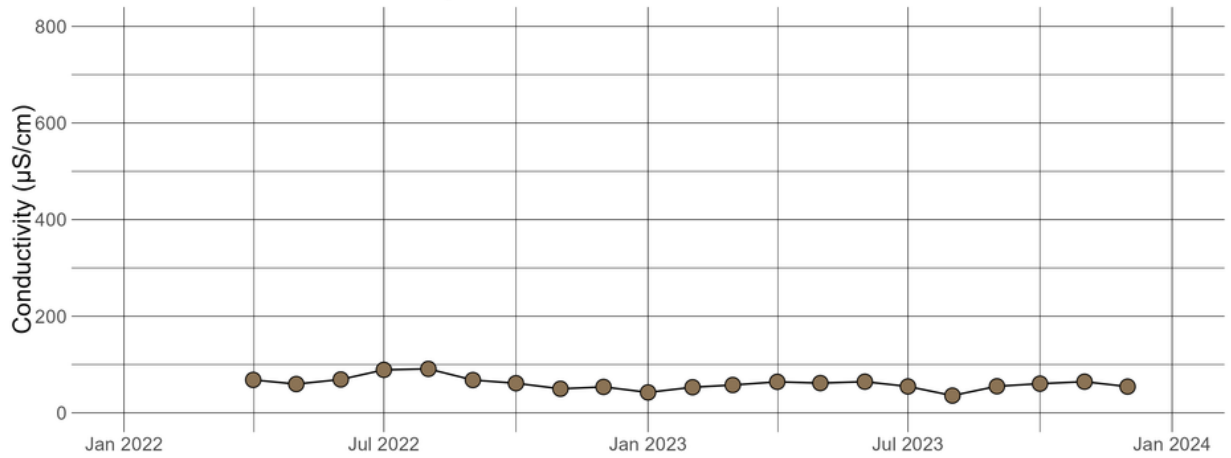
Land Use



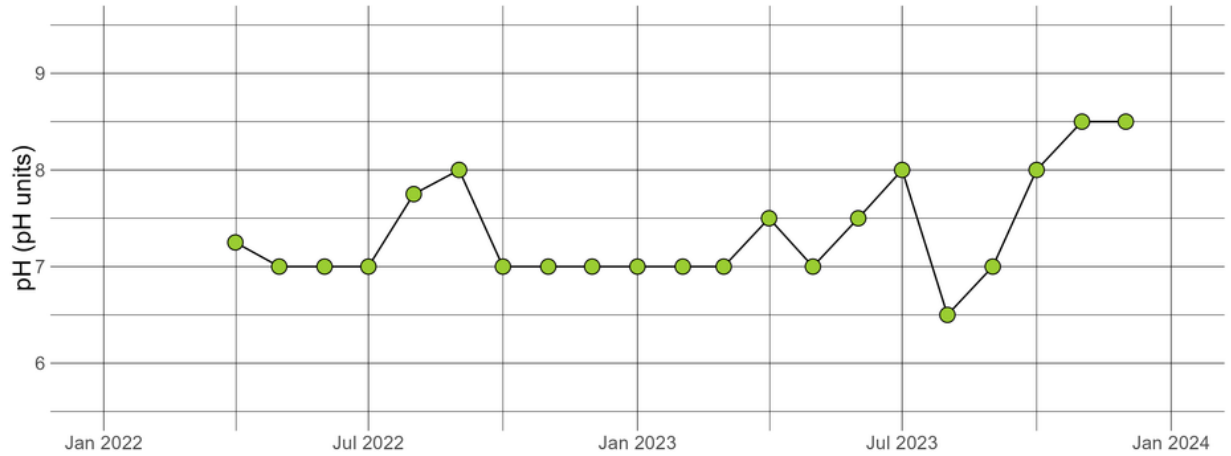
LOYCRE1.17 - Water Temperature



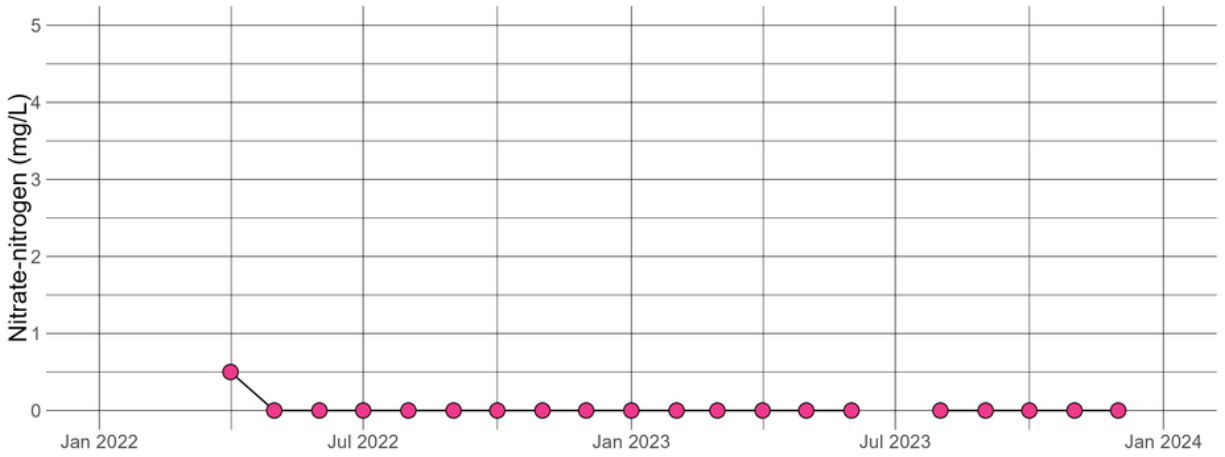
LOYCRE1.17 - Conductivity



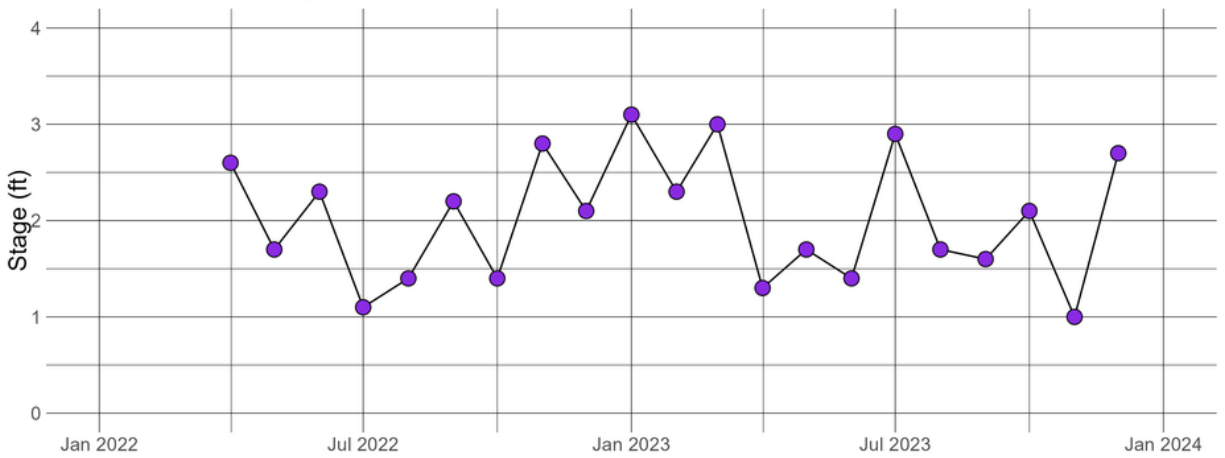
LOYCRE1.17 - pH



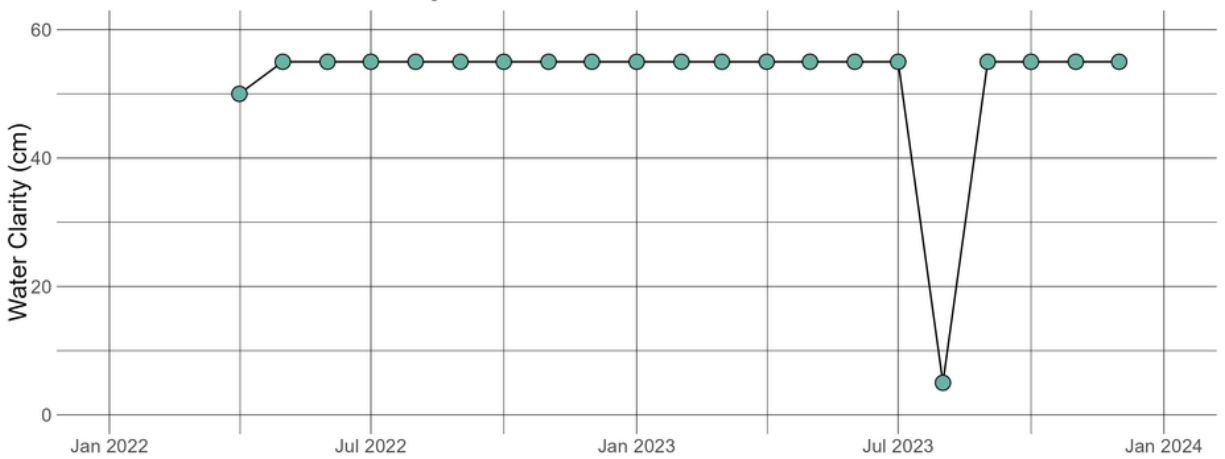
LOYCRE1.17 - Nitrate-nitrogen



LOYCRE1.17 - Stage



LOYCRE1.17 - Water Clarity



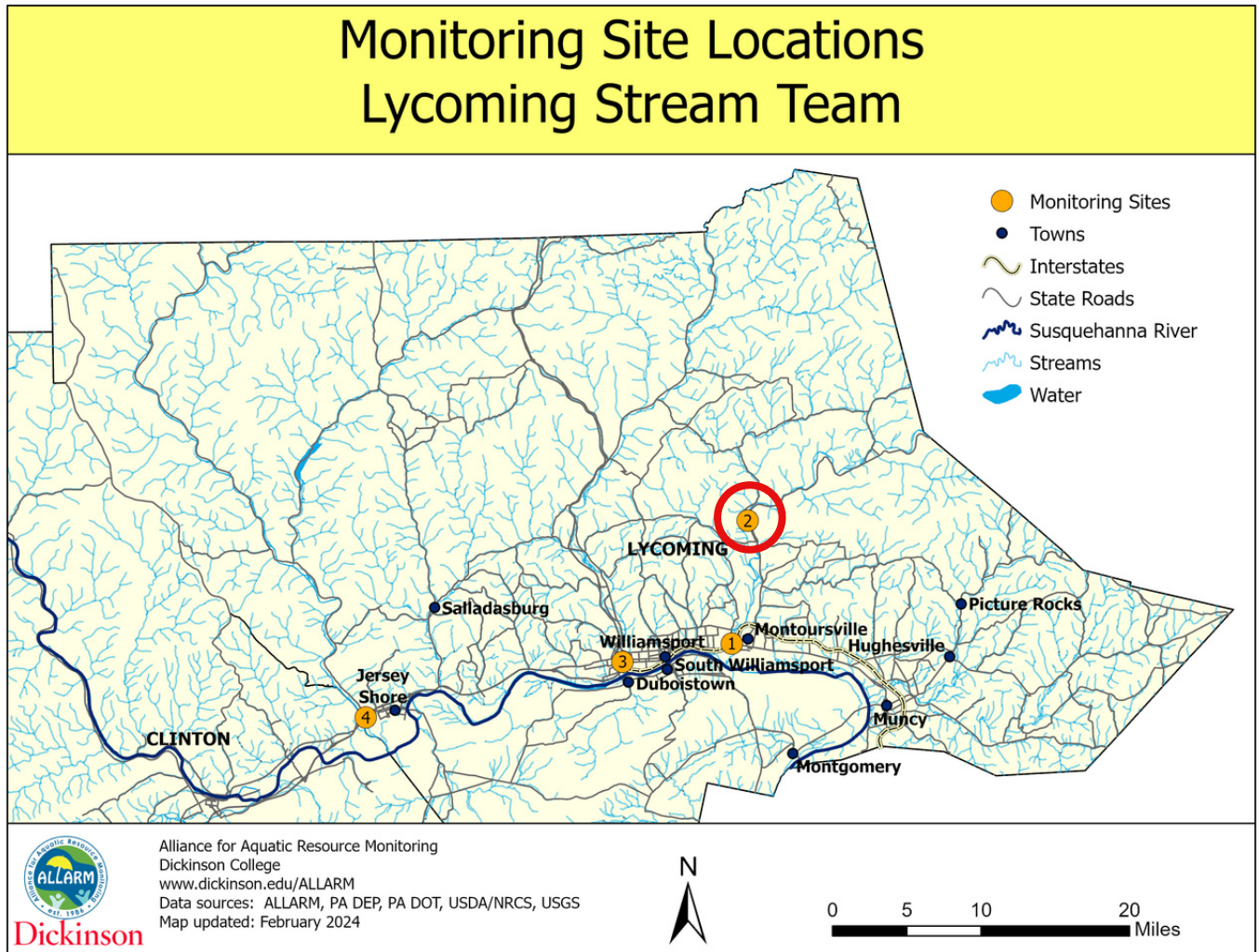
Raw Data and Summary Statistics

date	con	nitrate	ph	stage	clarity	watemp
Apr-22	68.2	0.5	7.25	2.6	50	10.9
May-22	59.6	0	7	1.7	55	16.9
Jun-22	69.1	0	7	2.3	55	19.3
Jul-22	89	0	7	1.1	55	25.5
Aug-22	91	0	7.75	1.4	55	24.5
Sep-22	67.9	0	8	2.2	55	22
Oct-22	61.3	0	7	1.4	55	11.3
Nov-22	49.8	0	7	2.8	55	4
Dec-22	53.7	0	7	2.1	55	2.7
Jan-23	42.3	0	7	3.1	55	4.7
Feb-23	53	0	7	2.3	55	5.9
Mar-23	57.6	0	7	3	55	3.8
Apr-23	64.2	0	7.5	1.3	55	18.9
May-23	61.6	0	7	1.7	55	14.7
Jun-23	64.5	0	7.5	1.4	55	20.5
Jul-23	54.6	8	8	2.9	55	22.8
Aug-23	35.7	0	6.5	1.7	5	18.6
Sep-23	55	0	7	1.6	55	15.2
Oct-23	60.4	0	8	2.1	55	12.8
Nov-23	64.5	0	8.5	1	55	8.4
Dec-23	54.3	0	8.5	2.7	55	5.4

Variable	Min	Max	Range	Average	Median
Conductivity	36	91	55	61	60
Nitrate-Nitrogen	0	8	8	0.4	0
pH	6.5	8.5	2	7.4	7
Stage	1	3.1	2.1	2	2.1
Water Clarity	5	55	50	52	55
Water Temp.	2.7	26	23	14	15

Loyalsock Creek- Upstream (LOYCRE8.66)

Monitor(s): Elizabeth Hittle, Stacey Barkauskas & girl scouts



Site information:

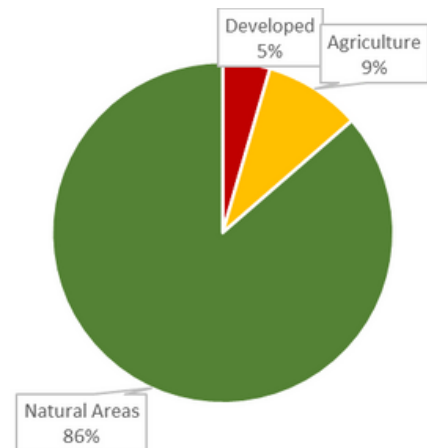
Drains: 435 mi²

Impaired: No

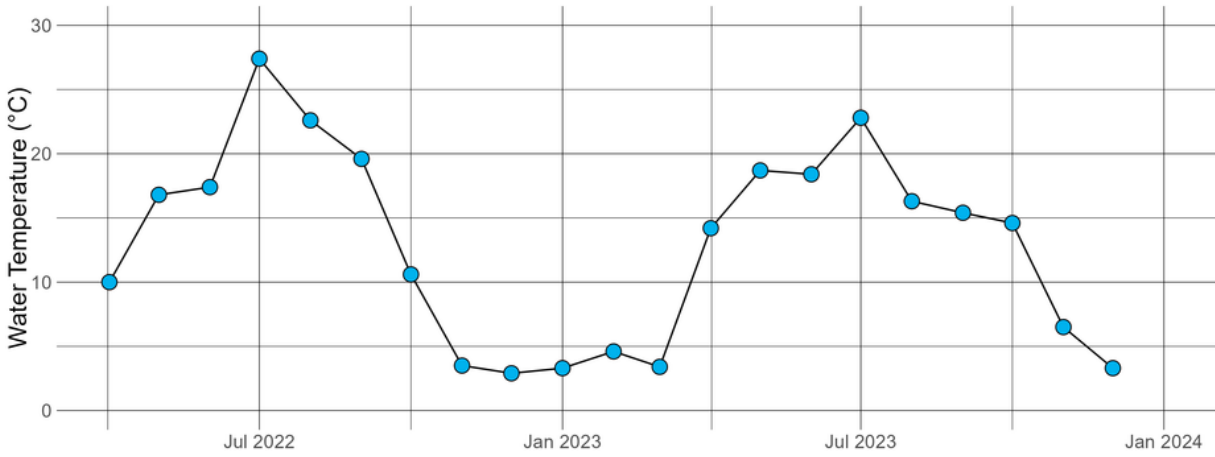
Designation: Trout stocking (TSF)

Geology: 100% Non-calcareous

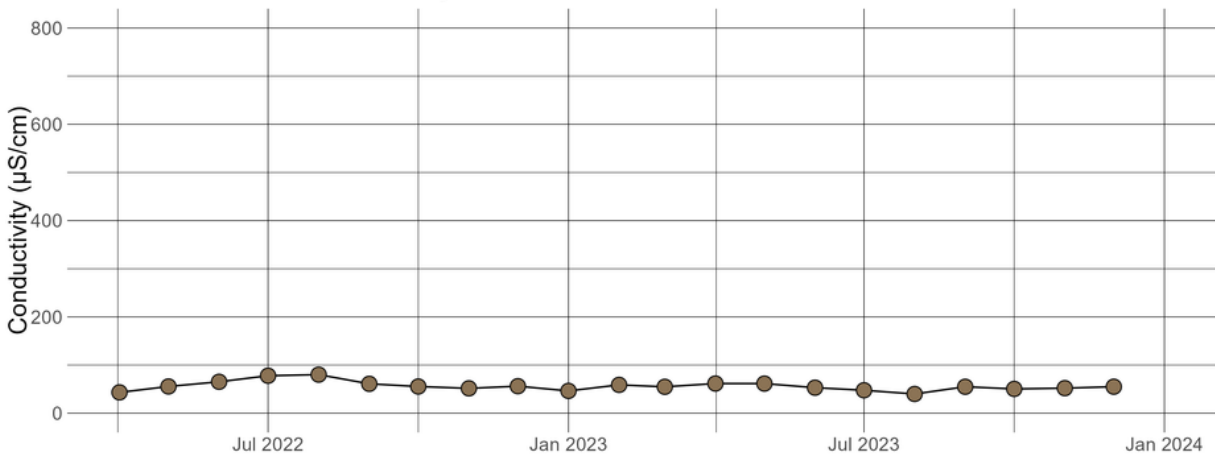
Land Use



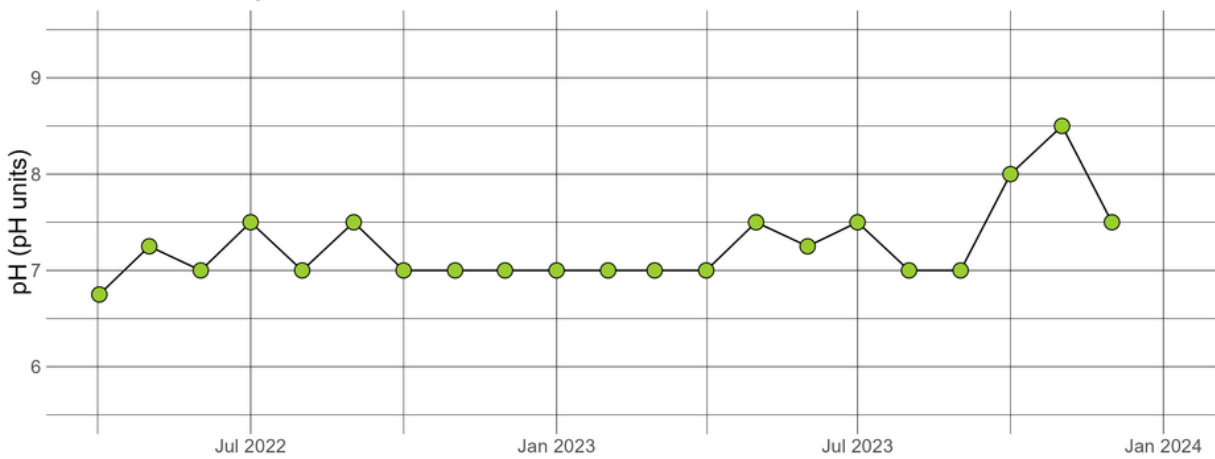
LOYCRE8.66 - Water Temperature



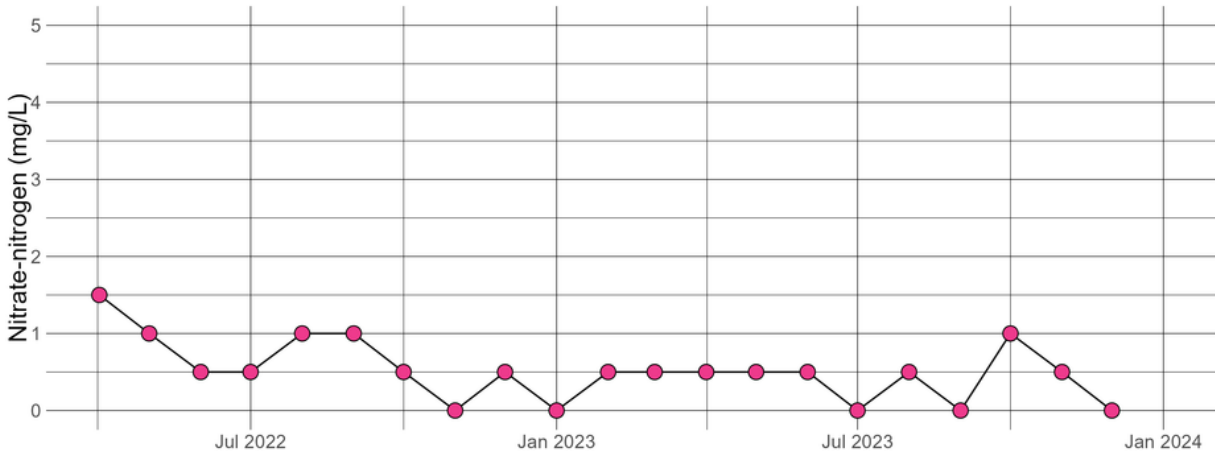
LOYCRE8.66 - Conductivity



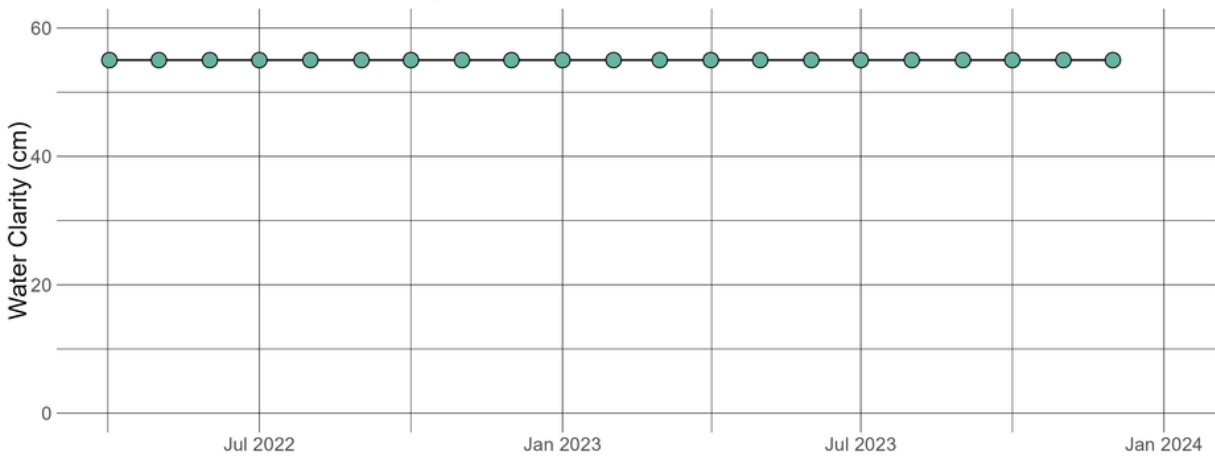
LOYCRE8.66 - pH



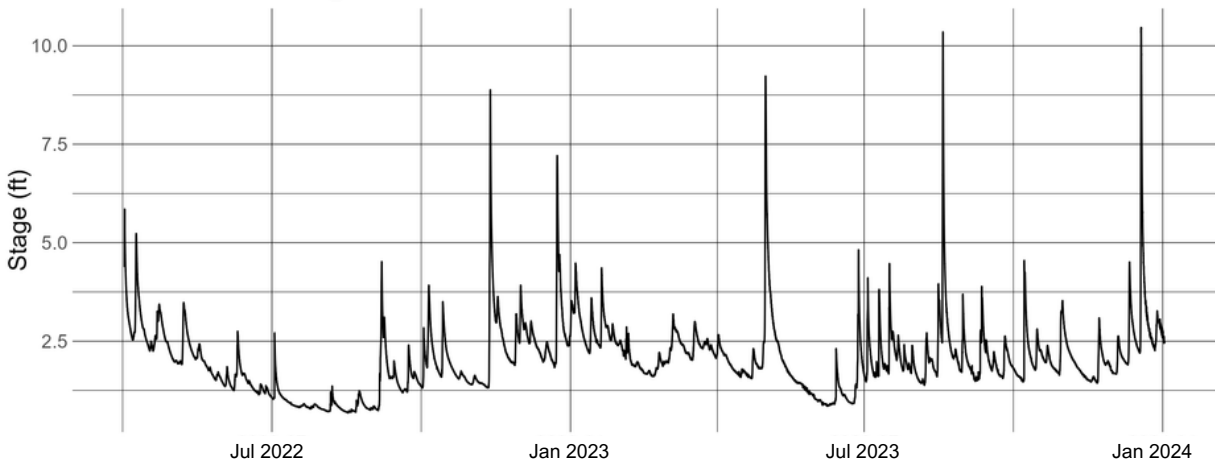
LOYCRE8.66 - Nitrate-nitrogen



LOYCRE8.66 - Water Clarity



LOYCRE8.66 - Stage*



*stage measurements from gage station

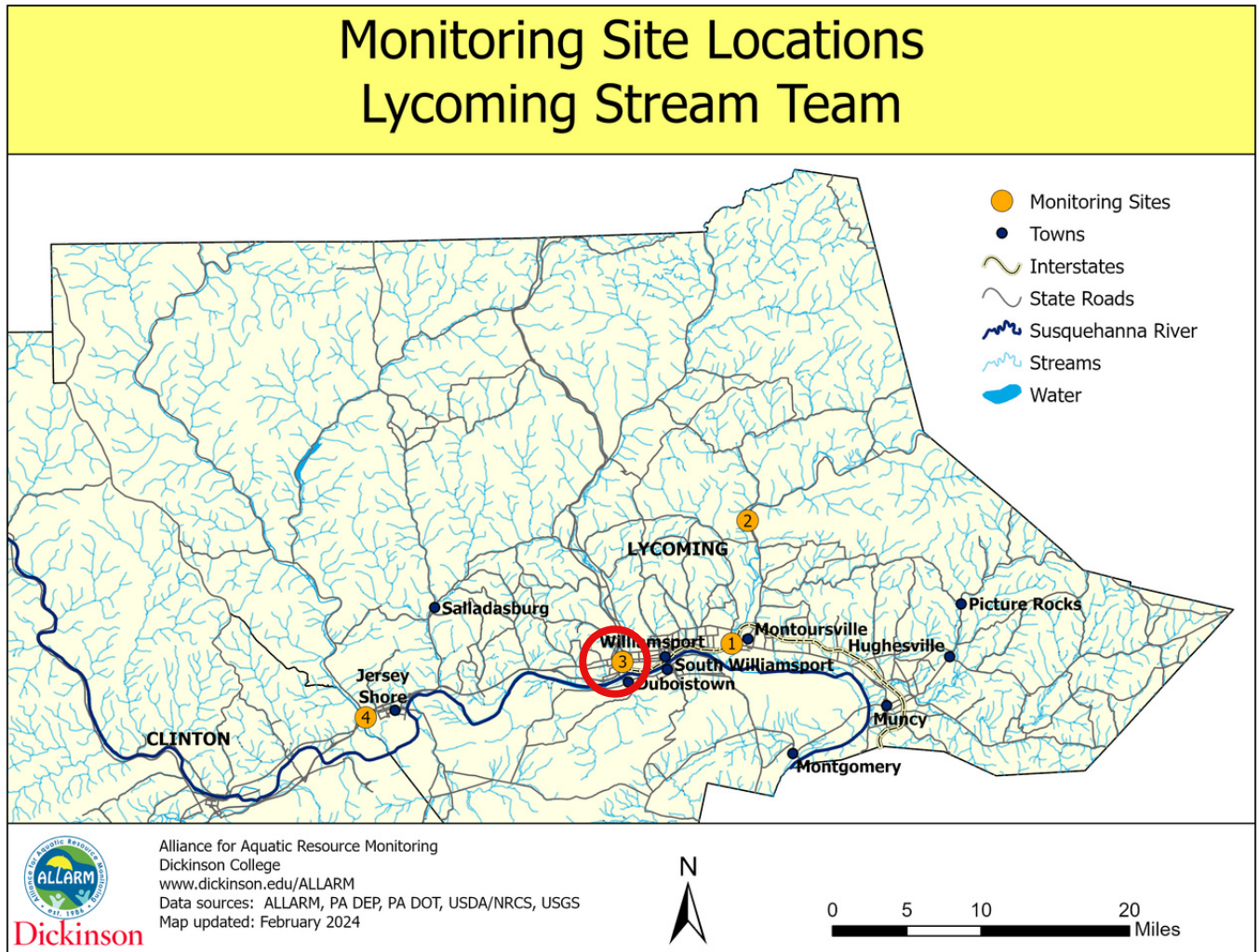
Raw Data and Summary Statistics

date	con	nitrate	ph	clarity	watemp
Apr-22	43.2	1.5	6.75	55	10
May-22	55.5	1	7.25	55	16.8
Jun-22	65.2	0.5	7	55	17.4
Jul-22	77.8	0.5	7.5	55	27.4
Aug-22	80.1	1	7	55	22.6
Sep-22	61	1	7.5	55	19.6
Oct-22	55.4	0.5	7	55	10.6
Nov-22	51.6	0	7	55	3.5
Dec-22	56.1	0.5	7	55	2.9
Jan-23	46.3	0	7	55	3.3
Feb-23	58.8	0.5	7	55	4.6
Mar-23	54.8	0.5	7	55	3.4
Apr-23	61.6	0.5	7	55	14.2
May-23	61.5	0.5	7.5	55	18.7
Jun-23	53	0.5	7.25	55	18.4
Jul-23	47.6	0	7.5	55	22.8
Aug-23	39.9	0.5	7	55	16.3
Sep-23	54.9	0	7	55	15.4
Oct-23	50.4	1	8	55	14.6
Nov-23	52	0.5	8.5	55	6.5
Dec-23	55	0	7.5	55	3.3

Variable	Min	Max	Range	Average	Median
Conductivity	40	80	40	56	55
Nitrate-Nitrogen	0	1.5	1.5	0.52	0.5
pH	6.8	8.5	1.8	7.2	7
Stage	0.68	10	9.8	2	1.9
Water Clarity	55	55	0	55	55
Water Temp.	2.9	27	24	13	15

Lycoming Creek (LYCCRE0.67)

Monitor(s): Marie Guerra & Tracy Cole (previously Nick Hessert)



Site information:

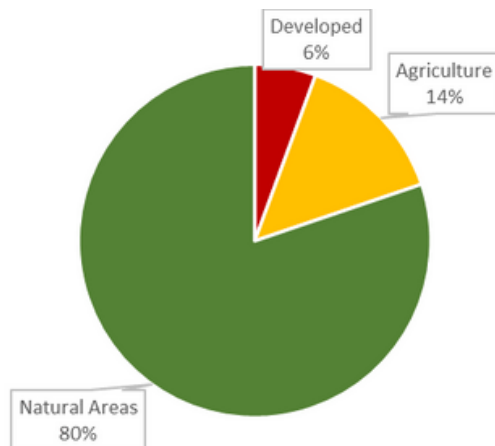
Drains: 271 mi²

Impaired: No

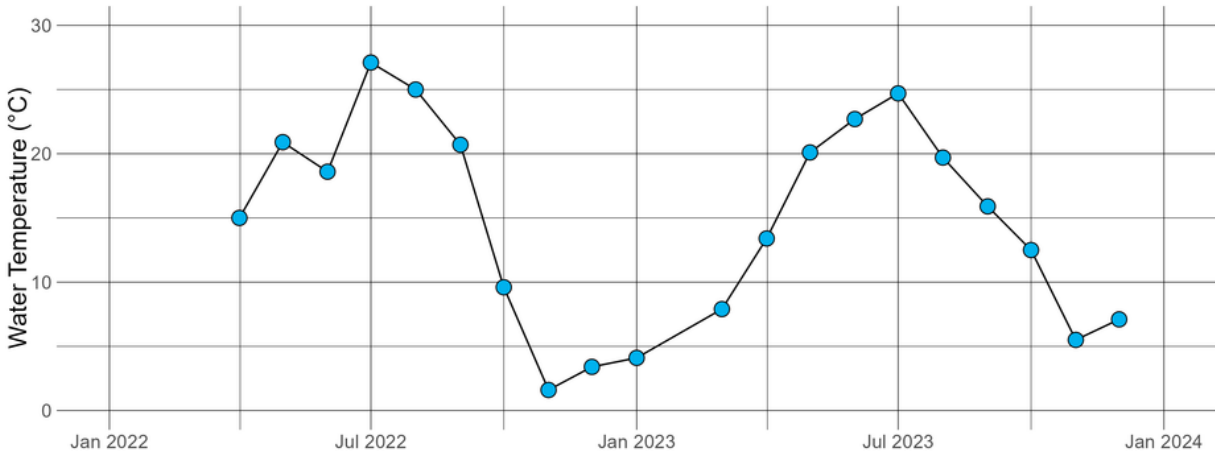
Designation: Warm water fishes (WWF)

Geology: 100% Non-calcareous

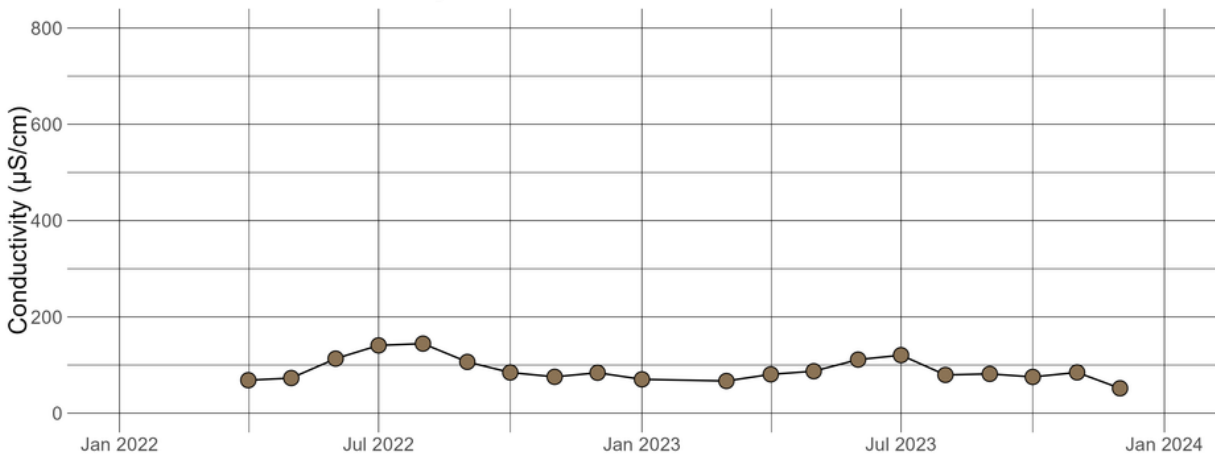
Land Use



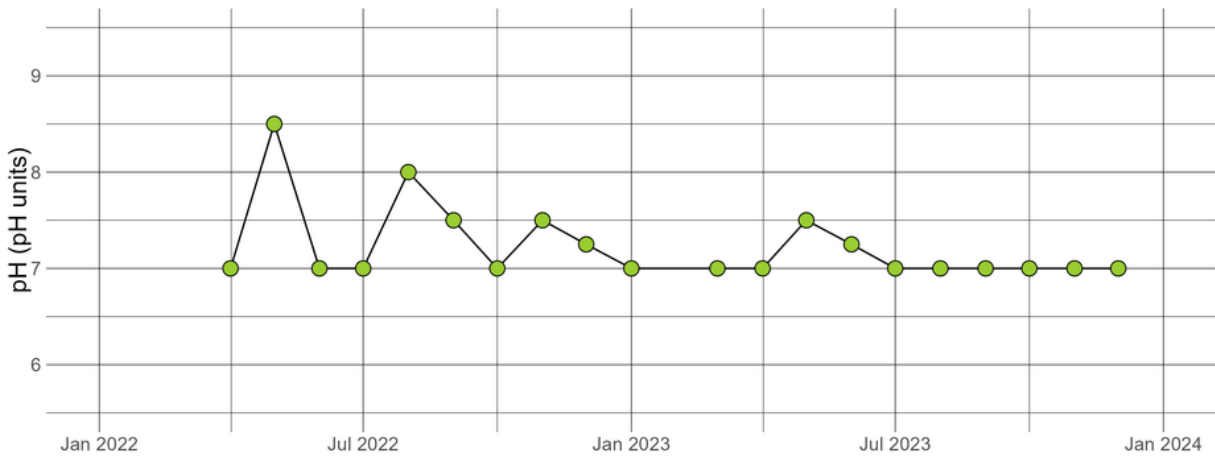
LYCCRE0.67 - Water Temperature



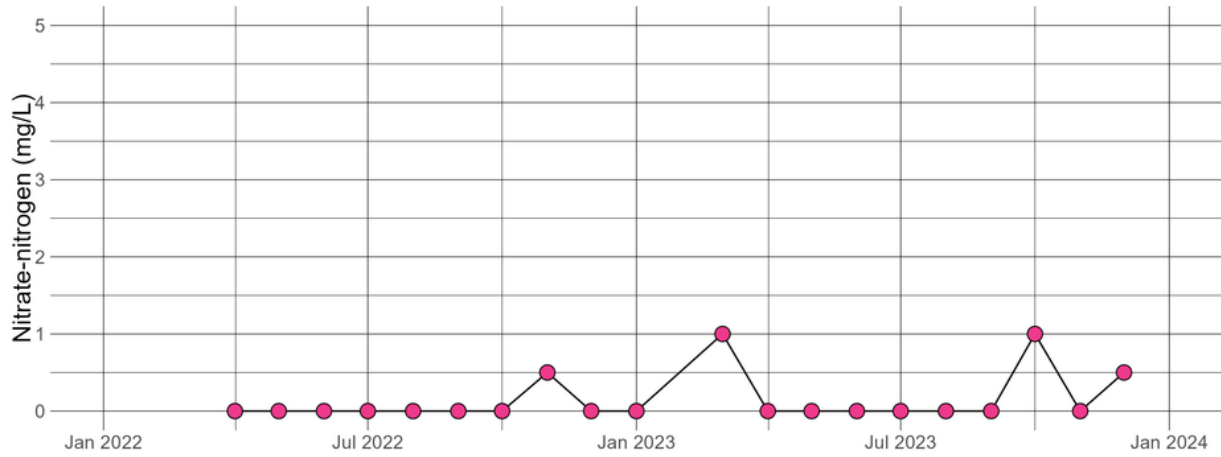
LYCCRE0.67 - Conductivity



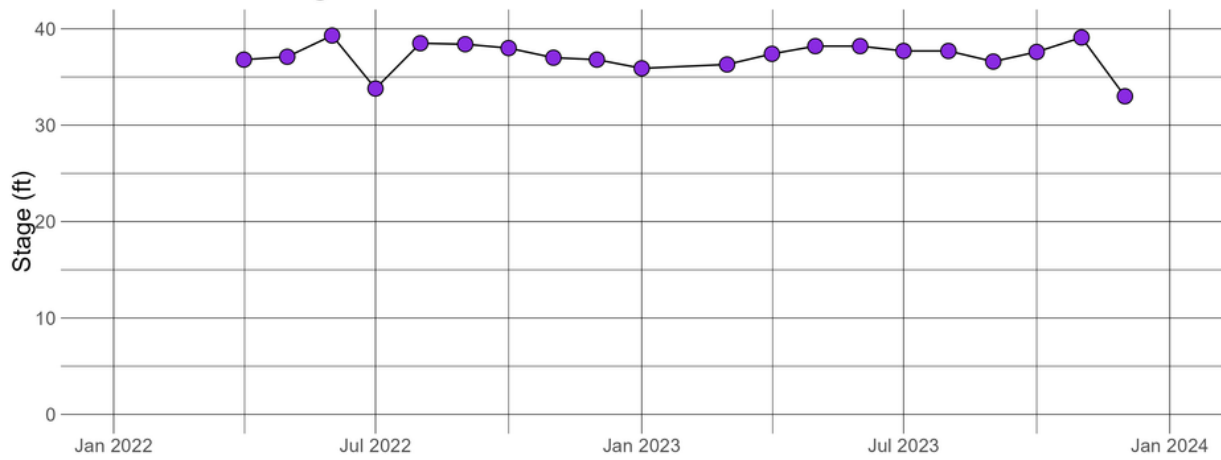
LYCCRE0.67 - pH



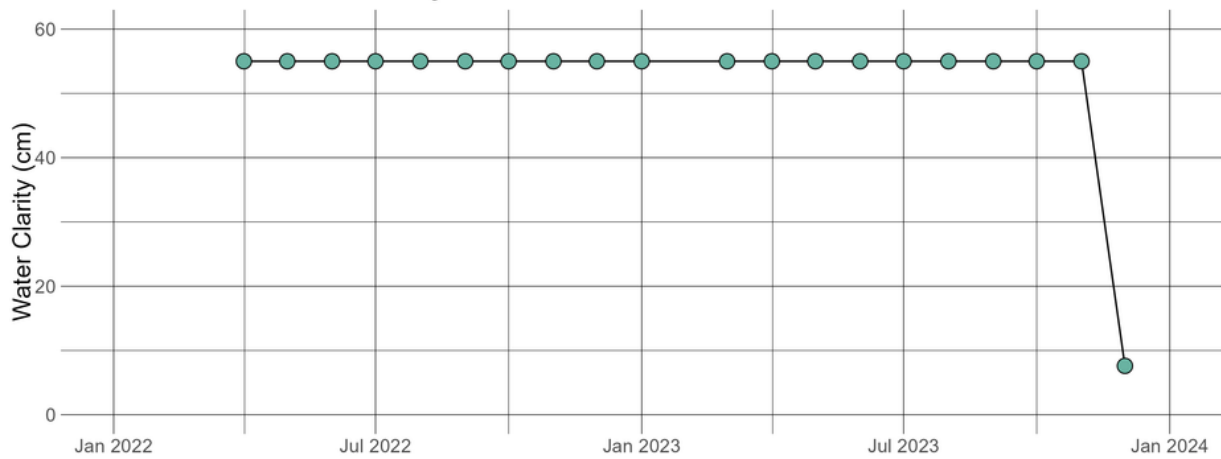
LYCCRE0.67 - Nitrate-nitrogen



LYCCRE0.67 - Stage



LYCCRE0.67 - Water Clarity



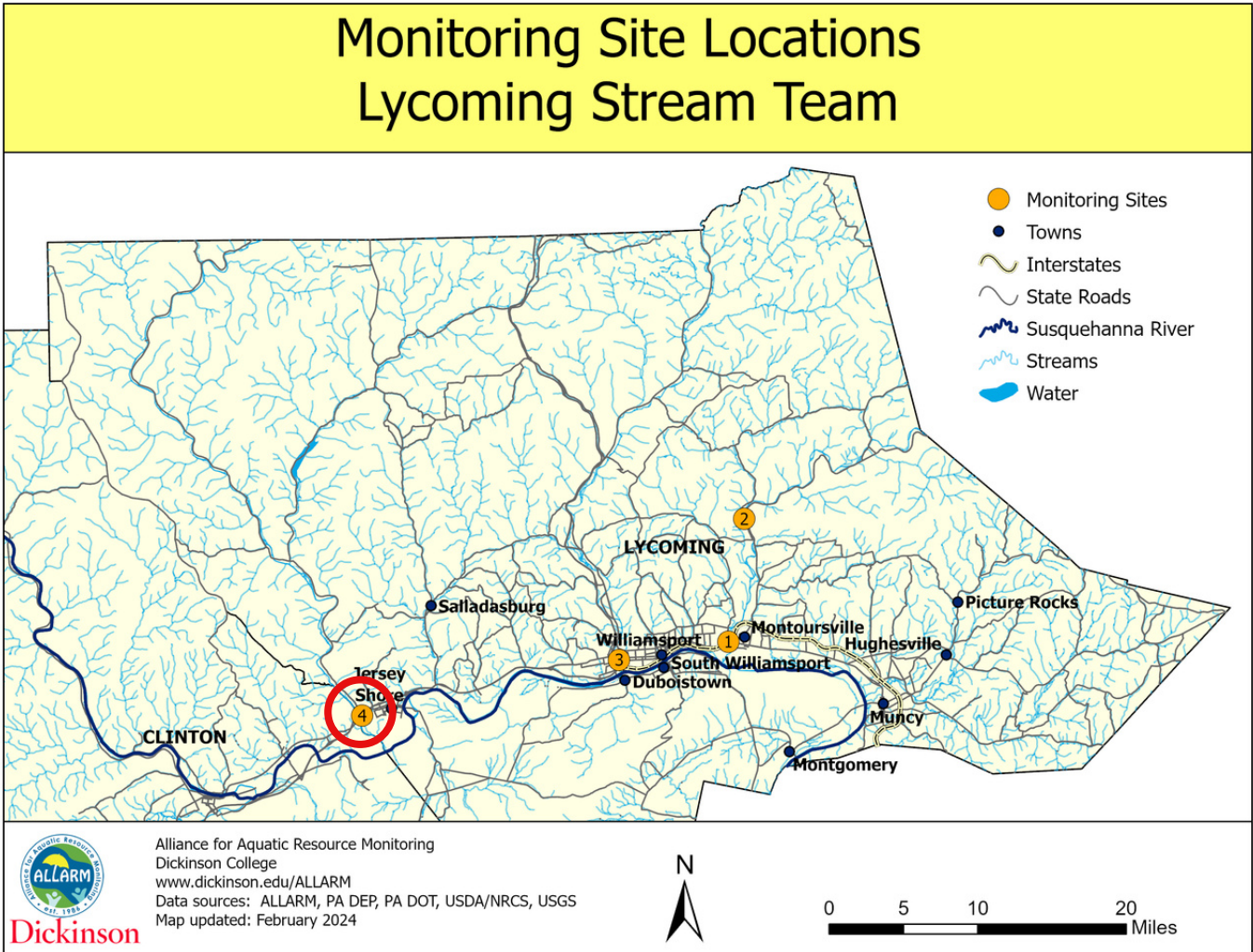
Raw Data and Summary Statistics

date	con	nitrate	ph	stage	clarity	watemp
Apr-22	68.5	0	7	36.8	55	15
May-22	73	0	8.5	37.1	55	20.9
Jun-22	113.3	0	7	39.3	55	18.6
Jul-22	140.8	0	7	33.8	55	27.1
Aug-22	144.5	0	8	38.5	55	25
Sep-22	106.5	0	7.5	38.4	55	20.7
Oct-22	84.5	0	7	38	55	9.6
Nov-22	75.5	0.5	7.5	37	55	1.6
Dec-22	84	0	7.25	36.8	55	3.4
Jan-23	70.3	0	7	35.9	55	4.1
Mar-23	66.9	1	7	36.3	55	7.9
Apr-23	80.7	0	7	37.4	55	13.4
May-23	87.2	0	7.5	38.2	55	20.1
Jun-23	111.3	0	7.25	38.2	55	22.7
Jul-23	120.5	0	7	37.7	55	24.7
Aug-23	79.5	0	7	37.7	55	19.7
Sep-23	81.6	0	7	36.6	55	15.9
Oct-23	75.3	1	7	37.6	55	12.5
Nov-23	84.7	0	7	39.1	55	5.5
Dec-23	51.7	0.5	7	33	7.6	7.1

Variable	Min	Max	Range	Average	Median
Conductivity	52	144	93	90	83
Nitrate-Nitrogen	0	1	1	0.15	0
pH	7	8.5	1.5	7.2	7
Stage	33	39	6.3	37	38
Water Clarity	7.6	55	47	53	55
Water Temp.	1.6	27	26	15	15

Pine Creek (PINCRE2.61)

Monitor(s): Inactive, (previously Steph Machmer & JSHS)



Site information:

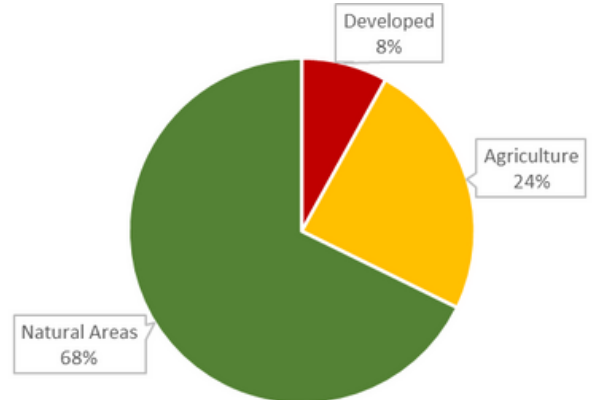
Drains: 202 mi²

Impaired: No

Designation: High-quality trout stocking (HQ-TSF)

Geology: 2% Calcareous, 98% Non-calcareous

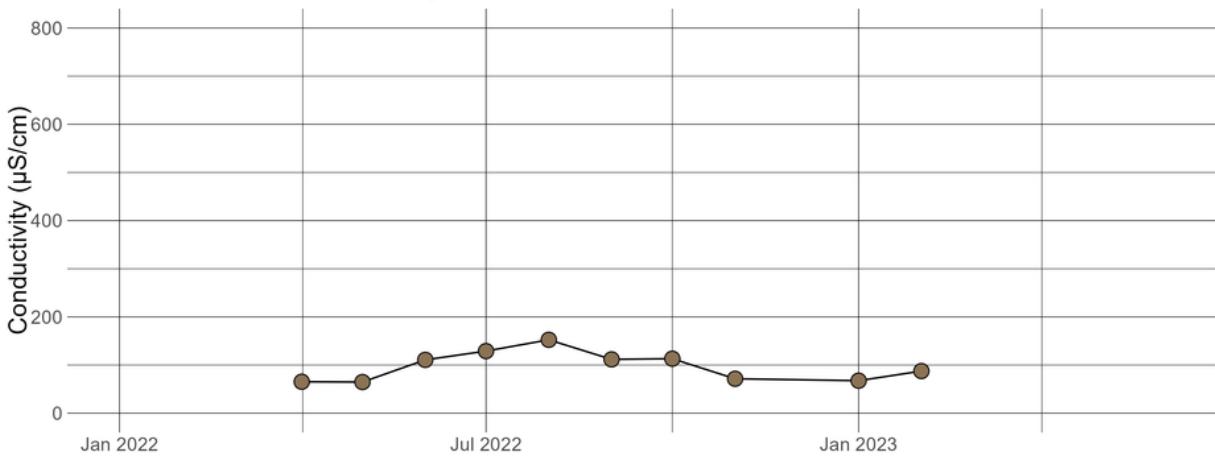
Land Use



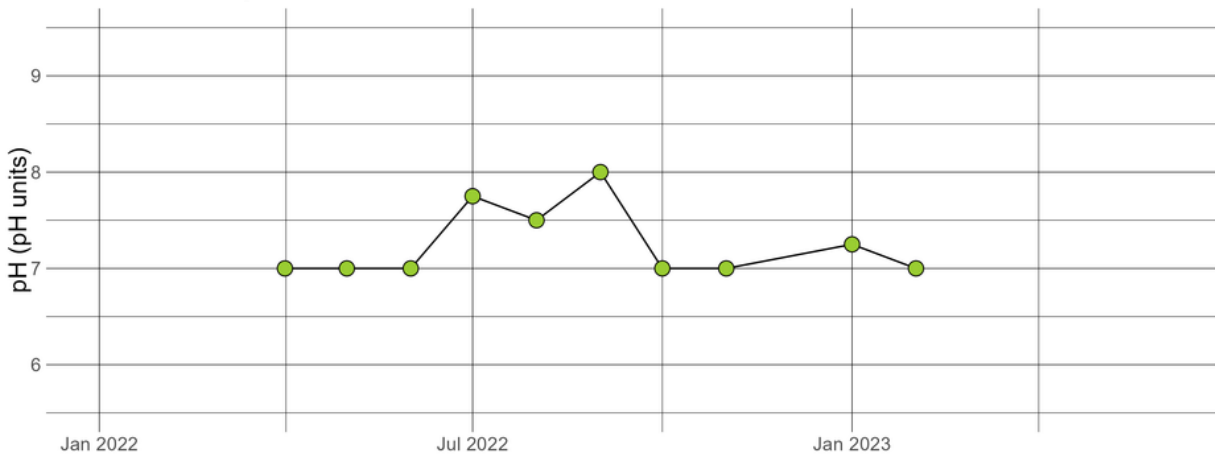
PINCRE2.61 - Water Temperature



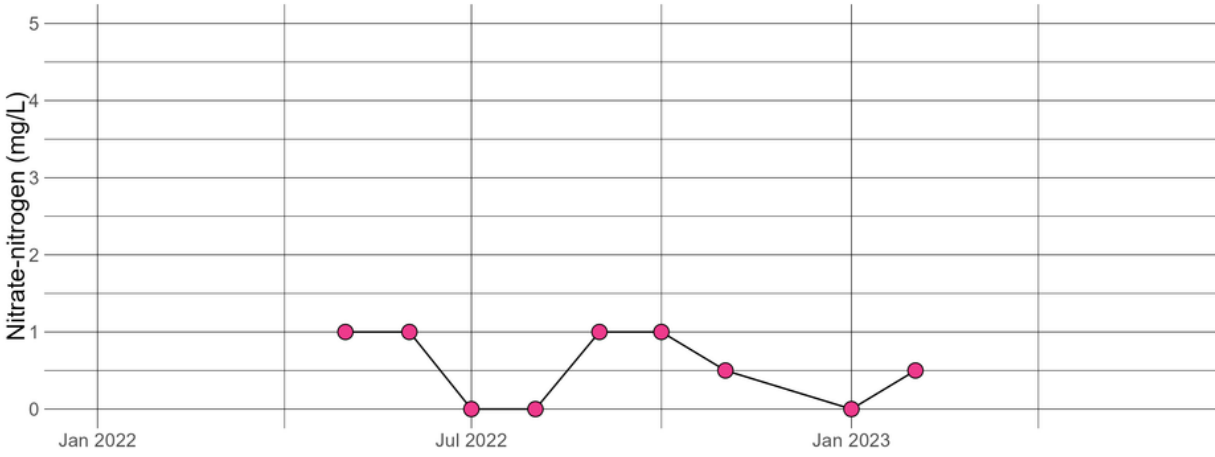
PINCRE2.61 - Conductivity



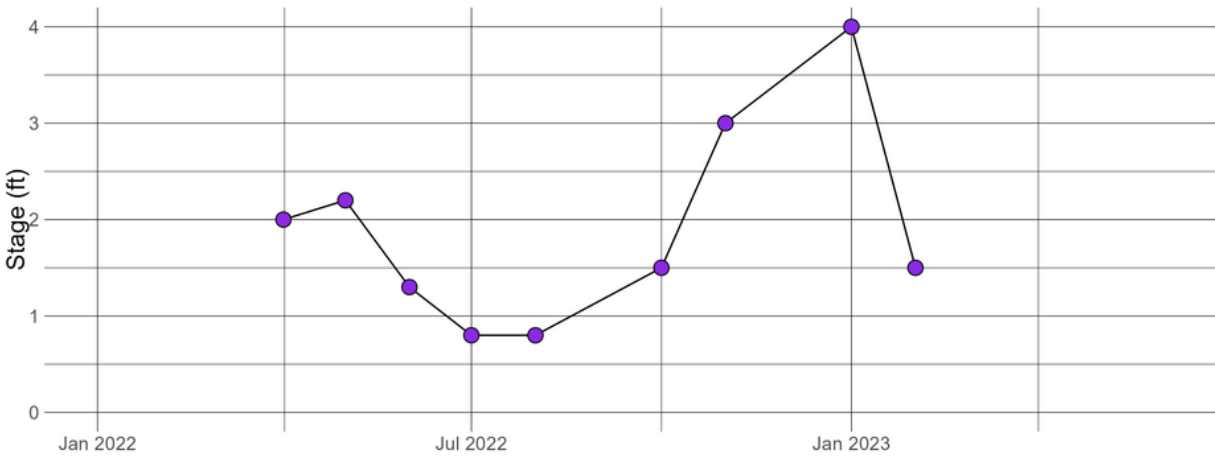
PINCRE2.61 - pH



PINCRE2.61 - Nitrate-nitrogen



PINCRE2.61 - Stage



PINCRE2.61 - Water Clarity



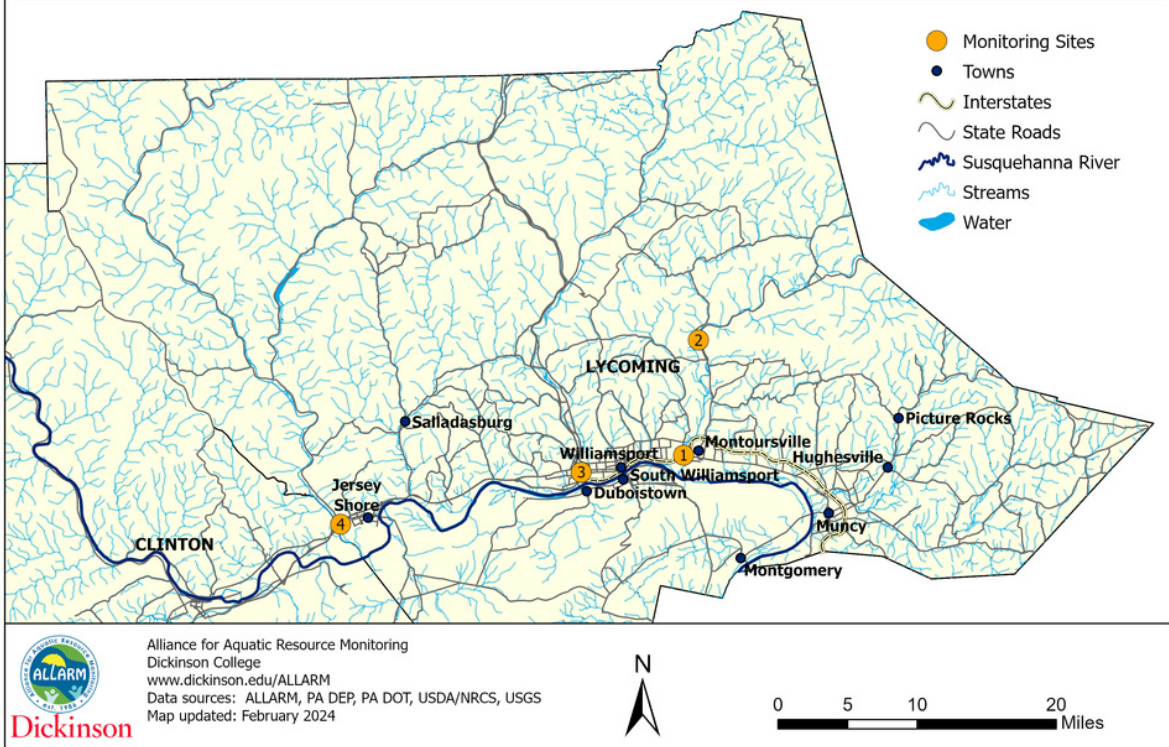
Raw Data and Summary Statistics

date	con	nitrate	ph	stage	clarity	watemp
Apr-22	65.3		7	2	55	12.9
May-22	64.7	1	7	2.2	55	19.1
Jun-22	110.8	1	7	1.3	55	24.5
Jul-22	129	0	7.75	0.8	51.6	30.5
Aug-22	152.4	0	7.5	0.8	55	29
Sep-22	111.8	1	8			
Oct-22	113.2	1	7	1.5	55	11.3
Nov-22	71.5	0.5	7	3	55	5.9
Jan-23	67.5	0	7.25	4	55	4.9
Feb-23	87.5	0.5	7	1.5	55	5.5

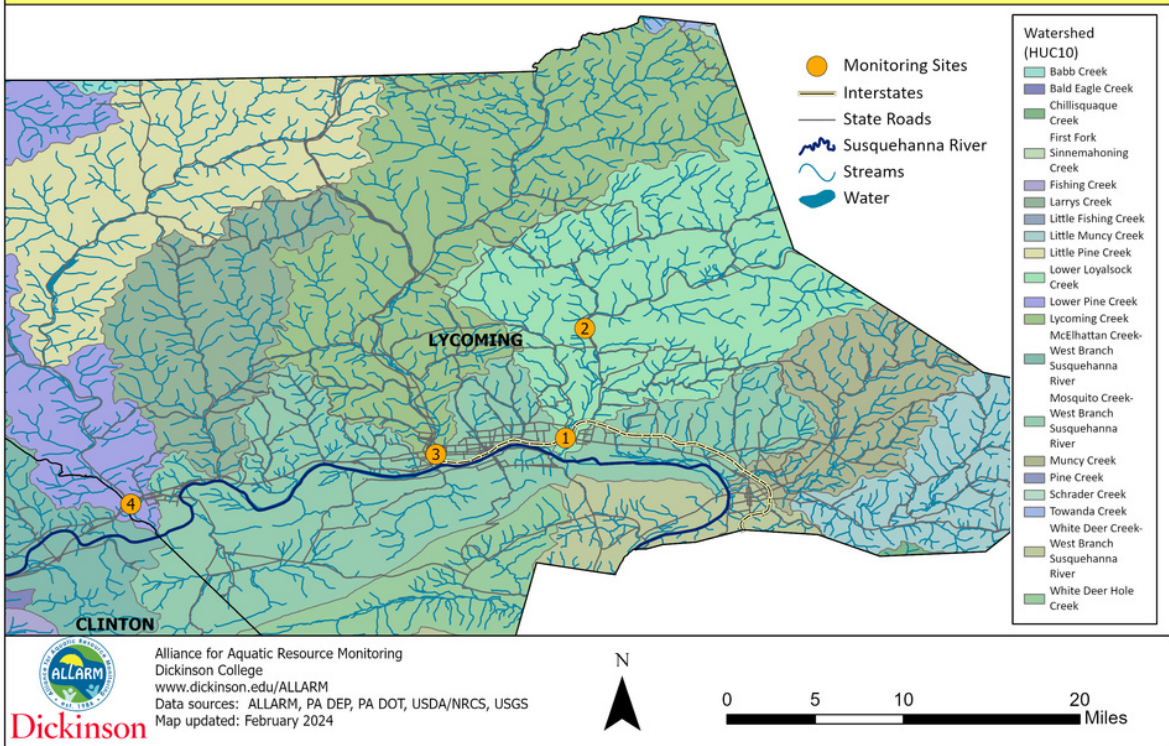
Variable	Min	Max	Range	Average	Median
Conductivity	65	152	88	97	99
Nitrate-Nitrogen	0	1	1	0.56	0.5
pH	7	8	1	7.2	7
Stage	0.8	4	3.2	1.9	1.5
Water Clarity	52	55	3.4	55	55
Water Temp.	4.9	30	26	16	13

Supplemental Maps

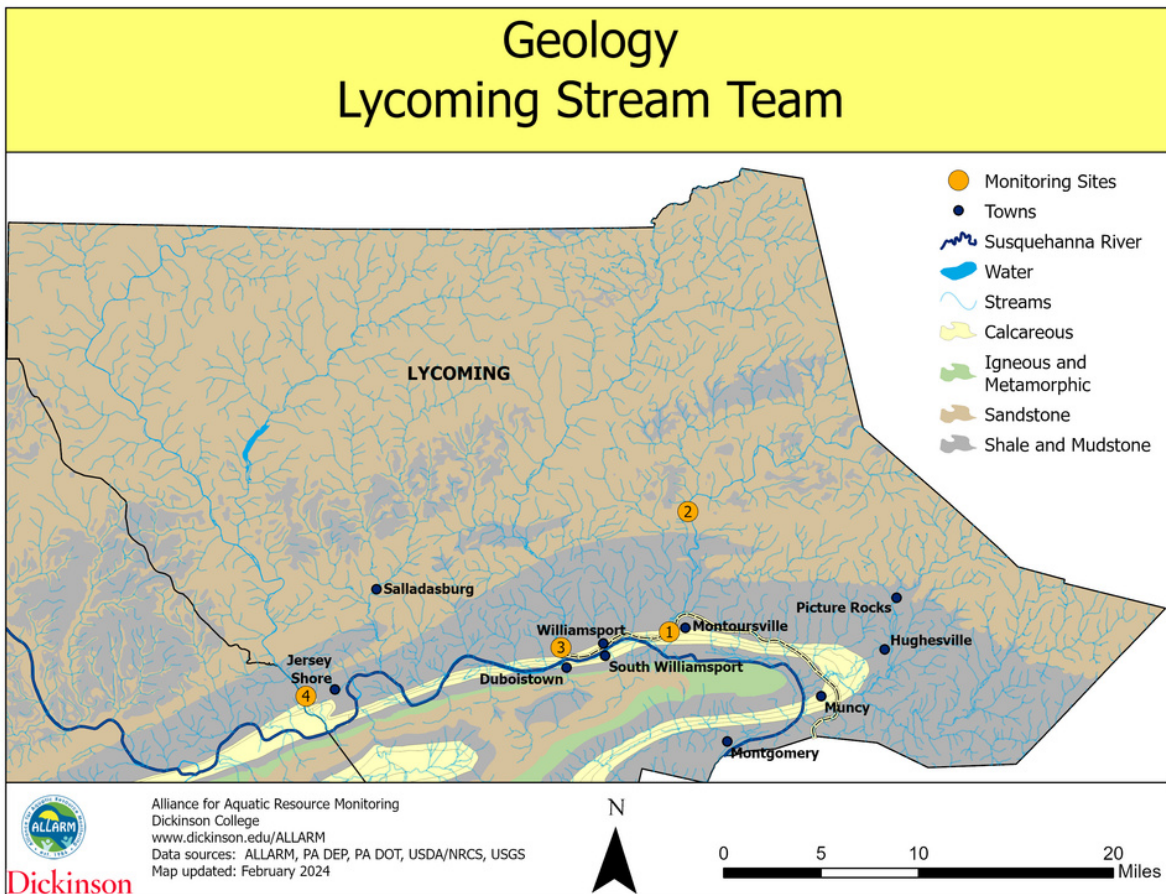
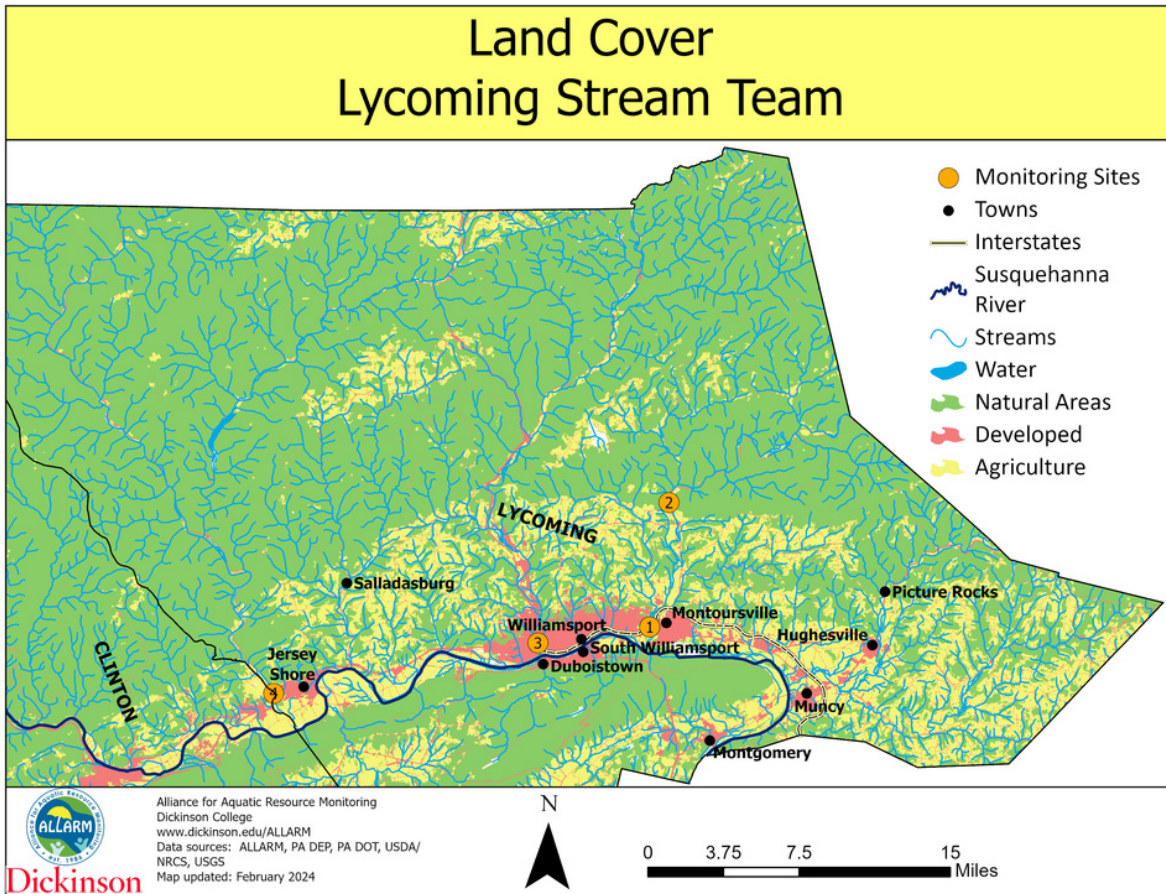
Monitoring Site Locations Lycoming Stream Team



Subwatersheds Lycoming Stream Team



Supplemental Maps



Supplemental Maps

